

Datasheet for ABIN7153904
anti-PGM2L1 antibody (AA 101-400)

3 Images

[Go to Product page](#)

Overview

Quantity:	100 µg
Target:	PGM2L1
Binding Specificity:	AA 101-400
Reactivity:	Human
Host:	Rabbit
Clonality:	Polyclonal
Conjugate:	This PGM2L1 antibody is un-conjugated
Application:	ELISA, Western Blotting (WB), Immunohistochemistry (IHC)

Product Details

Immunogen:	Recombinant Human Glucose 1,6-bisphosphate synthase protein (101-400AA)
Isotype:	IgG
Cross-Reactivity:	Human
Purification:	Antigen Affinity Purified

Target Details

Target:	PGM2L1
Alternative Name:	PGM2L1 (PGM2L1 Products)
Background:	Background: Glucose 1,6-bisphosphate synthase using 1,3-bisphosphoglycerate as a phosphate donor and a series of 1-phosphate sugars as acceptors, including glucose 1-

Target Details

phosphate, mannose 1-phosphate, ribose 1-phosphate and deoxyribose 1-phosphate. 5 or 6-phosphosugars are bad substrates, with the exception of glucose 6-phosphate. Also synthesizes ribose 1,5-bisphosphate. Has only low phosphopentomutase and phosphoglucomutase activities.

Aliases: PGM2L1 antibody, BM32A antibody, Glucose 1,6-bisphosphate synthase antibody, EC 2.7.1.106 antibody, PMMLP antibody, Phosphoglucomutase-2-like 1 antibody

UniProt: [Q6PCE3](#)

Application Details

Application Notes: Recommended dilution: WB:1:1000-1:5000, IHC:1:20-1:200,

Restrictions: For Research Use only

Handling

Format: Liquid

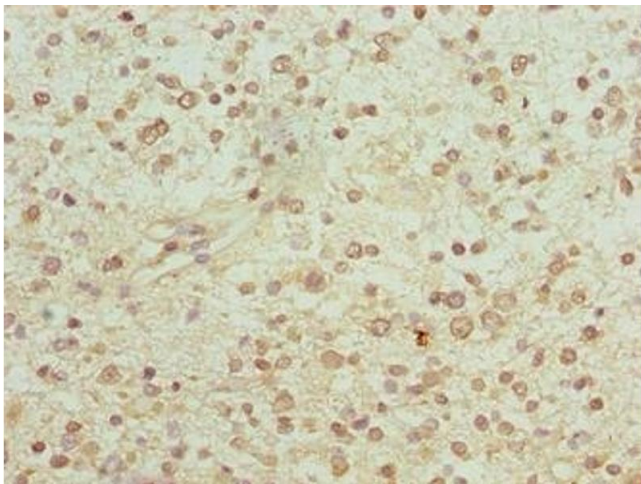
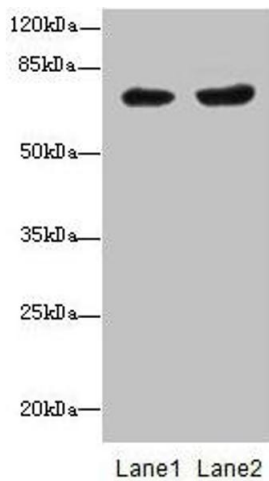
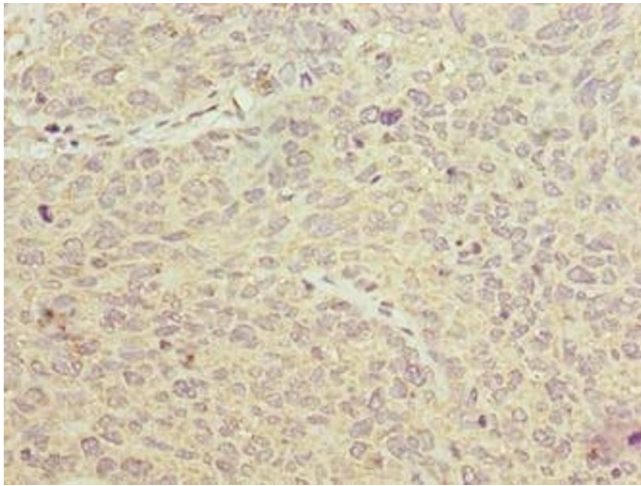
Buffer: Preservative: 0.03 % Proclin 300
Constituents: 50 % Glycerol, 0.01M PBS, PH 7.4

Preservative: ProClin

Precaution of Use: This product contains ProClin: a POISONOUS AND HAZARDOUS SUBSTANCE which should be handled by trained staff only.

Storage: -20 °C, -80 °C

Storage Comment: Upon receipt, store at -20°C or -80°C. Avoid repeated freeze.



Immunohistochemistry

Image 1. Immunohistochemistry of paraffin-embedded human cervical cancer using ABIN7153904 at dilution of 1:100

Western Blotting

Image 2. Western blot All lanes: PGM2L1 antibody at 0.8 μ g/mL Lane 1: HL60 whole cell lysate Lane 2: MCF-7 whole cell lysate Secondary Goat polyclonal to rabbit IgG at 1/10000 dilution Predicted band size: 71 kDa Observed band size: 71 kDa

Immunohistochemistry

Image 3. Immunohistochemistry of paraffin-embedded human glioma using ABIN7153904 at dilution of 1:100