



[Go to Product page](#)

Datasheet for ABIN7153920

## anti-SLC37A1 antibody (AA 245-302)

### 3 Images

#### Overview

Quantity:	100 µg
Target:	SLC37A1
Binding Specificity:	AA 245-302
Reactivity:	Human
Host:	Rabbit
Clonality:	Polyclonal
Conjugate:	This SLC37A1 antibody is un-conjugated
Application:	ELISA, Immunohistochemistry (IHC), Immunofluorescence (IF)

#### Product Details

Immunogen:	Recombinant Human Glucose-6-phosphate exchanger SLC37A1 protein (245-302AA)
Isotype:	IgG
Cross-Reactivity:	Human
Purification:	>95%, Protein G purified

#### Target Details

Target:	SLC37A1
Alternative Name:	SLC37A1 ( <a href="#">SLC37A1 Products</a> )
Background:	Background: Inorganic phosphate and glucose-6-phosphate antiporter. May transport cytoplasmic glucose-6-phosphate into the lumen of the endoplasmic reticulum and translocate

## Target Details

---

inorganic phosphate into the opposite direction. Independent of a luminal glucose-6-phosphatase. May not play a role in homeostatic regulation of blood glucose levels.

Aliases: G-3-P permease antibody, G-3-P transporter antibody, G3P permease antibody, G3P transporter antibody, G3PP antibody, GLPT\_HUMAN antibody, Glycerol-3-phosphate permease antibody, Glycerol-3-phosphate transporter antibody, SLC37A1 antibody, solute carrier family 37 (glycerol-3-phosphate transporter), member 1 antibody, Solute carrier family 37 member 1 antibody

---

UniProt: [P57057](#)

## Application Details

---

Application Notes: Recommended dilution: IHC:1:20-1:200, IF:1:50-1:200,

Restrictions: For Research Use only

## Handling

---

Format: Liquid

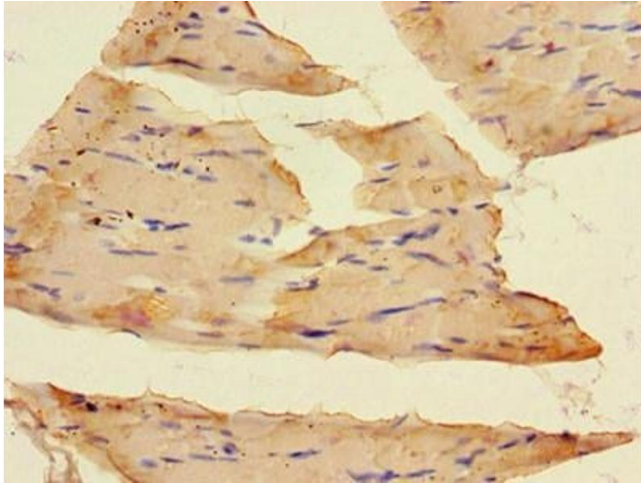
Buffer: Preservative: 0.03 % Proclin 300  
Constituents: 50 % Glycerol, 0.01M PBS, PH 7.4

Preservative: ProClin

Precaution of Use: This product contains ProClin: a POISONOUS AND HAZARDOUS SUBSTANCE which should be handled by trained staff only.

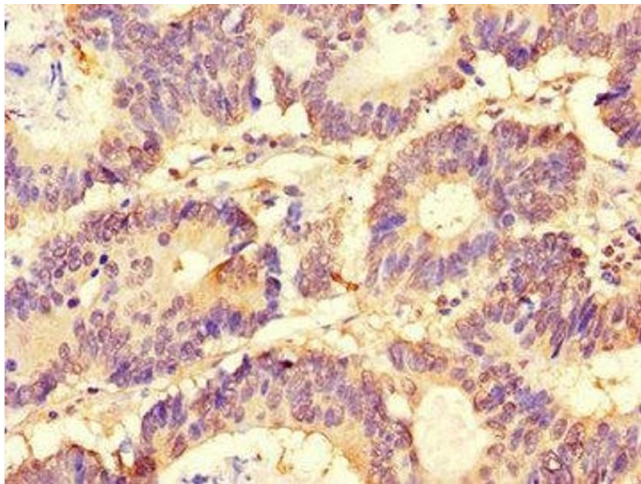
Storage: -20 °C,-80 °C

Storage Comment: Upon receipt, store at -20°C or -80°C. Avoid repeated freeze.



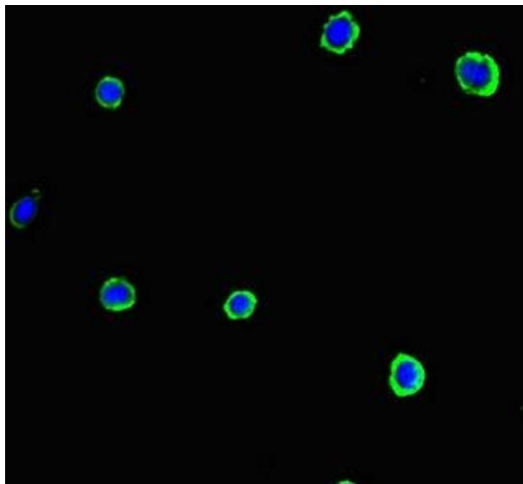
#### Immunohistochemistry

**Image 1.** Immunohistochemistry of paraffin-embedded human skeletal muscle tissue using ABIN7153920 at dilution of 1:100



#### Immunohistochemistry

**Image 2.** Immunohistochemistry of paraffin-embedded human colon cancer using ABIN7153920 at dilution of 1:100



#### Immunofluorescence

**Image 3.** Immunofluorescent analysis of MCF-7 cells using ABIN7153920 at dilution of 1:100 and Alexa Fluor 488-conjugated AffiniPure Goat Anti-Rabbit IgG(H+L)