

Datasheet for ABIN7153924
anti-SLC37A2 antibody (AA 46-84)

5 Images

[Go to Product page](#)

Overview

Quantity:	100 µg
Target:	SLC37A2
Binding Specificity:	AA 46-84
Reactivity:	Human
Host:	Rabbit
Clonality:	Polyclonal
Conjugate:	This SLC37A2 antibody is un-conjugated
Application:	ELISA, Western Blotting (WB), Immunohistochemistry (IHC), Immunofluorescence (IF)

Product Details

Immunogen:	Recombinant Human Glucose-6-phosphate exchanger SLC37A2 protein (46-84AA)
Isotype:	IgG
Cross-Reactivity:	Human, Mouse
Purification:	>95%, Protein G purified

Target Details

Target:	SLC37A2
Alternative Name:	SLC37A2 (SLC37A2 Products)
Background:	Background: Inorganic phosphate and glucose-6-phosphate antiporter. May transport cytoplasmic glucose-6-phosphate into the lumen of the endoplasmic reticulum and translocate

Target Details

inorganic phosphate into the opposite direction. Independent of a luminal glucose-6-phosphatase. May not play a role in homeostatic regulation of blood glucose levels.

Aliases: pp11662 antibody, FLJ00171 antibody, MGC71430 antibody, slc37a2 antibody, Solute carrier family 37 (glycerol 3 phosphate transporter), member 2 antibody, Solute carrier family 37 member 2 antibody, SPX2 antibody, SPX2_HUMAN antibody, Sugar phosphate exchanger 2 antibody

UniProt: [Q8TED4](#)

Application Details

Application Notes: Recommended dilution: WB:1:500-1:5000, IHC:1:20-1:200, IF:1:50-1:200,

Restrictions: For Research Use only

Handling

Format: Liquid

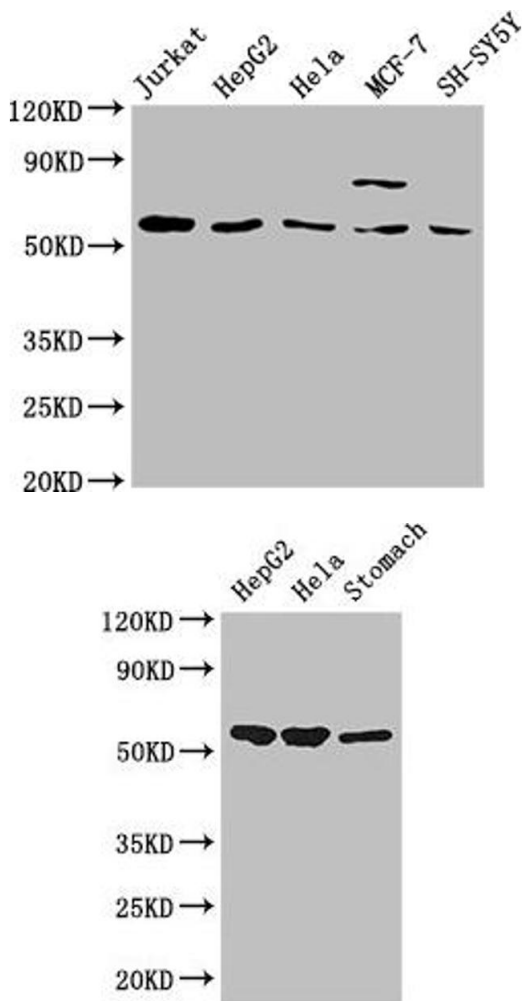
Buffer: Preservative: 0.03 % Proclin 300
Constituents: 50 % Glycerol, 0.01M PBS, PH 7.4

Preservative: ProClin

Precaution of Use: This product contains ProClin: a POISONOUS AND HAZARDOUS SUBSTANCE which should be handled by trained staff only.

Storage: -20 °C, -80 °C

Storage Comment: Upon receipt, store at -20°C or -80°C. Avoid repeated freeze.



Western Blotting

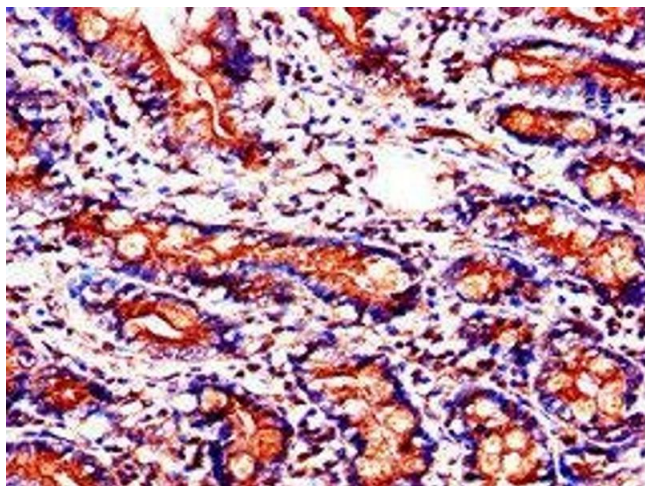
Image 1. Western Blot Positive WB detected in: Jurkat whole cell lysate, HepG2 whole cell lysate, HeLa whole cell lysate, MCF-7 whole cell lysate, SH-SY5Y whole cell lysate All lanes: SLC37A2 antibody at 1:2000 Secondary Goat polyclonal to rabbit IgG at 1/50000 dilution Predicted band size: 55, 43, 14 kDa Observed band size: 55 kDa

Western Blotting

Image 2. Western Blot Positive WB detected in: HepG2 whole cell lysate, HeLa whole cell lysate, Mouse stomach tissue All lanes: SLC37A2 antibody at 3 µg/mL Secondary Goat polyclonal to rabbit IgG at 1/50000 dilution Predicted band size: 55, 43, 14 kDa Observed band size: 55 kDa

Immunohistochemistry

Image 3. Immunohistochemistry of paraffin-embedded human small intestine tissue using ABIN7153924 at dilution of 1:100



Please check the [product details page](#) for more images. Overall 5 images are available for ABIN7153924.