

Datasheet for ABIN7153928
anti-GPI antibody (AA 2-554)[Go to Product page](#)

5 Images

Overview

Quantity:	100 µg
Target:	GPI
Binding Specificity:	AA 2-554
Reactivity:	Human
Host:	Rabbit
Clonality:	Polyclonal
Conjugate:	This GPI antibody is un-conjugated
Application:	Western Blotting (WB), ELISA, Immunohistochemistry (IHC), Immunofluorescence (IF), Immunoprecipitation (IP)

Product Details

Immunogen:	Recombinant Human Glucose-6-phosphate isomerase protein (2-554AA)
Isotype:	IgG
Cross-Reactivity:	Human, Mouse
Purification:	>95%, Protein G purified

Target Details

Target:	GPI
Alternative Name:	GPI (GPI Products)
Target Type:	Viral Protein

Target Details

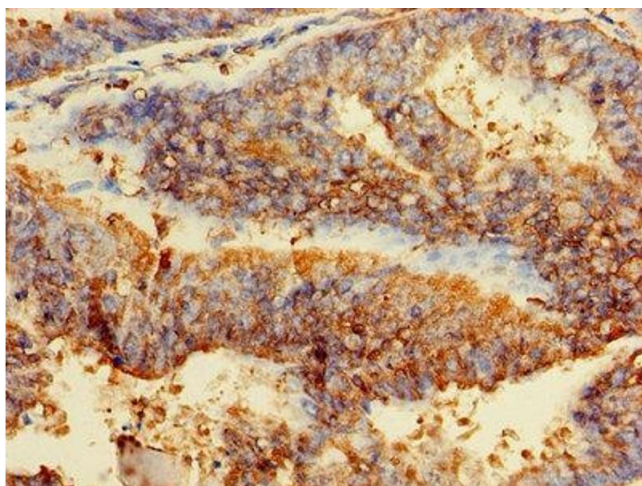
Background:	<p>Background: Besides its role as a glycolytic enzyme, mammalian GPI can function as a tumor-secreted cytokine and an angiogenic factor (AMF) that stimulates endothelial cell motility. GPI is also a neurotrophic factor (Neuroleukin) for spinal and sensory neurons.</p> <p>Aliases: AMF antibody, Autocrine motility factor antibody, Autocrine motility factor antibody, DKFZp686C13233 antibody, EC 5.3.1.9 antibody, G6PI_HUMAN antibody, Glucose phosphate isomerase antibody, Glucose-6-phosphate isomerase antibody, GNPI antibody, GPI antibody, Gpi1 antibody, Hexose monophosphate isomerase antibody, Hexosephosphate isomerase antibody, Neuroleukin antibody, NLK antibody, Oxoisomerase antibody, PGI antibody, PHI antibody, Phosphoglucose isomerase antibody, Phosphohexomutase antibody, Phosphohexose isomerase antibody, Phosphosaccharomutase antibody, SA 36 antibody, SA-36 antibody, SA36 antibody, Sperm antigen 36 antibody</p>
UniProt:	P06744

Application Details

Application Notes:	Recommended dilution: WB:1:500-1:5000, IHC:1:20-1:200, IF:1:50-1:200, IP:1:200-1:2000,
Restrictions:	For Research Use only

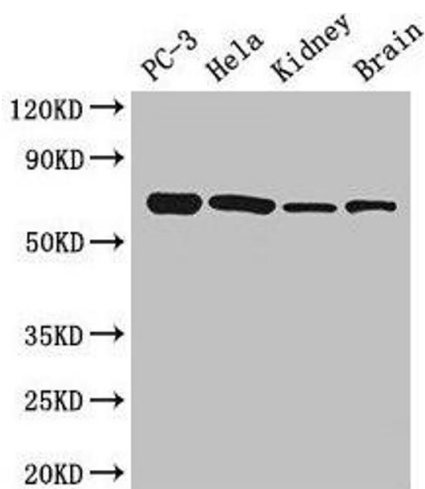
Handling

Format:	Liquid
Buffer:	Preservative: 0.03 % Proclin 300 Constituents: 50 % Glycerol, 0.01M PBS, PH 7.4
Preservative:	ProClin
Precaution of Use:	This product contains ProClin: a POISONOUS AND HAZARDOUS SUBSTANCE which should be handled by trained staff only.
Storage:	-20 °C,-80 °C
Storage Comment:	Upon receipt, store at -20°C or -80°C. Avoid repeated freeze.



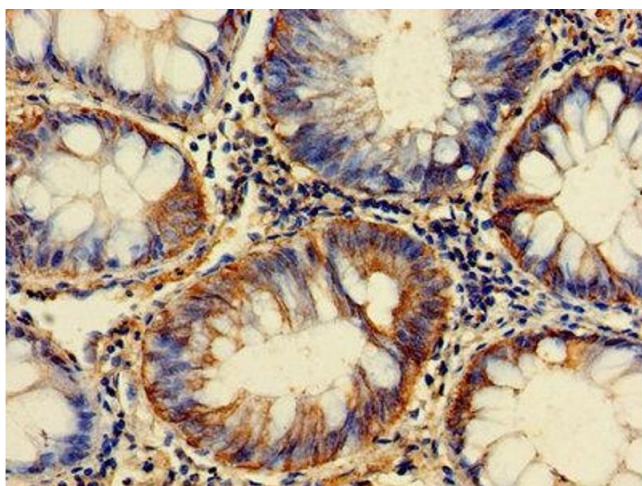
Immunohistochemistry

Image 1. Immunohistochemistry of paraffin-embedded human endometrial cancer using ABIN7153928 at dilution of 1:100



Western Blotting

Image 2. Western Blot Positive WB detected in: PC-3 whole cell lysate, Hela whole cell lysate, Mouse kidney tissue, Mouse brain tissue All lanes: GPI antibody at 2.7 µg/mL Secondary Goat polyclonal to rabbit IgG at 1/50000 dilution Predicted band size: 64, 65 kDa Observed band size: 64 kDa



Immunohistochemistry

Image 3. Immunohistochemistry of paraffin-embedded human colon cancer using ABIN7153928 at dilution of 1:100

Please check the [product details page](#) for more images. Overall 5 images are available for ABIN7153928.