



[Go to Product page](#)

Datasheet for ABIN7153936

## anti-GID8/C20orf11 antibody (AA 1-228)

### 1 Image

#### Overview

Quantity:	100 µg
Target:	GID8/C20orf11 (GID8)
Binding Specificity:	AA 1-228
Reactivity:	Human
Host:	Rabbit
Clonality:	Polyclonal
Conjugate:	This GID8/C20orf11 antibody is un-conjugated
Application:	ELISA, Immunohistochemistry (IHC)

#### Product Details

Immunogen:	Recombinant Human Glucose-induced degradation protein 8 homolog protein (1-228AA)
Isotype:	IgG
Cross-Reactivity:	Human
Purification:	>95%, Protein G purified

#### Target Details

Target:	GID8/C20orf11 (GID8)
Alternative Name:	GID8 ( <a href="#">GID8 Products</a> )
Background:	Background: cell junction, nucleoplasm Aliases: GID8 antibody, C20orf11 antibody, TWA1Glucose-induced degradation protein 8

## Target Details

homolog antibody, Two hybrid-associated protein 1 with RanBPM antibody, Twa1 antibody

UniProt: [Q9NWU2](#)

## Application Details

Application Notes: Recommended dilution: IHC:1:20-1:200,

Restrictions: For Research Use only

## Handling

Format: Liquid

Buffer: Preservative: 0.03 % Proclin 300  
Constituents: 50 % Glycerol, 0.01M PBS, PH 7.4

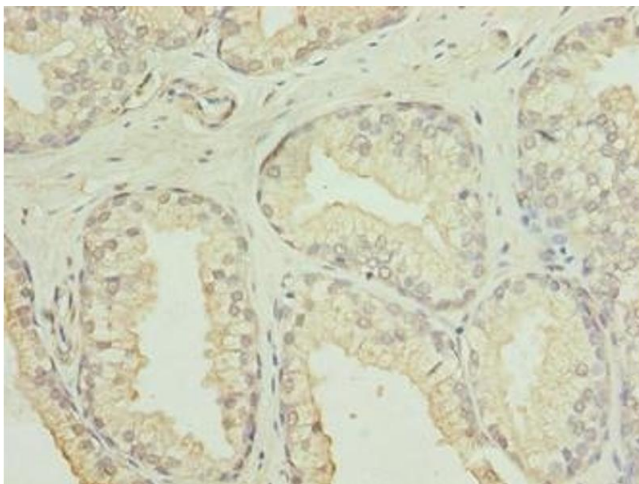
Preservative: ProClin

Precaution of Use: This product contains ProClin: a POISONOUS AND HAZARDOUS SUBSTANCE which should be handled by trained staff only.

Storage: -20 °C,-80 °C

Storage Comment: Upon receipt, store at -20°C or -80°C. Avoid repeated freeze.

## Images



### Immunohistochemistry

**Image 1.** Immunohistochemistry of paraffin-embedded human prostate cancer using ABIN7153936 at dilution of 1:100