

Datasheet for ABIN7153944
anti-GBA antibody (AA 215-343)

2 Images

[Go to Product page](#)

Overview

Quantity:	100 µg
Target:	GBA
Binding Specificity:	AA 215-343
Reactivity:	Human
Host:	Rabbit
Clonality:	Polyclonal
Conjugate:	This GBA antibody is un-conjugated
Application:	Western Blotting (WB), Immunohistochemistry (IHC), ELISA

Product Details

Immunogen:	Recombinant Human Glucosylceramidase protein (215-343AA)
Isotype:	IgG
Cross-Reactivity:	Human
Purification:	>95%, Protein G purified

Target Details

Target:	GBA
Alternative Name:	GBA (GBA Products)
Background:	Background: extracellular exosome, lysosomal lumen, lysosomal membrane, glucosylceramidase activity, receptor binding, cellular response to tumor necrosis factor,

Target Details

ceramide biosynthetic process, glucosylceramide catabolic process, glycosphingolipid metabolic process, negative regulation of inflammatory response

Aliases: Acid beta glucosidase antibody, Acid beta-glucosidase antibody, Alglucerase antibody, Beta glucocerebrosidase antibody, BETA GLUCOSIDASE, ACID antibody, Beta-glucocerebrosidase antibody, betaGC antibody, D glucosyl N acylsphingosine glucosylhydrolase antibody, D-glucosyl-N-acylsphingosine glucosylhydrolase antibody, EC 3.2.1.45 antibody, GBA antibody, Gba protein antibody, GBA1 antibody, GC antibody, GCase antibody, GCB antibody, GLCM_HUMAN antibody, GLUC antibody, Glucocerebrosidase (alt.) antibody, Glucocerebrosidase antibody, GLUCOCEREBROSIDASE PSEUDOGENE antibody, Glucosidase beta antibody, Glucosidase, beta, acid antibody, Glucosidase, beta, acid (includes glucosylceramidase) antibody, Glucosylceramidase antibody, Imiglucerase antibody, Lysosomal glucocerebrosidase antibody, OTTHUMP00000033992 antibody, OTTHUMP00000033993 antibody

UniProt: [P04062](#)

Pathways: [Cellular Glucan Metabolic Process](#)

Application Details

Application Notes: Recommended dilution: WB:1:500-1:5000, IHC:1:500-1:1000,

Restrictions: For Research Use only

Handling

Format: Liquid

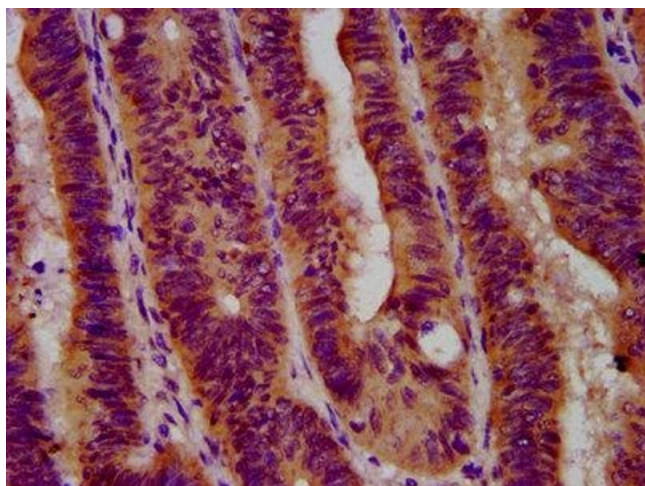
Buffer: Preservative: 0.03 % Proclin 300
Constituents: 50 % Glycerol, 0.01M PBS, pH 7.4

Preservative: ProClin

Precaution of Use: This product contains ProClin: a POISONOUS AND HAZARDOUS SUBSTANCE which should be handled by trained staff only.

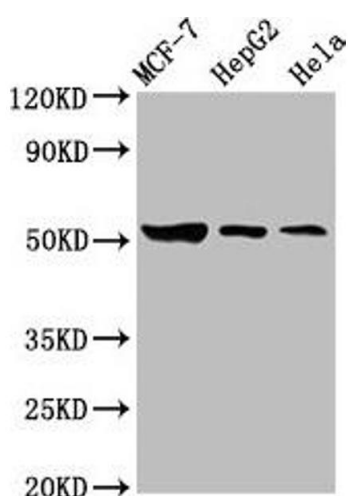
Storage: -20 °C, -80 °C

Storage Comment: Upon receipt, store at -20°C or -80°C. Avoid repeated freeze.



Immunohistochemistry

Image 1. IHC image of ABIN7153944 diluted at 1:600 and staining in paraffin-embedded human colon cancer performed on a Leica Bond™ system. After dewaxing and hydration, antigen retrieval was mediated by high pressure in a citrate buffer (pH 6.0). Section was blocked with 10% normal goat serum 30min at RT. Then primary antibody (1% BSA) was incubated at 4°C overnight. The primary is detected by a biotinylated secondary antibody and visualized using an HRP conjugated SP system.



Western Blotting

Image 2. Western Blot Positive WB detected in: MCF-7 whole cell lysate, HepG2 whole cell lysate, HeLa whole cell lysate All lanes: GBA antibody at 3.6 µg/mL Secondary Goat polyclonal to rabbit IgG at 1/50000 dilution Predicted band size: 60, 58, 30, 51, 55 kDa Observed band size: 51 kDa