

Datasheet for ABIN7153998
anti-GCLC antibody (Catalytic Subunit)



[Go to Product page](#)

1 Image

Overview

Quantity:	100 µg
Target:	GCLC
Binding Specificity:	AA 78-236, Catalytic Subunit
Reactivity:	Human
Host:	Rabbit
Clonality:	Polyclonal
Conjugate:	This GCLC antibody is un-conjugated
Application:	Immunohistochemistry (IHC), ELISA

Product Details

Immunogen:	Recombinant Human Glutamate–cysteine ligase catalytic subunit protein (78-236AA)
Isotype:	IgG
Cross-Reactivity:	Human
Purification:	>95%, Protein G purified

Target Details

Target:	GCLC
Alternative Name:	GCLC (GCLC Products)
Background:	Background: cytosol, glutamate-cysteine ligase complex, ADP binding, coenzyme binding, glutamate binding, glutamate-cysteine ligase activity, magnesium ion binding, cell redox

Target Details

homeostasis, cysteine metabolic process, glutamate metabolic process

Aliases: EC 6.3.2.2 antibody, Gamma ECS antibody, Gamma glutamylcysteine synthetase antibody, Gamma-ECS antibody, Gamma-glutamylcysteine synthetase antibody, GCL antibody, Gclc antibody, GCS antibody, GCS heavy chain antibody, GLCL antibody, GLCLC antibody, Glutamate cysteine ligase catalytic subunit antibody, Glutamate--cysteine ligase catalytic subunit antibody, GSH1_HUMAN antibody

UniProt: [P48506](#)

Pathways: [Cell RedoxHomeostasis](#)

Application Details

Application Notes: Recommended dilution: IHC:1:20-1:200,

Restrictions: For Research Use only

Handling

Format: Liquid

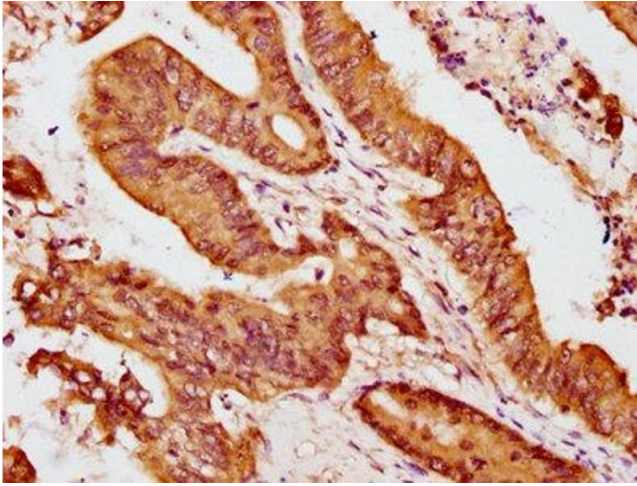
Buffer: Preservative: 0.03 % Proclin 300
Constituents: 50 % Glycerol, 0.01M PBS, pH 7.4

Preservative: ProClin

Precaution of Use: This product contains ProClin: a POISONOUS AND HAZARDOUS SUBSTANCE which should be handled by trained staff only.

Storage: -20 °C,-80 °C

Storage Comment: Upon receipt, store at -20°C or -80°C. Avoid repeated freeze.



Immunohistochemistry

Image 1. IHC image of ABIN7153998 diluted at 1:100 and staining in paraffin-embedded human colon cancer performed on a Leica Bond™ system. After dewaxing and hydration, antigen retrieval was mediated by high pressure in a citrate buffer (pH 6.0). Section was blocked with 10 % normal goat serum 30 min at RT. Then primary antibody (1 % BSA) was incubated at 4 °C overnight. The primary is detected by a biotinylated secondary antibody and visualized using an HRP conjugated SP system.