

Datasheet for ABIN7154041
anti-PET112L antibody (AA 301-383)[Go to Product page](#)

3 Images

Overview

Quantity:	100 µg
Target:	PET112L (PET112)
Binding Specificity:	AA 301-383
Reactivity:	Human
Host:	Rabbit
Clonality:	Polyclonal
Conjugate:	This PET112L antibody is un-conjugated
Application:	Western Blotting (WB), ELISA, Immunofluorescence (IF), Immunohistochemistry (IHC)

Product Details

Immunogen:	Recombinant Human Glutamyl-tRNA(Gln) amidotransferase subunit B, mitochondrial protein (301-383AA)
Isotype:	IgG
Cross-Reactivity:	Human
Purification:	>95%, Protein G purified

Target Details

Target:	PET112L (PET112)
Alternative Name:	GATB (PET112 Products)
Background:	Background: Allows the formation of correctly charged Gln-tRNA(Gln) through the

Target Details

transamidation of misacylated Glu-tRNA(Gln) in the mitochondria. The reaction takes place in the presence of glutamine and ATP through an activated gamma-phospho-Glu-tRNA(Gln).

Aliases: GATB antibody, PET112 antibody, PET112L antibody, HSPC199Glutamyl-tRNA(Gln) amidotransferase subunit B antibody, mitochondrial antibody, Glu-AdT subunit B antibody, EC 6.3.5.- antibody, Cytochrome c oxidase assembly factor PET112 homolog antibody

UniProt: [O75879](#)

Application Details

Application Notes: Recommended dilution: WB:1:500-1:5000, IHC:1:200-1:500, IF:1:50-1:200,

Restrictions: For Research Use only

Handling

Format: Liquid

Buffer: Preservative: 0.03 % Proclin 300
Constituents: 50 % Glycerol, 0.01M PBS, pH 7.4

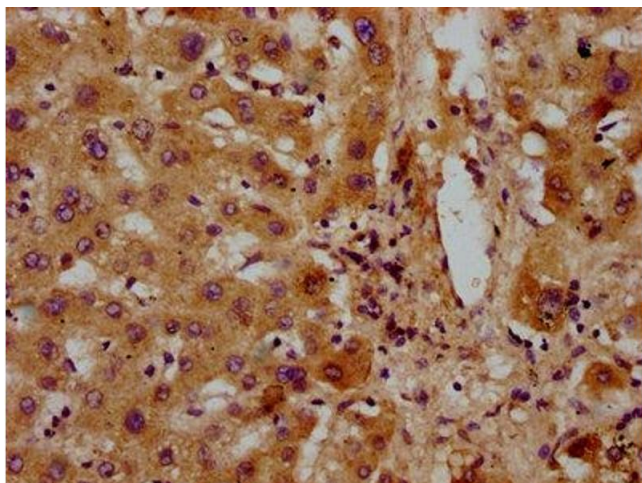
Preservative: ProClin

Precaution of Use: This product contains ProClin: a POISONOUS AND HAZARDOUS SUBSTANCE which should be handled by trained staff only.

Storage: -20 °C,-80 °C

Storage Comment: Upon receipt, store at -20°C or -80°C. Avoid repeated freeze.

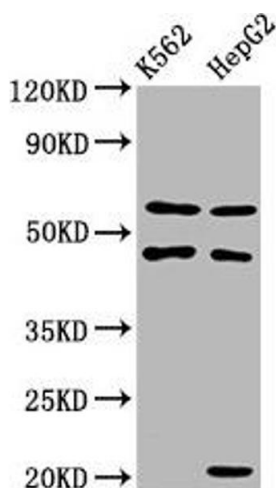
Images



Immunohistochemistry

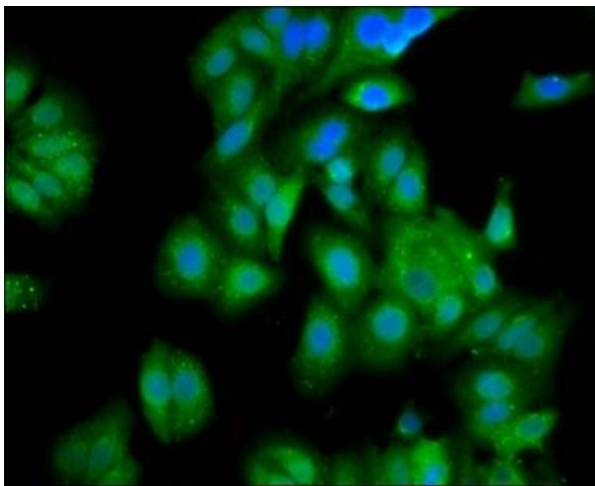
Image 1. IHC image of ABIN7154041 diluted at 1:300 and staining in paraffin-embedded human liver tissue performed on a Leica Bond™ system. After dewaxing and hydration, antigen retrieval was mediated by high pressure in a citrate buffer (pH 6.0). Section was blocked with 10% normal goat serum 30min at RT. Then primary antibody (1% BSA) was incubated at 4°C overnight. The primary is detected by a biotinylated secondary antibody and visualized using an

HRP conjugated SP system.



Western Blotting

Image 2. Western Blot Positive WB detected in: K562 whole cell lysate, HepG2 whole cell lysate All lanes: GATB antibody at 3.4 µg/mL Secondary Goat polyclonal to rabbit IgG at 1/50000 dilution Predicted band size: 62 kDa Observed band size: 62 kDa



Immunofluorescence

Image 3. Immunofluorescence staining of HepG2 cells with ABIN7154041 at 1:100, counter-stained with DAPI. The cells were fixed in 4% formaldehyde, permeabilized using 0.2% Triton X-100 and blocked in 10% normal Goat Serum. The cells were then incubated with the antibody overnight at 4°C. The secondary antibody was Alexa Fluor 488-conjugated AffiniPure Goat Anti-Rabbit IgG(H+L).