

Datasheet for ABIN7154052
anti-GLRX5 antibody (AA 32-157)[Go to Product page](#)

2 Images

Overview

Quantity:	100 µg
Target:	GLRX5
Binding Specificity:	AA 32-157
Reactivity:	Human
Host:	Rabbit
Clonality:	Polyclonal
Conjugate:	This GLRX5 antibody is un-conjugated
Application:	ELISA, Immunohistochemistry (IHC)

Product Details

Immunogen:	Recombinant Human Glutaredoxin-related protein 5, mitochondrial protein (32-157AA)
Isotype:	IgG
Cross-Reactivity:	Human
Purification:	>95%, Protein G purified

Target Details

Target:	GLRX5
Alternative Name:	GLRX5 (GLRX5 Products)
Background:	Background: Monothiol glutaredoxin involved in the biogenesis of iron-sulfur clusters (PubMed:20364084). Involved in protein lipoylation, acting in the pathway that provides an iron-

Target Details

sulfur cluster to lipoate synthase (PubMed:24334290). Required for normal iron homeostasis. Required for normal regulation of hemoglobin synthesis by the iron-sulfur protein ACO1 (PubMed:20364084). May protect cells against apoptosis due to reactive oxygen species and oxidative stress (By similarity).

Aliases: C14orf87 antibody, Chromosome 14 open reading frame 87 antibody, FLB4739 antibody, GLRX 5 antibody, Glrx5 antibody, GLRX5_HUMAN antibody, Glutaredoxin 5 homolog antibody, Glutaredoxin related protein 5 antibody, Glutaredoxin-related protein 5 antibody, Glutaredoxin5 antibody, GRX5 antibody, MGC14129 antibody, mitochondrial antibody, Monothiol glutaredoxin-5 antibody, PRO1238 antibody

UniProt: [Q86SX6](#)

Pathways: [Cell RedoxHomeostasis](#)

Application Details

Application Notes: Recommended dilution: IHC:1:500-1:1000,

Restrictions: For Research Use only

Handling

Format: Liquid

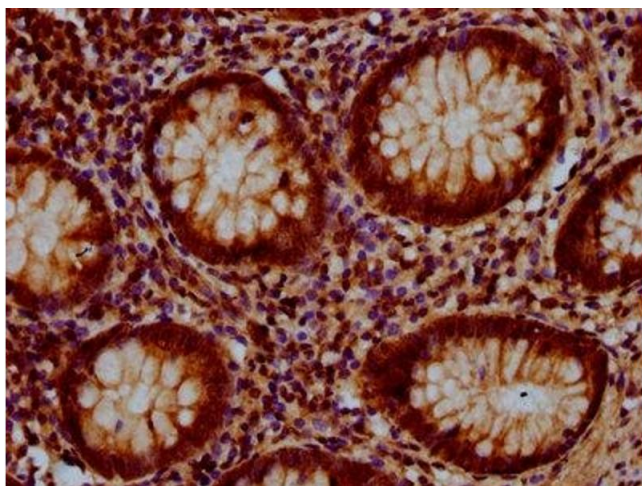
Buffer: Preservative: 0.03 % Proclin 300
Constituents: 50 % Glycerol, 0.01M PBS, pH 7.4

Preservative: ProClin

Precaution of Use: This product contains ProClin: a POISONOUS AND HAZARDOUS SUBSTANCE which should be handled by trained staff only.

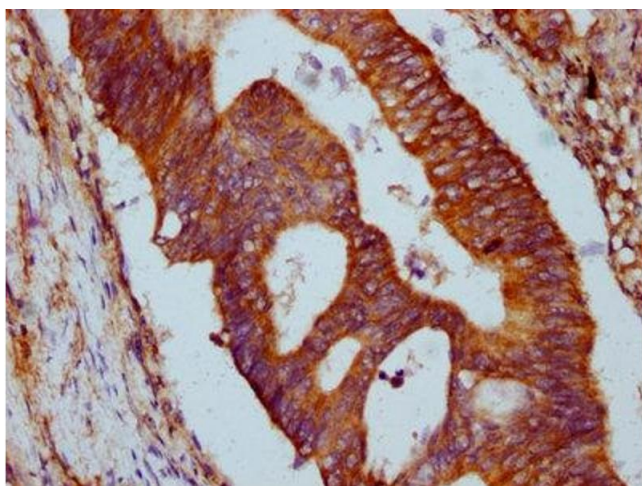
Storage: -20 °C,-80 °C

Storage Comment: Upon receipt, store at -20°C or -80°C. Avoid repeated freeze.



Immunohistochemistry

Image 1. IHC image of ABIN7154052 diluted at 1:500 and staining in paraffin-embedded human appendix tissue performed on a Leica Bond™ system. After dewaxing and hydration, antigen retrieval was mediated by high pressure in a citrate buffer (pH 6.0). Section was blocked with 10% normal goat serum 30min at RT. Then primary antibody (1% BSA) was incubated at 4°C overnight. The primary is detected by a biotinylated secondary antibody and visualized using an HRP conjugated SP system.



Immunohistochemistry

Image 2. IHC image of ABIN7154052 diluted at 1:500 and staining in paraffin-embedded human colon cancer performed on a Leica Bond™ system. After dewaxing and hydration, antigen retrieval was mediated by high pressure in a citrate buffer (pH 6.0). Section was blocked with 10% normal goat serum 30min at RT. Then primary antibody (1% BSA) was incubated at 4°C overnight. The primary is detected by a biotinylated secondary antibody and visualized using an HRP conjugated SP system.