



[Go to Product page](#)

Datasheet for ABIN7154056
anti-GCDH antibody (AA 45-300)

4 Images

Overview

Quantity:	100 µg
Target:	GCDH
Binding Specificity:	AA 45-300
Reactivity:	Human
Host:	Rabbit
Clonality:	Polyclonal
Conjugate:	This GCDH antibody is un-conjugated
Application:	Western Blotting (WB), Immunohistochemistry (IHC), ELISA, Immunoprecipitation (IP)

Product Details

Immunogen:	Recombinant Human Glutaryl-CoA dehydrogenase, mitochondrial protein (45-300AA)
Isotype:	IgG
Cross-Reactivity:	Human, Mouse
Purification:	>95%, Protein G purified

Target Details

Target:	GCDH
Alternative Name:	GCDH (GCDH Products)
Background:	Background: Catalyzes the oxidative decarboxylation of glutaryl-CoA to crotonyl-CoA and CO ₂ in the degradative pathway of L-lysine, L-hydroxylysine, and L-tryptophan metabolism. It uses

Target Details

electron transfer flavoprotein as its electron acceptor. Isoform Short is inactive.

Aliases: ACAD5 antibody, EC 1.3.99.7 antibody, GCD antibody, Gcdh antibody, GCDH_HUMAN antibody, Glutaryl CoA dehydrogenase antibody, Glutaryl CoA dehydrogenase, mitochondrial antibody, Glutaryl Coenzyme A dehydrogenase antibody, Glutaryl-CoA dehydrogenase antibody, mitochondrial antibody, MS781 antibody

UniProt: [Q92947](#)

Application Details

Application Notes: Recommended dilution: WB:1:500-1:5000, IHC:1:20-1:200, IP:1:200-1:2000,

Restrictions: For Research Use only

Handling

Format: Liquid

Buffer: Preservative: 0.03 % Proclin 300
Constituents: 50 % Glycerol, 0.01M PBS, PH 7.4

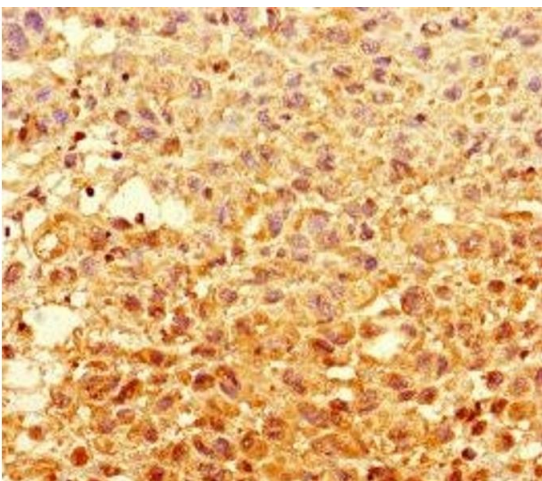
Preservative: ProClin

Precaution of Use: This product contains ProClin: a POISONOUS AND HAZARDOUS SUBSTANCE which should be handled by trained staff only.

Storage: -20 °C,-80 °C

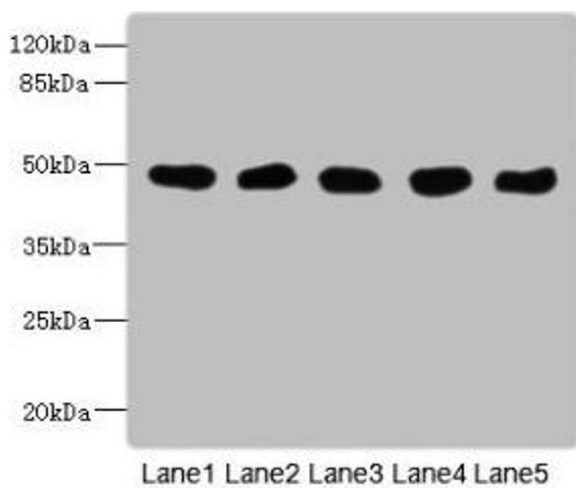
Storage Comment: Upon receipt, store at -20°C or -80°C. Avoid repeated freeze.

Images



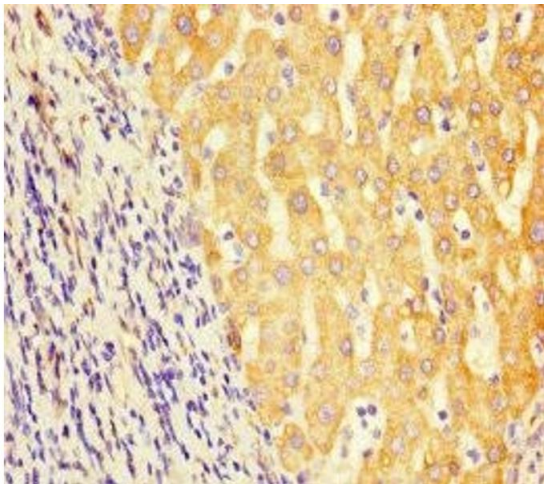
Immunohistochemistry

Image 1. Immunohistochemistry of paraffin-embedded human melanoma using ABIN7154056 at dilution of 1:100



Western Blotting

Image 2. Western Blot All lanes: GCDH antibody at 8 μ g/mL
Lane 1: Mouse kidney tissue Lane 2: Mouse liver tissue Lane 3: HeLa whole cell lysate Lane 4: MCF-7 whole cell lysate Lane 5: LO2 whole cell lysate Secondary Goat polyclonal to rabbit IgG at 1/10000 dilution Predicted band size: 49, 48 kDa Observed band size: 49 kDa



Immunohistochemistry

Image 3. Immunohistochemistry of paraffin-embedded human liver cancer using ABIN7154056 at dilution of 1:100

Please check the [product details page](#) for more images. Overall 4 images are available for ABIN7154056.