



[Go to Product page](#)

Datasheet for ABIN7154098

anti-GSTK1 antibody (AA 1-226)

3 Images

Overview

Quantity:	100 µL
Target:	GSTK1
Binding Specificity:	AA 1-226
Reactivity:	Human
Host:	Rabbit
Clonality:	Polyclonal
Conjugate:	This GSTK1 antibody is un-conjugated
Application:	Western Blotting (WB), Immunohistochemistry (IHC), ELISA

Product Details

Immunogen:	Recombinant Human Glutathione S-transferase kappa 1 protein (1-226AA)
Isotype:	IgG
Cross-Reactivity:	Human
Purification:	Antigen Affinity Purified

Target Details

Target:	GSTK1
Alternative Name:	GSTK1 (GSTK1 Products)
Background:	Background: Significant glutathione conjugating activity is found only with the model substrate, 1-chloro-2,4-dinitrobenzene (CDNB).

Target Details

Aliases: EC 2.5.1.18 antibody, Glutathione S Transferase kappa 1 antibody, Glutathione S transferase subunit 13 antibody, Glutathione S-transferase k1 antibody, Glutathione S-transferase kappa 1 antibody, Glutathione S-transferase subunit 13 antibody, Glutathione S-transferase subunit 13 homolog antibody, GST 13 13 antibody, GST 13-13 antibody, GST antibody, GST class kappa antibody, GST class-kappa antibody, GST13 antibody, GST13-13 antibody, GSTK1 1 antibody, Gstk1 antibody, GSTK1-1 antibody, GSTK1_HUMAN antibody, hGSTK1 antibody

UniProt: [Q9Y2Q3](#)

Application Details

Application Notes: Recommended dilution: WB:1:1000-1:5000, IHC:1:20-1:200,

Restrictions: For Research Use only

Handling

Format: Liquid

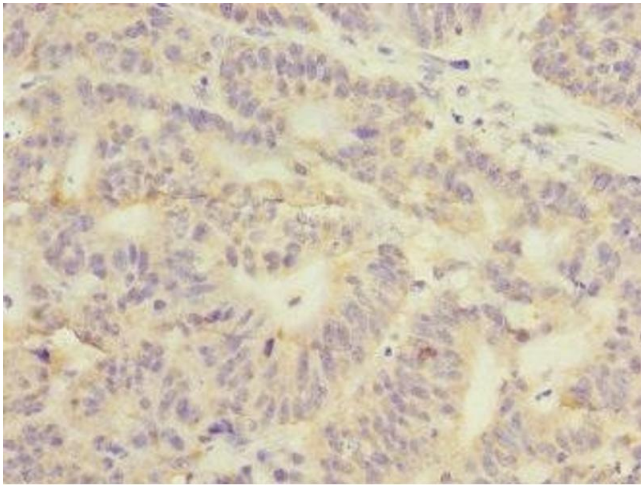
Buffer: PBS with 0.02 % sodium azide, 50 % glycerol, pH 7.3.

Preservative: Sodium azide

Precaution of Use: This product contains Sodium azide: a POISONOUS AND HAZARDOUS SUBSTANCE which should be handled by trained staff only.

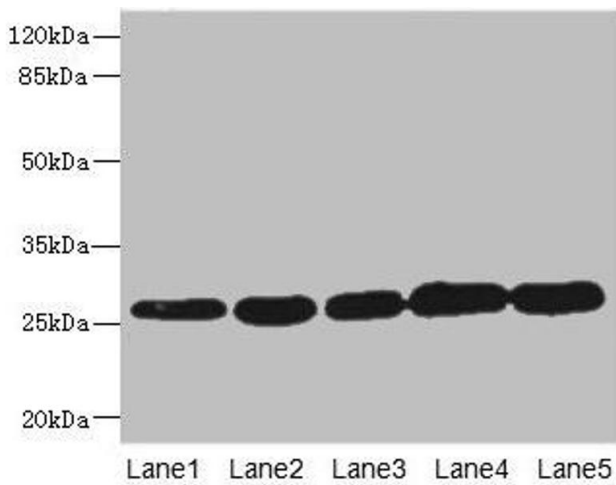
Storage: -20 °C,-80 °C

Storage Comment: Upon receipt, store at -20°C or -80°C. Avoid repeated freeze.



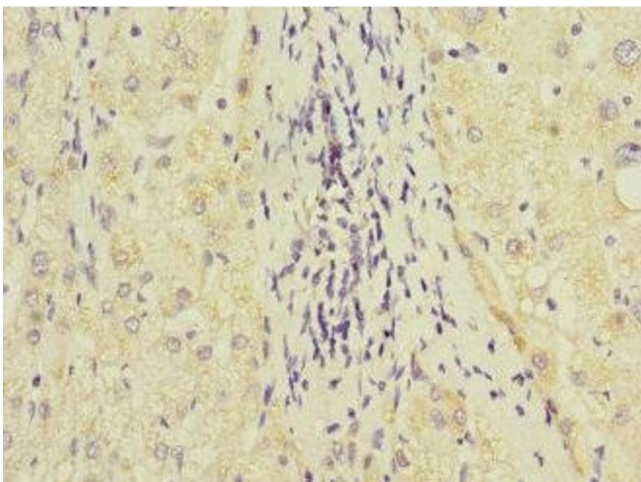
Immunohistochemistry

Image 1. Immunohistochemistry of paraffin-embedded human colon cancer using ABIN7154098 at dilution of 1:100



Western Blotting

Image 2. Western blot All lanes: GSTK1 antibody at 0.51 μ g/mL Lane 1: MCF-7 whole cell lysate Lane 2: K562 whole cell lysate Lane 3: HeLa whole cell lysate Lane 4: HepG2 whole cell lysate Lane 5: Raji whole cell lysate Secondary Goat polyclonal to rabbit IgG at 1/10000 dilution Predicted band size: 26, 32, 25, 21 kDa Observed band size: 26 kDa



Immunohistochemistry

Image 3. Immunohistochemistry of paraffin-embedded human liver cancer using ABIN7154098 at dilution of 1:100