



[Go to Product page](#)

Datasheet for ABIN7154126

anti-Glutathione Synthetase antibody (AA 290-418)

3 Images

Overview

Quantity:	100 µg
Target:	Glutathione Synthetase (GSS)
Binding Specificity:	AA 290-418
Reactivity:	Human
Host:	Rabbit
Clonality:	Polyclonal
Conjugate:	This Glutathione Synthetase antibody is un-conjugated
Application:	Western Blotting (WB), Immunohistochemistry (IHC), ELISA

Product Details

Immunogen:	Recombinant Human Glutathione synthetase protein (290-418AA)
Isotype:	IgG
Cross-Reactivity:	Human, Mouse, Rat
Purification:	>95%, Protein G purified

Target Details

Target:	Glutathione Synthetase (GSS)
Alternative Name:	GSS (GSS Products)
Background:	Background: cytosol, extracellular exosome, ATP binding, glutathione binding, glutathione synthase activity, identical protein binding, magnesium ion binding, protein homodimerization

Target Details

activity, cellular amino acid metabolic process, glutathione biosynthetic process

Aliases: epididymis secretory sperm binding protein Li 64p antibody, epididymis secretory sperm binding protein Li 88n antibody, Glutathione synthase antibody, Glutathione synthetase antibody, GSH S antibody, GSH synthetase antibody, GSH-S antibody, GSHB_HUMAN antibody, GSHS antibody, GSS antibody, HEL-S-64p antibody, HEL-S-88n antibody, MGC14098 antibody, OTTHUMP00000030711 antibody

UniProt: [P48637](#)

Pathways: [Warburg Effect](#)

Application Details

Application Notes: Recommended dilution: WB:1:500-1:5000, IHC:1:500-1:1000,

Restrictions: For Research Use only

Handling

Format: Liquid

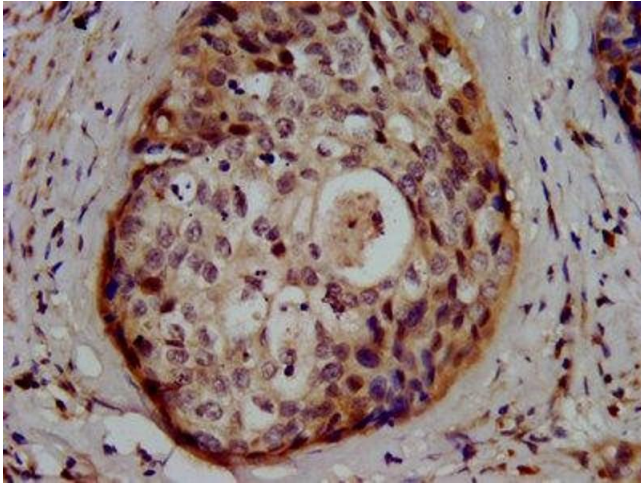
Buffer: Preservative: 0.03 % Proclin 300
Constituents: 50 % Glycerol, 0.01M PBS, pH 7.4

Preservative: ProClin

Precaution of Use: This product contains ProClin: a POISONOUS AND HAZARDOUS SUBSTANCE which should be handled by trained staff only.

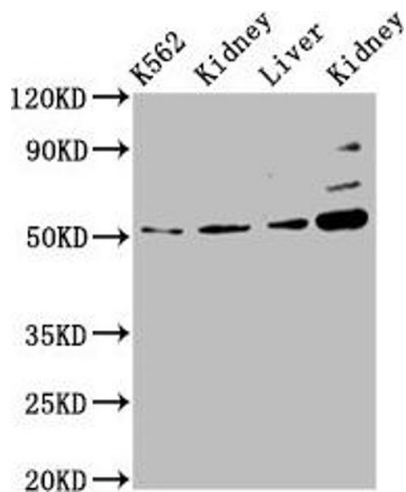
Storage: -20 °C,-80 °C

Storage Comment: Upon receipt, store at -20°C or -80°C. Avoid repeated freeze.



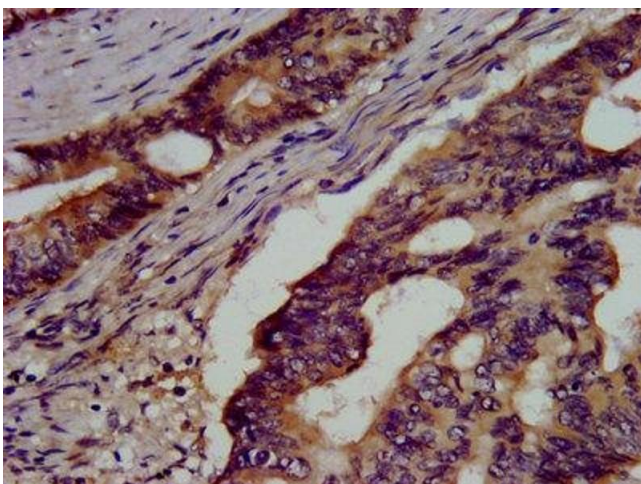
Immunohistochemistry

Image 1. IHC image of ABIN7154126 diluted at 1:500 and staining in paraffin-embedded human cervical cancer performed on a Leica Bond™ system. After dewaxing and hydration, antigen retrieval was mediated by high pressure in a citrate buffer (pH 6.0). Section was blocked with 10% normal goat serum 30min at RT. Then primary antibody (1% BSA) was incubated at 4°C overnight. The primary is detected by a biotinylated secondary antibody and visualized using an HRP conjugated SP system.



Western Blotting

Image 2. Western Blot Positive WB detected in: K562 whole cell lysate, Rat kidney tissue, Mouse liver tissue, Mouse kidney tissue. All lanes: GSS antibody at 5.1 µg/mL. Secondary Goat polyclonal to rabbit IgG at 1/50000 dilution. Predicted band size: 53, 41 kDa. Observed band size: 53 kDa.



Immunohistochemistry

Image 3. IHC image of ABIN7154126 diluted at 1:500 and staining in paraffin-embedded human colon cancer performed on a Leica Bond™ system. After dewaxing and hydration, antigen retrieval was mediated by high pressure in a citrate buffer (pH 6.0). Section was blocked with 10% normal goat serum 30min at RT. Then primary antibody (1% BSA) was incubated at 4°C overnight. The primary is detected by a biotinylated secondary antibody and visualized using an HRP conjugated SP system.