



Datasheet for ABIN7154130
anti-CHAC1 antibody (AA 43-264)



[Go to Product page](#)

2 Images

Overview

| | |
|----------------------|--|
| Quantity: | 100 µg |
| Target: | CHAC1 |
| Binding Specificity: | AA 43-264 |
| Reactivity: | Human |
| Host: | Rabbit |
| Clonality: | Polyclonal |
| Conjugate: | This CHAC1 antibody is un-conjugated |
| Application: | ELISA, Immunohistochemistry (IHC), Immunofluorescence (IF) |

Product Details

| | |
|-------------------|--|
| Immunogen: | Recombinant Human Glutathione-specific gamma-glutamylcyclotransferase 1 protein (43-264AA) |
| Isotype: | IgG |
| Cross-Reactivity: | Human |
| Purification: | >95%, Protein G purified |

Target Details

| | |
|-------------------|--|
| Target: | CHAC1 |
| Alternative Name: | CHAC1 (CHAC1 Products) |
| Background: | Background: Catalyzes the cleavage glutathione into 5-oxoproline and a Cys-Gly dipeptide. Acts |

Target Details

specifically on glutathione, but not on other gamma-glutamyl peptides. Glutathione depletion is an important factor for apoptosis initiation and execution (PubMed:23070364). Acts as a pro-apoptotic component of the unfolded protein response pathway by mediating the pro-apoptotic effects of the ATF4-ATF3-DDIT3/CHOP cascade (PubMed:19109178). Negative regulator of Notch signaling pathway involved in embryonic neurogenesis: acts by inhibiting Notch cleavage by furin, maintaining Notch in an immature inactive form, thereby promoting neurogenesis in embryos (PubMed:22445366).

Aliases: Blocks Notch protein antibody, Botch antibody, Cation transport regulator like protein 1 antibody, Cation transport regulator-like protein 1 antibody, ChaC antibody, ChaC cation transport regulator homolog 1 antibody, ChaC cation transport regulator like 1 antibody, chac1 antibody, CHAC1_HUMAN antibody, Gamma GCT acting on glutathione homolog 1 antibody, Gamma-GCG 1 antibody, Glutathione-specific gamma-glutamylcyclotransferase 1 antibody

UniProt: [Q9BUX1](#)

Application Details

Application Notes: Recommended dilution: IHC:1:20-1:200, IF:1:50-1:500,

Restrictions: For Research Use only

Handling

Format: Liquid

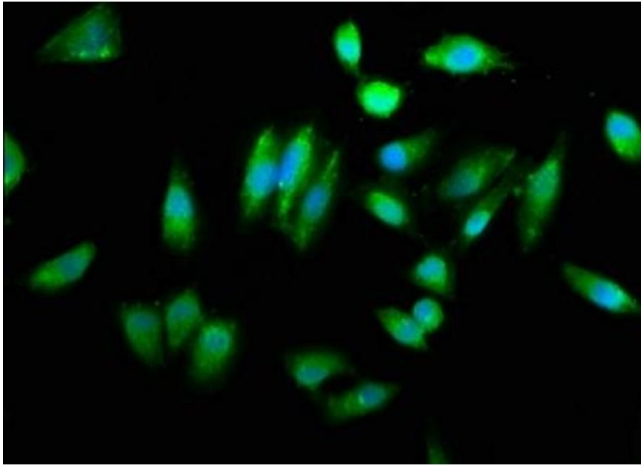
Buffer: Preservative: 0.03 % Proclin 300
Constituents: 50 % Glycerol, 0.01M PBS, PH 7.4

Preservative: ProClin

Precaution of Use: This product contains ProClin: a POISONOUS AND HAZARDOUS SUBSTANCE which should be handled by trained staff only.

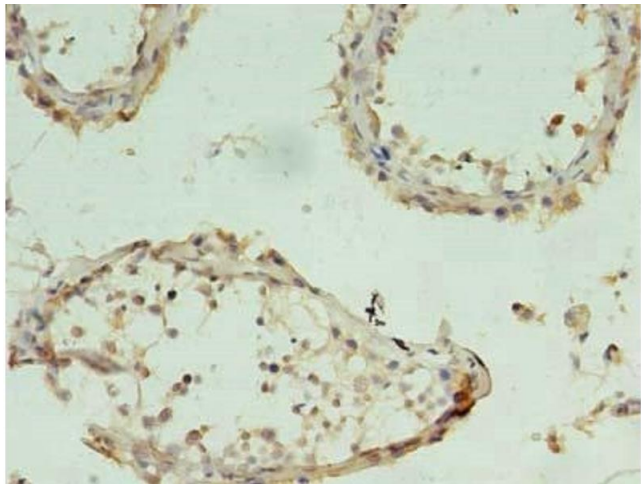
Storage: -20 °C,-80 °C

Storage Comment: Upon receipt, store at -20°C or -80°C. Avoid repeated freeze.



Immunofluorescence

Image 1. Immunofluorescence staining of HeLa cells with ABIN7154130 at 1:260, counter-stained with DAPI. The cells were fixed in 4 % formaldehyde, permeabilized using 0.2 % Triton X-100 and blocked in 10 % normal Goat Serum. The cells were then incubated with the antibody overnight at 4 °C. The secondary antibody was Alexa Fluor 488-conjugated AffiniPure Goat Anti-Rabbit IgG(H+L).



Immunohistochemistry

Image 2. Immunohistochemistry of paraffin-embedded human testis tissue using ABIN7154130 at dilution of 1:100