



[Go to Product page](#)

Datasheet for ABIN7154159
anti-GPD1 antibody (AA 1-349)

2 Images

Overview

Quantity:	100 µg
Target:	GPD1
Binding Specificity:	AA 1-349
Reactivity:	Human
Host:	Rabbit
Clonality:	Polyclonal
Conjugate:	This GPD1 antibody is un-conjugated
Application:	ELISA, Immunohistochemistry (IHC), Immunofluorescence (IF)

Product Details

Immunogen:	Recombinant Human Glycerol-3-phosphate dehydrogenase [NAD(+)], cytoplasmic protein (1-349AA)
Isotype:	IgG
Cross-Reactivity:	Human
Purification:	>95%, Protein G purified

Target Details

Target:	GPD1
Alternative Name:	GPD1 (GPD1 Products)
Background:	A1747587 antibody, cytoplasmic antibody, EC 1.1.1.8 antibody, FLJ26652 antibody, G3PD

Target Details

antibody, Gdc-1 antibody, Gdc1 antibody, Gdp1 antibody, Glycerol 3 phosphate dehydrogenase 1 antibody, Glycerol 3 phosphate dehydrogenase cytosolic antibody, Glycerol 3 phosphate dehydrogenase soluble antibody, Glycerol-3-phosphate dehydrogenase [NAD+] antibody, Glycerol-3-phosphate dehydrogenase [NAD+], cytoplasmic antibody, Glycerol-3-phosphate dehydrogenase 1 (soluble) antibody, Glycerol-3-phosphate dehydrogenase antibody, Glycerol-3-phosphate dehydrogenase, soluble antibody, Glycerphosphate dehydrogenase antibody, GPD-C antibody, gpd1 antibody, Gpd1 protein antibody, Gpd3 antibody, GPDA_HUMAN antibody, Gpdc antibody, GPDH antibody, GPDH-C antibody, Gpdhc antibody, HTGT1 antibody, KIAA4010 antibody, MGC93453 antibody, MGPD antibody, mKIAA4010 antibody

UniProt: [P21695](#)

Application Details

Application Notes: Recommended dilution: IHC:1:20-1:200, IF:1:50-1:200,

Restrictions: For Research Use only

Handling

Format: Liquid

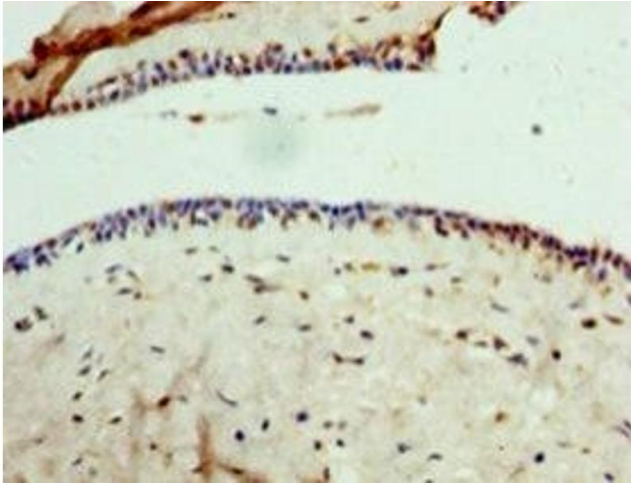
Buffer: Preservative: 0.03 % Proclin 300
Constituents: 50 % Glycerol, 0.01M PBS, PH 7.4

Preservative: ProClin

Precaution of Use: This product contains ProClin: a POISONOUS AND HAZARDOUS SUBSTANCE which should be handled by trained staff only.

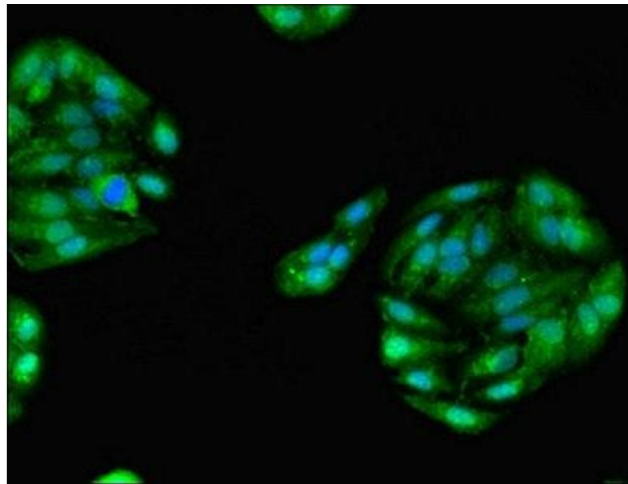
Storage: -20 °C,-80 °C

Storage Comment: Upon receipt, store at -20°C or -80°C. Avoid repeated freeze.



Immunohistochemistry

Image 1. Immunohistochemistry of paraffin-embedded human breast cancer using ABIN7154159 at dilution of 1:100



Immunofluorescence

Image 2. Immunofluorescent analysis of HepG2 cells using ABIN7154159 at dilution of 1:100 and Alexa Fluor 488-conjugated AffiniPure Goat Anti-Rabbit IgG(H+L)