



[Go to Product page](#)

Datasheet for ABIN7154163
anti-GPD2 antibody (AA 25-325)

2 Images

Overview

Quantity:	100 µL
Target:	GPD2
Binding Specificity:	AA 25-325
Reactivity:	Human
Host:	Rabbit
Clonality:	Polyclonal
Conjugate:	This GPD2 antibody is un-conjugated
Application:	ELISA, Immunohistochemistry (IHC)

Product Details

Immunogen:	Recombinant Human Glycerol-3-phosphate dehydrogenase, mitochondrial protein (25-325AA)
Isotype:	IgG
Cross-Reactivity:	Human
Purification:	Antigen Affinity Purified

Target Details

Target:	GPD2
Alternative Name:	GPD2 (GPD2 Products)
Background:	Background: mitochondrial inner membrane, calcium ion binding, glycerol-3-phosphate dehydrogenase activity, cellular lipid metabolic process

Target Details

Aliases: GDH2 antibody, Glycerol 3 phosphate dehydrogenase 2 (mitochondrial) antibody, Glycerol 3 phosphate dehydrogenase 2 antibody, Glycerol 3 phosphate dehydrogenase mitochondrial antibody, Glycerol-3-phosphate dehydrogenase antibody, GPD 2 antibody, GPD M antibody, GPD-M antibody, gpd2 antibody, GPDH M antibody, GPDH-M antibody, GPDM antibody, GPDM_HUMAN antibody, mGPDH antibody, mitochondrial antibody, Mitochondrial glycerophosphate dehydrogenase antibody, mtGPD antibody, OTTHUMP00000162788 antibody, OTTHUMP00000204452 antibody, OTTHUMP00000204453 antibody, OTTHUMP00000204458 antibody

UniProt: [P43304](#)

Application Details

Application Notes: Recommended dilution: IHC:1:20-1:200,

Restrictions: For Research Use only

Handling

Format: Liquid

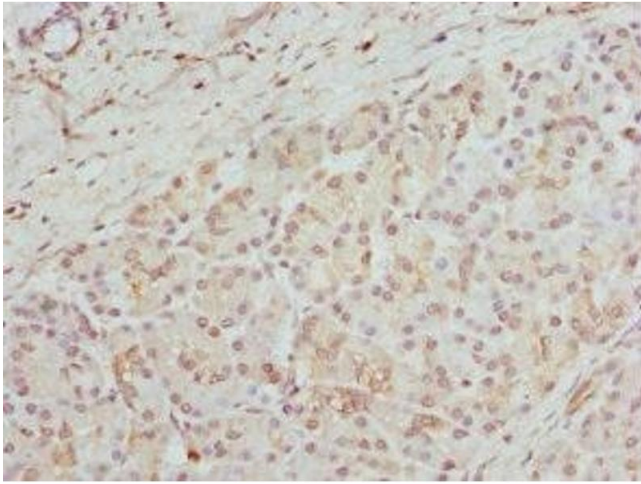
Buffer: PBS with 0.02 % sodium azide, 50 % glycerol, pH 7.3.

Preservative: Sodium azide

Precaution of Use: This product contains Sodium azide: a POISONOUS AND HAZARDOUS SUBSTANCE which should be handled by trained staff only.

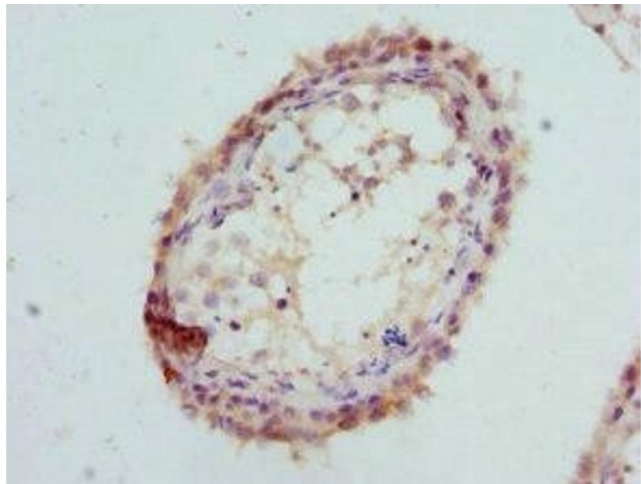
Storage: -20 °C,-80 °C

Storage Comment: Upon receipt, store at -20°C or -80°C. Avoid repeated freeze.



Immunohistochemistry

Image 1. Immunohistochemistry of paraffin-embedded human pancreatic tissue using ABIN7154163 at dilution of 1:100



Immunohistochemistry

Image 2. Immunohistochemistry of paraffin-embedded human testis tissue using ABIN7154163 at dilution of 1:100