



[Go to Product page](#)

Datasheet for ABIN7154164  
**anti-GPD2 antibody (AA 43-727)**

2 Images

Overview

Quantity:	100 µg
Target:	GPD2
Binding Specificity:	AA 43-727
Reactivity:	Human
Host:	Rabbit
Clonality:	Polyclonal
Conjugate:	This GPD2 antibody is un-conjugated
Application:	ELISA, Immunohistochemistry (IHC)

Product Details

Immunogen:	Recombinant Human Glycerol-3-phosphate dehydrogenase, mitochondrial protein (43-727AA)
Isotype:	IgG
Cross-Reactivity:	Human
Purification:	>95%, Protein G purified

Target Details

Target:	GPD2
Alternative Name:	GPD2 ( <a href="#">GPD2 Products</a> )
Background:	Background: mitochondrial inner membrane, calcium ion binding, glycerol-3-phosphate dehydrogenase activity, cellular lipid metabolic process, small molecule metabolic process

## Target Details

---

Aliases: GDH2 antibody, Glycerol 3 phosphate dehydrogenase 2 (mitochondrial) antibody, Glycerol 3 phosphate dehydrogenase 2 antibody, Glycerol 3 phosphate dehydrogenase mitochondrial antibody, Glycerol-3-phosphate dehydrogenase antibody, GPD 2 antibody, GPD M antibody, GPD-M antibody, gpd2 antibody, GPDH M antibody, GPDH-M antibody, GPDM antibody, GPDM\_HUMAN antibody, mGPDH antibody, mitochondrial antibody, Mitochondrial glycerophosphate dehydrogenase antibody, mtGPD antibody, OTTHUMP00000162788 antibody, OTTHUMP00000204452 antibody, OTTHUMP00000204453 antibody, OTTHUMP00000204458 antibody

UniProt: [P43304](#)

## Application Details

---

Application Notes: Recommended dilution: IHC:1:20-1:200,

Restrictions: For Research Use only

## Handling

---

Format: Liquid

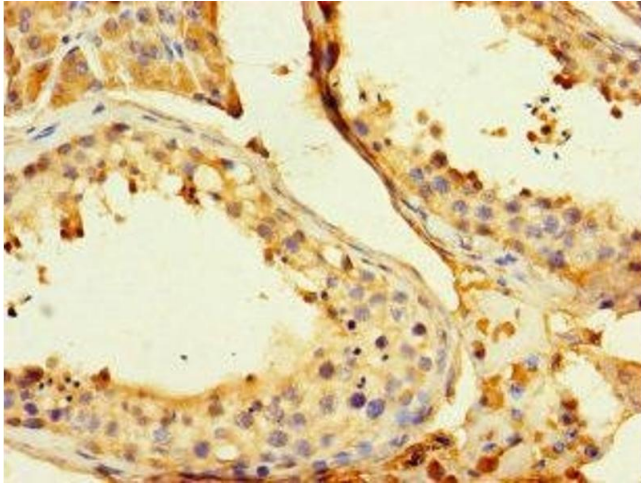
Buffer: Preservative: 0.03 % Proclin 300  
Constituents: 50 % Glycerol, 0.01M PBS, PH 7.4

Preservative: ProClin

Precaution of Use: This product contains ProClin: a POISONOUS AND HAZARDOUS SUBSTANCE which should be handled by trained staff only.

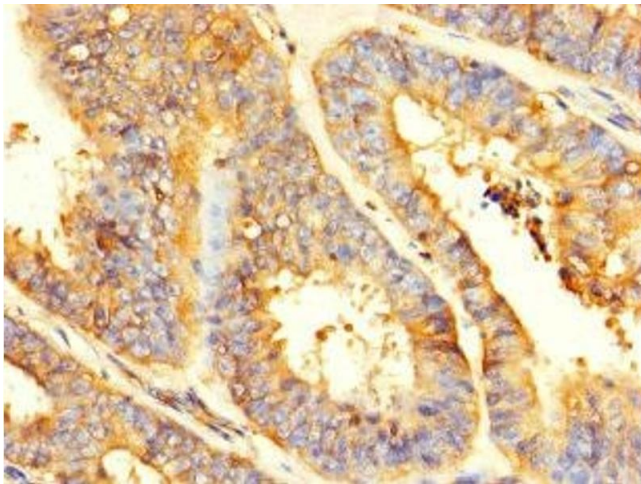
Storage: -20 °C,-80 °C

Storage Comment: Upon receipt, store at -20°C or -80°C. Avoid repeated freeze.



#### Immunohistochemistry

**Image 1.** Immunohistochemistry of paraffin-embedded human testis tissue using ABIN7154164 at dilution of 1:100



#### Immunohistochemistry

**Image 2.** Immunohistochemistry of paraffin-embedded human endometrial cancer using ABIN7154164 at dilution of 1:100