

Datasheet for ABIN7154177
anti-GLDC antibody (AA 868-984)[Go to Product page](#)

1 Image

Overview

Quantity:	100 µg
Target:	GLDC
Binding Specificity:	AA 868-984
Reactivity:	Human
Host:	Rabbit
Clonality:	Polyclonal
Conjugate:	This GLDC antibody is un-conjugated
Application:	Immunohistochemistry (IHC), ELISA

Product Details

Immunogen:	Recombinant Human Glycine dehydrogenase (decarboxylating), mitochondrial protein (868-984AA)
Isotype:	IgG
Cross-Reactivity:	Human
Purification:	>95%, Protein G purified

Target Details

Target:	GLDC
Alternative Name:	GLDC (GLDC Products)
Background:	Background: The glycine cleavage system catalyzes the degradation of glycine. The P protein

Target Details

(GLDC) binds the alpha-amino group of glycine through its pyridoxal phosphate cofactor, CO(2) is released and the remaining methylamine moiety is then transferred to the lipoamide cofactor of the H protein (GCSH).

Aliases: GCE antibody, GCSP antibody, GCSP_HUMAN antibody, GLDC antibody, Glycine cleavage system P protein antibody, glycine cleavage system protein P antibody, Glycine decarboxylase antibody, glycine decarboxylase P protein antibody, Glycine dehydrogenase (decarboxylating) mitochondrial antibody, Glycine dehydrogenase [decarboxylating], mitochondrial antibody, Glycine dehydrogenase (decarboxylating) antibody, HYGN1 antibody, MGC138198 antibody, MGC138200 antibody, NKH antibody

UniProt: [P23378](#)

Application Details

Application Notes: Recommended dilution: IHC:1:500-1:1000,

Restrictions: For Research Use only

Handling

Format: Liquid

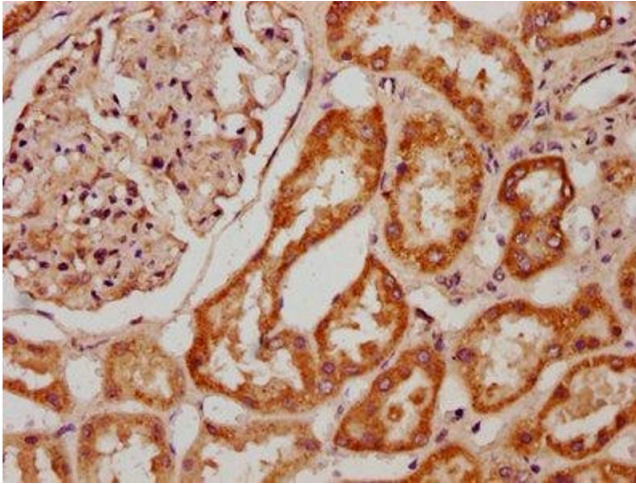
Buffer: Preservative: 0.03 % Proclin 300
Constituents: 50 % Glycerol, 0.01M PBS, pH 7.4

Preservative: ProClin

Precaution of Use: This product contains ProClin: a POISONOUS AND HAZARDOUS SUBSTANCE which should be handled by trained staff only.

Storage: -20 °C,-80 °C

Storage Comment: Upon receipt, store at -20°C or -80°C. Avoid repeated freeze.



Immunohistochemistry

Image 1. IHC image of ABIN7154177 diluted at 1:600 and staining in paraffin-embedded human kidney tissue performed on a Leica Bond™ system. After dewaxing and hydration, antigen retrieval was mediated by high pressure in a citrate buffer (pH 6.0). Section was blocked with 10 % normal goat serum 30 min at RT. Then primary antibody (1 % BSA) was incubated at 4 °C overnight. The primary is detected by a biotinylated secondary antibody and visualized using an HRP conjugated SP system.