

Datasheet for ABIN7154202
anti-AGL antibody (AA 1217-1378)[Go to Product page](#)

1 Image

Overview

Quantity:	100 µL
Target:	AGL
Binding Specificity:	AA 1217-1378
Reactivity:	Human
Host:	Rabbit
Clonality:	Polyclonal
Conjugate:	This AGL antibody is un-conjugated
Application:	ELISA, Immunofluorescence (IF)

Product Details

Immunogen:	Recombinant Human Glycogen debranching enzyme protein (1217-1378AA)
Isotype:	IgG
Cross-Reactivity:	Human
Purification:	>95%, Protein G purified

Target Details

Target:	AGL
Alternative Name:	AGL (AGL Products)
Background:	Background: Multifunctional enzyme acting as 1,4-alpha-D-glucan:1,4-alpha-D-glucan 4-alpha-D-glycosyltransferase and amylo-1,6-glucosidase in glycogen degradation.

Target Details

Aliases: 1110061017Rik antibody, 4-1 antibody, 4-glucantransferase antibody, 6-glucosidase antibody, 9430004C13Rik antibody, 9630046L06Rik antibody, AGL antibody, A1850929 antibody, Amylo 1 6 glucosidase 4 alpha glucanotransferase antibody, Amylo-1 antibody, Amylo-alpha-1 antibody, C77197 antibody, Dextrin 6-alpha-D-glucosidase antibody, GDE antibody, GDE_HUMAN antibody, Glycogen debrancher antibody, Glycogen debranching enzyme antibody, Glycogen storage disease type III antibody, Oligo-1 antibody

UniProt: [P35573](#)

Pathways: [Cellular Glucan Metabolic Process](#)

Application Details

Application Notes: Recommended dilution: IF:1:50-1:200,

Restrictions: For Research Use only

Handling

Format: Liquid

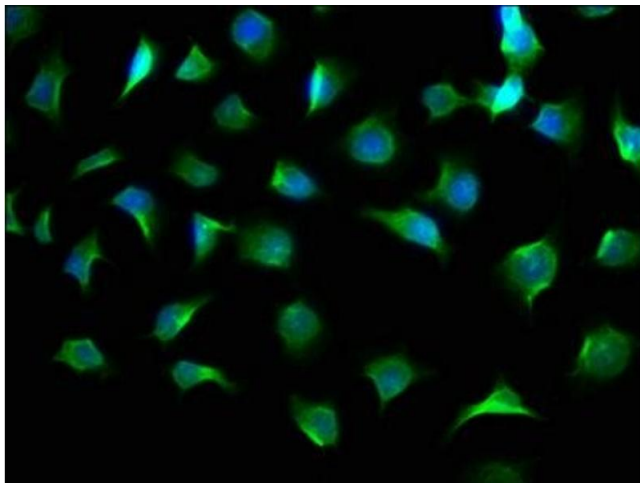
Buffer: Preservative: 0.03 % Proclin 300
Constituents: 50 % Glycerol, 0.01M PBS, pH 7.4

Preservative: ProClin

Precaution of Use: This product contains ProClin: a POISONOUS AND HAZARDOUS SUBSTANCE which should be handled by trained staff only.

Storage: -20 °C,-80 °C

Storage Comment: Upon receipt, store at -20°C or -80°C. Avoid repeated freeze.



Immunofluorescence

Image 1. Immunofluorescence staining of A549 cells with ABIN7154202 at 1:100, counter-stained with DAPI. The cells were fixed in 4 % formaldehyde, permeabilized using 0.2 % Triton X-100 and blocked in 10 % normal Goat Serum. The cells were then incubated with the antibody overnight at 4 °C. The secondary antibody was Alexa Fluor 488-conjugated AffiniPure Goat Anti-Rabbit IgG(H+L).