

Datasheet for ABIN7154214
anti-GSK3 alpha antibody (AA 36-118)[Go to Product page](#)

2 Images

Overview

Quantity:	100 µg
Target:	GSK3 alpha (GSK3a)
Binding Specificity:	AA 36-118
Reactivity:	Human
Host:	Rabbit
Clonality:	Polyclonal
Conjugate:	This GSK3 alpha antibody is un-conjugated
Application:	Western Blotting (WB), ELISA, Immunofluorescence (IF)

Product Details

Immunogen:	Recombinant Human Glycogen synthase kinase-3 alpha protein (36-118AA)
Isotype:	IgG
Cross-Reactivity:	Human
Purification:	>95%, Protein G purified

Target Details

Target:	GSK3 alpha (GSK3a)
Alternative Name:	GSK3A (GSK3a Products)
Background:	Background: Constitutively active protein kinase that acts as a negative regulator in the hormonal control of glucose homeostasis, Wnt signaling and regulation of transcription factors

Target Details

and microtubules, by phosphorylating and inactivating glycogen synthase (GYS1 or GYS2), CTNNB1/beta-catenin, APC and AXIN1. Requires primed phosphorylation of the majority of its substrates. Contributes to insulin regulation of glycogen synthesis by phosphorylating and inhibiting GYS1 activity and hence glycogen synthesis. Regulates glycogen metabolism in liver, but not in muscle. May also mediate the development of insulin resistance by regulating activation of transcription factors. In Wnt signaling, regulates the level and transcriptional activity of nuclear CTNNB1/beta-catenin. Facilitates amyloid precursor protein (APP) processing and the generation of APP-derived amyloid plaques found in Alzheimer disease. May be involved in the regulation of replication in pancreatic beta-cells. Is necessary for the establishment of neuronal polarity and axon outgrowth. Through phosphorylation of the anti-apoptotic protein MCL1, may control cell apoptosis in response to growth factors deprivation. Aliases: DKFZp686D0638 antibody, Glycogen synthase kinase 3 alpha antibody, Glycogen synthase kinase-3 alpha antibody, GSK 3 alpha antibody, GSK 3A antibody, GSK-3 alpha antibody, Gsk3a antibody, GSK3A_HUMAN antibody, GSK3alpha antibody, Serine/threonine protein kinase GSK3A antibody

UniProt: [P49840](#)

Pathways: [PI3K-Akt Signaling](#), [WNT Signaling](#), [Fc-epsilon Receptor Signaling Pathway](#), [EGFR Signaling Pathway](#), [Neurotrophin Signaling Pathway](#), [cAMP Metabolic Process](#), [Cellular Glucan Metabolic Process](#), [Regulation of Muscle Cell Differentiation](#), [Regulation of G-Protein Coupled Receptor Protein Signaling](#), [ER-Nucleus Signaling](#), [Regulation of Carbohydrate Metabolic Process](#), [BCR Signaling](#), [Warburg Effect](#)

Application Details

Application Notes: Recommended dilution: WB:1:500-1:5000, IF:1:50-1:200,

Restrictions: For Research Use only

Handling

Format: Liquid

Buffer: Preservative: 0.03 % Proclin 300
Constituents: 50 % Glycerol, 0.01M PBS, pH 7.4

Preservative: ProClin

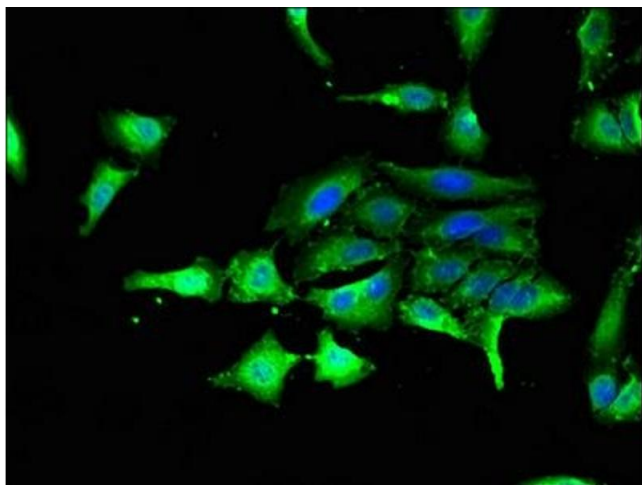
Precaution of Use: This product contains ProClin: a POISONOUS AND HAZARDOUS SUBSTANCE which should be handled by trained staff only.

Handling

Storage: -20 °C, -80 °C

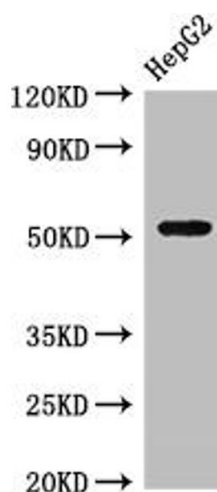
Storage Comment: Upon receipt, store at -20°C or -80°C. Avoid repeated freeze.

Images



Immunofluorescence

Image 1. Immunofluorescent analysis of HeLa cells using ABIN7154214 at dilution of 1:100 and Alexa Fluor 488-conjugated AffiniPure Goat Anti-Rabbit IgG(H+L)



Western Blotting

Image 2. Western Blot Positive WB detected in: HepG2 whole cell lysate All lanes: GSK3A antibody at 3 µg/mL Secondary Goat polyclonal to rabbit IgG at 1/50000 dilution Predicted band size: 51 kDa Observed band size: 51 kDa