

Datasheet for ABIN7154260
anti-GRHPR antibody (AA 1-328)[Go to Product page](#)

4 Images

Overview

Quantity:	100 µg
Target:	GRHPR
Binding Specificity:	AA 1-328
Reactivity:	Human
Host:	Rabbit
Clonality:	Polyclonal
Conjugate:	This GRHPR antibody is un-conjugated
Application:	Western Blotting (WB), ELISA, Immunohistochemistry (IHC), Immunofluorescence (IF)

Product Details

Immunogen:	Recombinant Human Glyoxylate reductase/hydroxypyruvate reductase protein (1-328AA)
Isotype:	IgG
Cross-Reactivity:	Human, Mouse, Rat
Purification:	>95%, Protein G purified

Target Details

Target:	GRHPR
Alternative Name:	GRHPR (GRHPR Products)
Background:	Background: Enzyme with hydroxy-pyruvate reductase, glyoxylate reductase and D-glycerate dehydrogenase enzymatic activities. Reduces hydroxypyruvate to D-glycerate, glyoxylate to

Target Details

glycolate oxidizes D-glycerate to hydroxypyruvate.

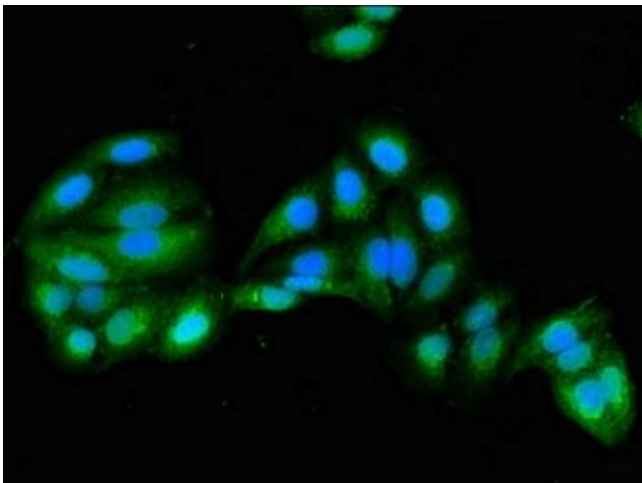
Aliases: GLXR antibody, glycerate 2 dehydrogenase antibody, GLYD antibody, Glyoxylate reductase/hydroxypyruvate reductase antibody, Grhpr antibody, GRHPR_HUMAN antibody, OTTHUMP00000021379 antibody, OTTHUMP00000021380 antibody, OTTHUMP00000046131 antibody, PH 2 antibody, PH2 antibody, Primary hyperoxaluria type 2 antibody

UniProt: [Q9UBQ7](#)

Application Details

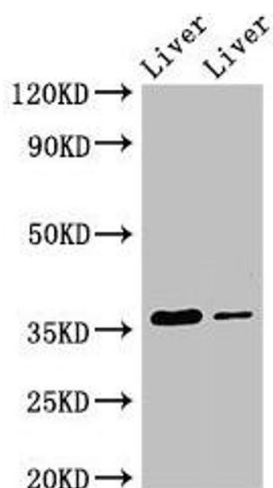
Application Notes:	Recommended dilution: WB:1:500-1:5000, IHC:1:20-1:200, IF:1:50-1:200,
Restrictions:	For Research Use only
Handling	
Format:	Liquid
Buffer:	Preservative: 0.03 % Proclin 300 Constituents: 50 % Glycerol, 0.01M PBS, pH 7.4
Preservative:	ProClin
Precaution of Use:	This product contains ProClin: a POISONOUS AND HAZARDOUS SUBSTANCE which should be handled by trained staff only.
Storage:	-20 °C,-80 °C
Storage Comment:	Upon receipt, store at -20°C or -80°C. Avoid repeated freeze.

Images



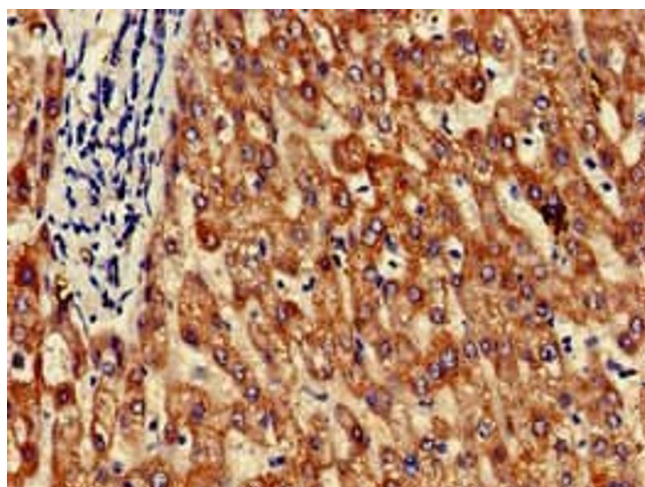
Immunofluorescence

Image 1. Immunofluorescent analysis of HepG2 cells using ABIN7154260 at dilution of 1:100 and Alexa Fluor 488-conjugated AffiniPure Goat Anti-Rabbit IgG(H+L)



Western Blotting

Image 2. Western Blot Positive WB detected in: Rat liver tissue, Mouse liver tissue All lanes: GRHPR antibody at 3.5 μ g/mL Secondary Goat polyclonal to rabbit IgG at 1/50000 dilution Predicted band size: 36, 28 kDa Observed band size: 36 kDa



Immunohistochemistry

Image 3. Immunohistochemistry of paraffin-embedded human liver tissue using ABIN7154260 at dilution of 1:100

Please check the [product details page](#) for more images. Overall 4 images are available for ABIN7154260.