

Datasheet for ABIN7154277  
**anti-Glypican 6 antibody (AA 24-529)**[Go to Product page](#)

## 1 Image

## Overview

Quantity:	100 µg
Target:	Glypican 6 (GPC6)
Binding Specificity:	AA 24-529
Reactivity:	Human
Host:	Rabbit
Clonality:	Polyclonal
Conjugate:	This Glypican 6 antibody is un-conjugated
Application:	ELISA, Immunohistochemistry (IHC)

## Product Details

Immunogen:	Recombinant Human Glypican-6 protein (24-529AA)
Isotype:	IgG
Cross-Reactivity:	Human
Purification:	>95%, Protein G purified

## Target Details

Target:	Glypican 6 (GPC6)
Alternative Name:	GPC6 ( <a href="#">GPC6 Products</a> )
Background:	Background: Cell surface proteoglycan that bears heparan sulfate. Putative cell surface coreceptor for growth factors, extracellular matrix proteins, proteases and anti-proteases.

## Target Details

Enhances migration and invasion of cancer cells through WNT5A signaling..

Aliases: ibody, Glypican 6 [Precursor] antibody, Glypican proteoglycan 6 antibody, Gpc6 antibody, GPC6\_HUMAN antibody, MGC126288 antibody, OMIMD1 antibody, PRO705 antibody, Secreted glypican 6 antibody, Secreted glypican-6 antibody, UNQ369 antibody

UniProt: [Q9Y625](#)

Pathways: [Glycosaminoglycan Metabolic Process](#)

## Application Details

Application Notes: Recommended dilution: IHC:1:200-1:500,

Restrictions: For Research Use only

## Handling

Format: Liquid

Buffer: Preservative: 0.03 % Proclin 300  
Constituents: 50 % Glycerol, 0.01M PBS, PH 7.4

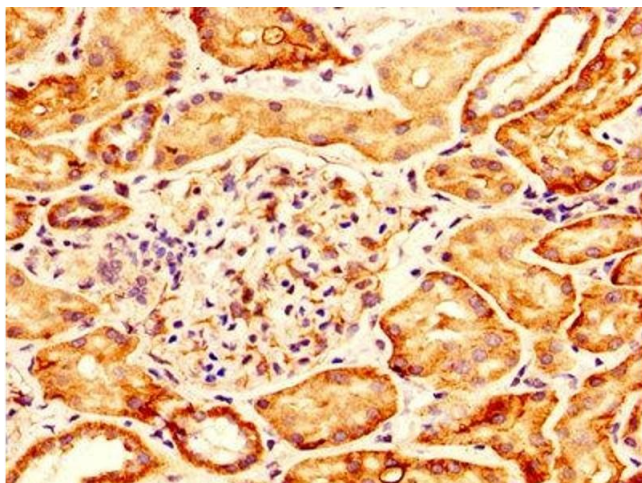
Preservative: ProClin

Precaution of Use: This product contains ProClin: a POISONOUS AND HAZARDOUS SUBSTANCE which should be handled by trained staff only.

Storage: -20 °C,-80 °C

Storage Comment: Upon receipt, store at -20°C or -80°C. Avoid repeated freeze.

## Images



### Immunohistochemistry

**Image 1.** IHC image of ABIN7154277 diluted at 1:300 and staining in paraffin-embedded human kidney tissue performed on a Leica Bond™ system. After dewaxing and hydration, antigen retrieval was mediated by high pressure in a citrate buffer (pH 6.0). Section was blocked with 10% normal goat serum 30min at RT. Then primary antibody (1% BSA) was incubated at 4°C overnight. The primary is detected by a biotinylated secondary antibody and

visualized using an HRP conjugated SP system.