



[Go to Product page](#)

Datasheet for ABIN7154290
anti-GOLM1 antibody (AA 112-401)

3 Images

Overview

Quantity:	100 µL
Target:	GOLM1
Binding Specificity:	AA 112-401
Reactivity:	Human
Host:	Rabbit
Clonality:	Polyclonal
Conjugate:	This GOLM1 antibody is un-conjugated
Application:	Western Blotting (WB), Immunohistochemistry (IHC), ELISA

Product Details

Immunogen:	Recombinant Human Golgi membrane protein 1 protein (112-401AA)
Isotype:	IgG
Cross-Reactivity:	Human
Purification:	Antigen Affinity Purified

Target Details

Target:	GOLM1
Alternative Name:	GOLM1 (GOLM1 Products)
Background:	Background: Unknown. Cellular response protein to viral infection. Aliases: bA379P1.3 antibody, C9orf155 antibody, Chromosome 9 open reading frame 155

Target Details

antibody, Golgi membrane protein 1 antibody, Golgi membrane protein GP73 antibody, Golgi phosphoprotein 2 antibody, Golgi protein 73 kD antibody, Golgi protein 73kD antibody, GOLM 1 antibody, GOLM1 antibody, GOLM1_HUMAN antibody, GOLPH 2 antibody, GOLPH2 antibody, GP 73 antibody, GP73 antibody, PSEC0257 antibody

UniProt: [Q8NBJ4](#)

Application Details

Application Notes: Recommended dilution: WB:1:500-1:2000, IHC:1:20-1:200,

Restrictions: For Research Use only

Handling

Format: Liquid

Buffer: PBS with 0.02 % sodium azide, 50 % glycerol, pH 7.3.

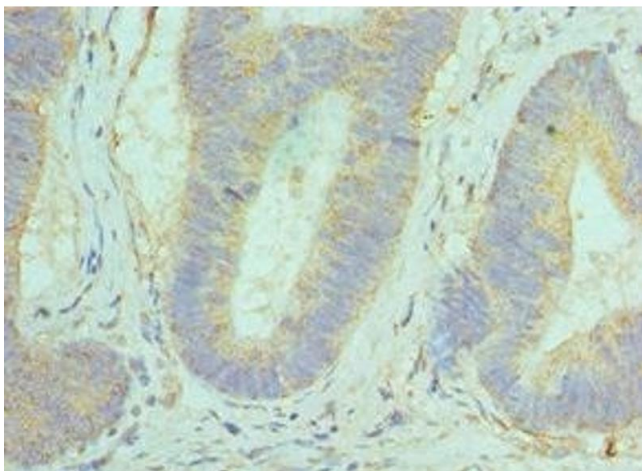
Preservative: Sodium azide

Precaution of Use: This product contains Sodium azide: a POISONOUS AND HAZARDOUS SUBSTANCE which should be handled by trained staff only.

Storage: -20 °C,-80 °C

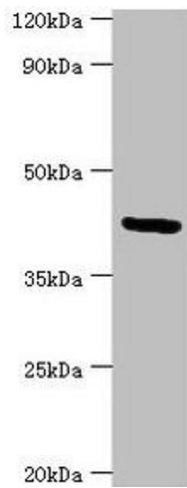
Storage Comment: Upon receipt, store at -20°C or -80°C. Avoid repeated freeze.

Images



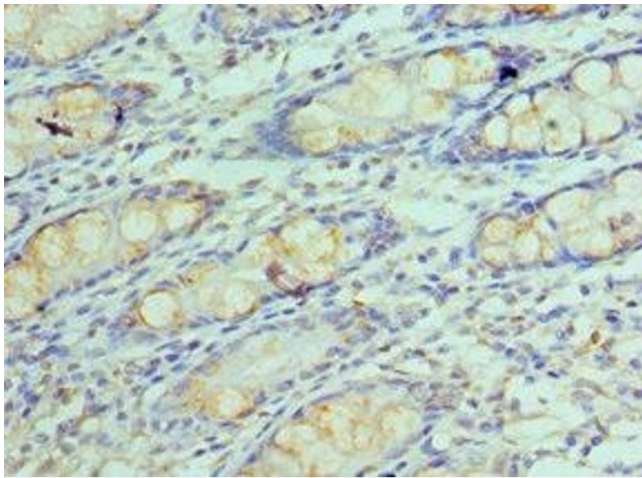
Immunohistochemistry

Image 1. Immunohistochemistry of paraffin-embedded human colon cancer using ABIN7154290 at dilution of 1:100



Western Blotting

Image 2. Western blot All lanes: Golgi membrane protein 1 antibody at 7 µg/mL + HeLa whole cell lysate Secondary Goat polyclonal to rabbit IgG at 1/10000 dilution Predicted band size: 46, 45 kDa Observed band size: 46 kDa



Immunohistochemistry

Image 3. Immunohistochemistry of paraffin-embedded human colon tissue using ABIN7154290 at dilution of 1:100