

Datasheet for ABIN7154296
anti-GOLPH3 antibody (AA 16-150)

5 Images

[Go to Product page](#)

Overview

Quantity:	100 µg
Target:	GOLPH3
Binding Specificity:	AA 16-150
Reactivity:	Human
Host:	Rabbit
Clonality:	Polyclonal
Conjugate:	This GOLPH3 antibody is un-conjugated
Application:	Western Blotting (WB), ELISA, Immunohistochemistry (IHC), Immunofluorescence (IF), Immunoprecipitation (IP)

Product Details

Immunogen:	Recombinant Human Golgi phosphoprotein 3 protein (16-150AA)
Isotype:	IgG
Cross-Reactivity:	Human
Purification:	>95%, Protein G purified

Target Details

Target:	GOLPH3
Alternative Name:	GOLPH3 (GOLPH3 Products)
Background:	Background: Phosphatidylinositol-4-phosphate-binding protein that links Golgi membranes to

Target Details

the cytoskeleton and may participate in the tensile force required for vesicle budding from the Golgi. Thereby, may play a role in Golgi membrane trafficking and could indirectly give its flattened shape to the Golgi apparatus. May also bind to the coatomer to regulate Golgi membrane trafficking. May play a role in anterograde transport from the Golgi to the plasma membrane and regulate secretion. Has also been involved in the control of the localization of Golgi enzymes through interaction with their cytoplasmic part. May play an indirect role in cell migration. Has also been involved in the modulation of mTOR signaling. May also be involved in the regulation of mitochondrial lipids biosynthesis.

Aliases: Coat protein antibody, Coat protein GPP34 antibody, FLJ90675 antibody, Golgi associated protein antibody, Golgi peripheral membrane protein 1, 34 kDa antibody, Golgi phosphoprotein 3 (coat protein) antibody, Golgi phosphoprotein 3 antibody, Golgi protein antibody, GOLP3_HUMAN antibody, Golph3 antibody, GOPP1 antibody, GPP34 antibody, MIDAS antibody, Mitochondrial DNA absence factor antibody

UniProt: [Q9H4A6](#)

Application Details

Application Notes: Recommended dilution: WB:1:500-1:5000, IHC:1:20-1:200, IF:1:20-1:200, IP:1:200-1:2000,

Restrictions: For Research Use only

Handling

Format: Liquid

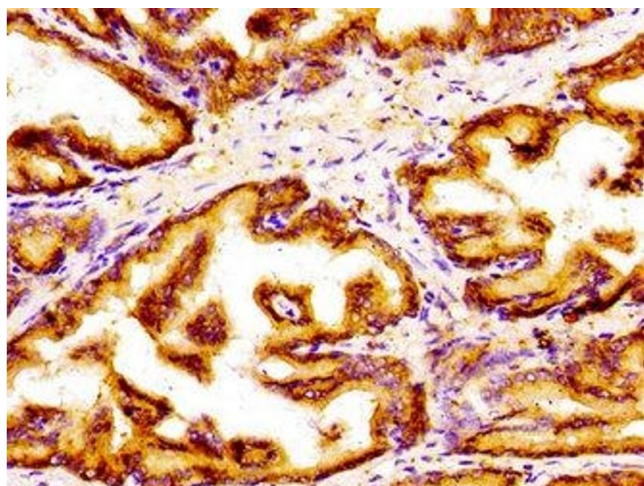
Buffer: Preservative: 0.03 % Proclin 300
Constituents: 50 % Glycerol, 0.01M PBS, pH 7.4

Preservative: ProClin

Precaution of Use: This product contains ProClin: a POISONOUS AND HAZARDOUS SUBSTANCE which should be handled by trained staff only.

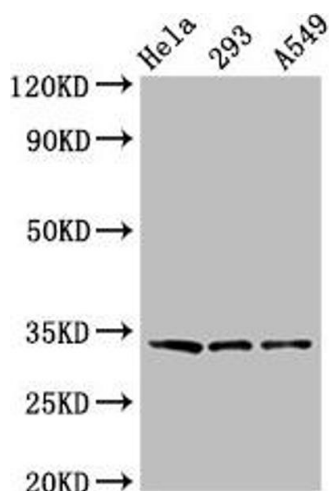
Storage: -20 °C,-80 °C

Storage Comment: Upon receipt, store at -20°C or -80°C. Avoid repeated freeze.



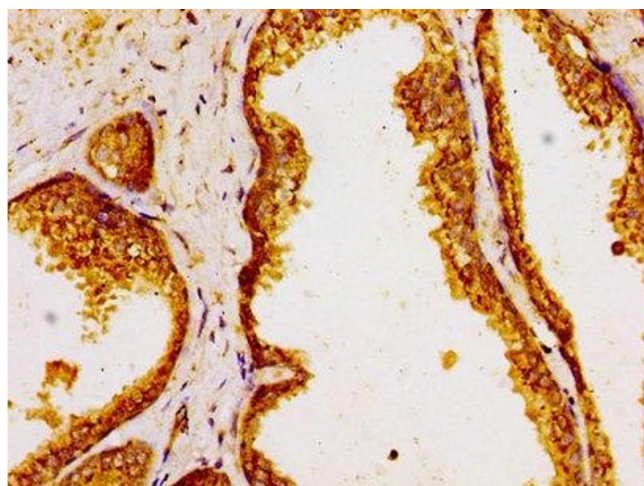
Immunohistochemistry

Image 1. Immunohistochemistry of paraffin-embedded human prostate tissue using ABIN7154296 at dilution of 1:100



Western Blotting

Image 2. Western Blot Positive WB detected in: HeLa whole cell lysate, 293 whole cell lysate, A549 whole cell lysate All lanes: GOLPH3 antibody at 3.2 µg/mL Secondary Goat polyclonal to rabbit IgG at 1/50000 dilution Predicted band size: 34 kDa Observed band size: 34 kDa



Immunohistochemistry

Image 3. Immunohistochemistry of paraffin-embedded human prostate cancer using ABIN7154296 at dilution of 1:100

Please check the [product details page](#) for more images. Overall 5 images are available for ABIN7154296.