

Datasheet for ABIN7154312
anti-GS28 antibody (AA 1-115)

3 Images

[Go to Product page](#)

Overview

Quantity:	100 µL
Target:	GS28 (GOSR1)
Binding Specificity:	AA 1-115
Reactivity:	Human
Host:	Rabbit
Clonality:	Polyclonal
Conjugate:	This GS28 antibody is un-conjugated
Application:	Western Blotting (WB), ELISA, Immunohistochemistry (IHC)

Product Details

Immunogen:	Recombinant Human Golgi SNAP receptor complex member 1 protein (1-115AA)
Isotype:	IgG
Cross-Reactivity:	Human, Mouse
Purification:	Antigen Affinity Purified

Target Details

Target:	GS28 (GOSR1)
Alternative Name:	GOSR1 (GOSR1 Products)
Background:	Background: Involved in transport from the ER to the Golgi apparatus as well as in intra-Golgi transport. It belongs to a super-family of proteins called t-SNAREs or soluble NSF (N-

Target Details

ethylmaleimide-sensitive factor) attachment protein receptor. May play a protective role against hydrogen peroxide induced cytotoxicity under glutathione depleted conditions in neuronal cells by regulating the intracellular ROS levels via inhibition of p38 MAPK (MAPK11, MAPK12, MAPK13 and MAPK14). Participates in docking and fusion stage of ER to cis-Golgi transport. Plays an important physiological role in VLDL-transport vesicle-Golgi fusion and thus in VLDL delivery to the hepatic cis-Golgi.

Aliases: GOSR1 antibody, GS28Golgi SNAP receptor complex member 1 antibody, 28 kDa Golgi SNARE protein antibody, 28 kDa cis-Golgi SNARE p28 antibody, GOS-28 antibody

UniProt: [O95249](#)

Application Details

Application Notes: Recommended dilution: WB:1:500-1:2000, IHC:1:20-1:200,

Restrictions: For Research Use only

Handling

Format: Liquid

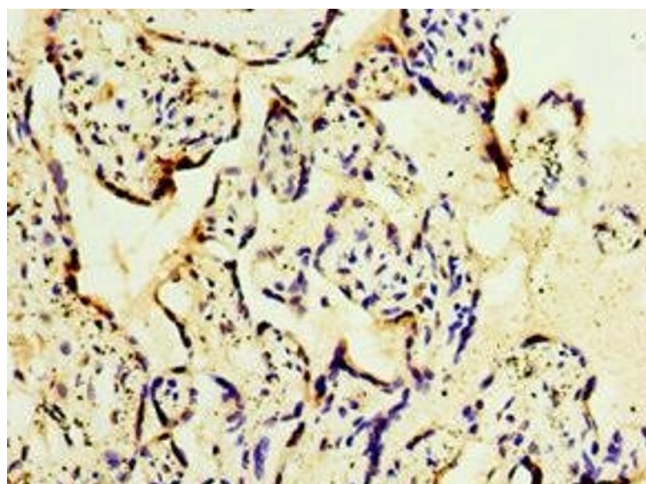
Buffer: PBS with 0.02 % sodium azide, 50 % glycerol, pH 7.3.

Preservative: Sodium azide

Precaution of Use: This product contains Sodium azide: a POISONOUS AND HAZARDOUS SUBSTANCE which should be handled by trained staff only.

Storage: -20 °C, -80 °C

Storage Comment: Upon receipt, store at -20°C or -80°C. Avoid repeated freeze.



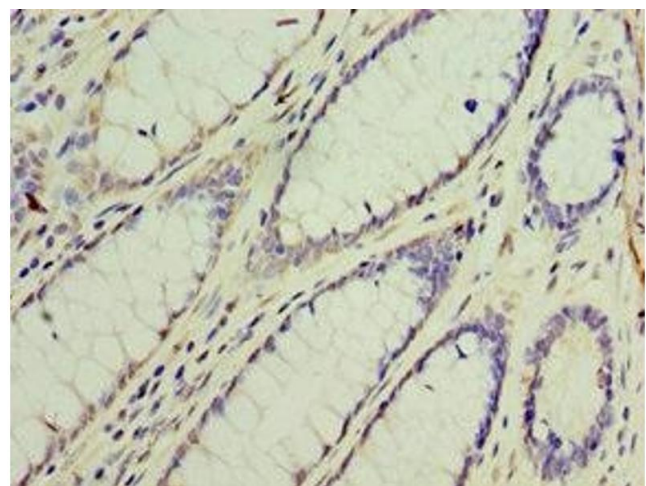
Immunohistochemistry

Image 1. Immunohistochemistry of paraffin-embedded human placenta tissue using ABIN7154312 at dilution of 1:100



Western Blotting

Image 2. Western blot All lanes: GOSR1 antibody at 16 μ g/mL + Mouse liver tissue Secondary Goat polyclonal to rabbit IgG at 1/10000 dilution Predicted band size: 29, 22 kDa Observed band size: 29 kDa



Immunohistochemistry

Image 3. Immunohistochemistry of paraffin-embedded human colon cancer using ABIN7154312 at dilution of 1:100