



Datasheet for ABIN7154317
anti-GOPC antibody (AA 203-462)



[Go to Product page](#)

2 Images

Overview

| | |
|----------------------|--|
| Quantity: | 100 µL |
| Target: | GOPC |
| Binding Specificity: | AA 203-462 |
| Reactivity: | Human |
| Host: | Rabbit |
| Clonality: | Polyclonal |
| Conjugate: | This GOPC antibody is un-conjugated |
| Application: | Western Blotting (WB), Immunohistochemistry (IHC), ELISA |

Product Details

| | |
|-------------------|---|
| Immunogen: | Recombinant Human Golgi-associated PDZ and coiled-coil motif-containing protein (203-462AA) |
| Isotype: | IgG |
| Cross-Reactivity: | Human |
| Purification: | Antigen Affinity Purified |

Target Details

| | |
|-------------------|--|
| Target: | GOPC |
| Alternative Name: | GOPC (GOPC Products) |
| Background: | Background: Plays a role in intracellular protein trafficking and degradation. May regulate CFTR |

Target Details

chloride currents and acid-induced ASIC3 currents by modulating cell surface expression of both channels. May also regulate the intracellular trafficking of the ADR1B receptor. May play a role in autophagy. Overexpression results in CFTR intracellular retention and degradation in the lysosomes.

Aliases: CAL antibody, CFTR associated ligand antibody, CFTR-associated ligand antibody, dJ94G16.2 antibody, dJ94G16.2 PIST antibody, FIG antibody, Fused in glioblastoma antibody, Golgi associated PDZ and coiled coil motif containing antibody, Golgi associated PDZ and coiled coil motif containing protein antibody, Golgi-associated PDZ and coiled-coil motif-containing protein antibody, GOPC 1 antibody, GOPC antibody, GOPC_HUMAN antibody, GOPC1 antibody, OTTHUMP00000040403 antibody, PDZ protein interacting specifically with TC 10 antibody, PDZ protein interacting specifically with TC10 antibody, PDZ/coiled coil domain binding partner for the rho family GTPase TC 10 antibody, PDZ/coiled coil domain binding partner for the rho family GTPase TC10 antibody, PIST antibody, Protein interacting specifically with Tc 10 antibody, Protein interacting specifically with Tc10 antibody

UniProt: [Q9HD26](#)

Pathways: [Maintenance of Protein Location, Asymmetric Protein Localization](#)

Application Details

Application Notes: Recommended dilution: WB:1:500-1:5000, IHC:1:20-1:200,

Restrictions: For Research Use only

Handling

Format: Liquid

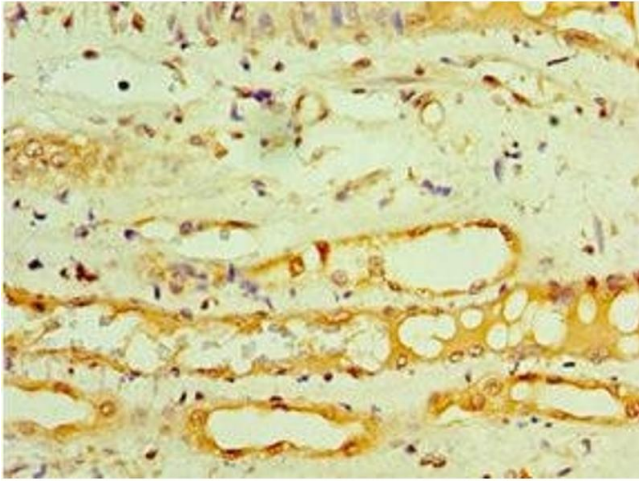
Buffer: PBS with 0.02 % sodium azide, 50 % glycerol, pH 7.3.

Preservative: Sodium azide

Precaution of Use: This product contains Sodium azide: a POISONOUS AND HAZARDOUS SUBSTANCE which should be handled by trained staff only.

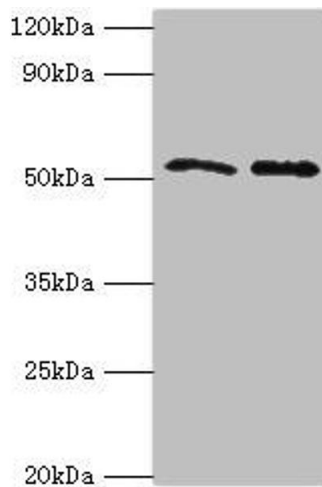
Storage: -20 °C,-80 °C

Storage Comment: Upon receipt, store at -20°C or -80°C. Avoid repeated freeze.



Immunohistochemistry

Image 1. Immunohistochemistry of paraffin-embedded human kidney tissue using ABIN7154317 at dilution of 1:100



Western Blotting

Image 2. Western blot All lanes: GOPC antibody at 4 μ g/mL
Lane 1: K562 whole cell lysate Lane 2: HepG2 whole cell lysate
Secondary Goat polyclonal to rabbit IgG at 1/10000 dilution
Predicted band size: 51, 50, 36 kDa Observed band size: 51 kDa