

Datasheet for ABIN7154318
anti-GLIPR2 antibody (AA 2-85)[Go to Product page](#)

1 Image

Overview

Quantity:	100 µg
Target:	GLIPR2
Binding Specificity:	AA 2-85
Reactivity:	Human
Host:	Rabbit
Clonality:	Polyclonal
Conjugate:	This GLIPR2 antibody is un-conjugated
Application:	ELISA, Immunohistochemistry (IHC)

Product Details

Immunogen:	Recombinant Human Golgi-associated plant pathogenesis-related protein 1 protein (2-85AA)
Isotype:	IgG
Cross-Reactivity:	Human
Purification:	>95%, Protein G purified

Target Details

Target:	GLIPR2
Alternative Name:	GLIPR2 (GLIPR2 Products)
Background:	Background: extracellular exosome, Golgi membrane, protein homodimerization activity, positive regulation of epithelial cell migration, positive regulation of epithelial to mesenchymal

Target Details

transition, positive regulation of ERK1 and ERK2 cascade

Aliases: 5730414A08Rik antibody, C77180 antibody, C9orf19 antibody, GAPR 1 antibody, GAPR-1 antibody, GAPR1_HUMAN antibody, GLI pathogenesis related 2 antibody, Glioma pathogenesis related protein 2 antibody, Glioma pathogenesis-related protein 2 antibody, GliPR 2 antibody, GLIPR2 antibody, Golgi associated plant pathogenesis related protein 1 antibody, Golgi associated PR 1 protein antibody, Golgi-associated plant pathogenesis-related protein 1 antibody, Golgi-associated PR-1 protein antibody, OTTMUSP00000007558 antibody, RP11-421H8.5 antibody, RP23-209M8.2 antibody

UniProt: [Q9H4G4](#)

Application Details

Application Notes: Recommended dilution: IHC:1:500-1:1000,

Restrictions: For Research Use only

Handling

Format: Liquid

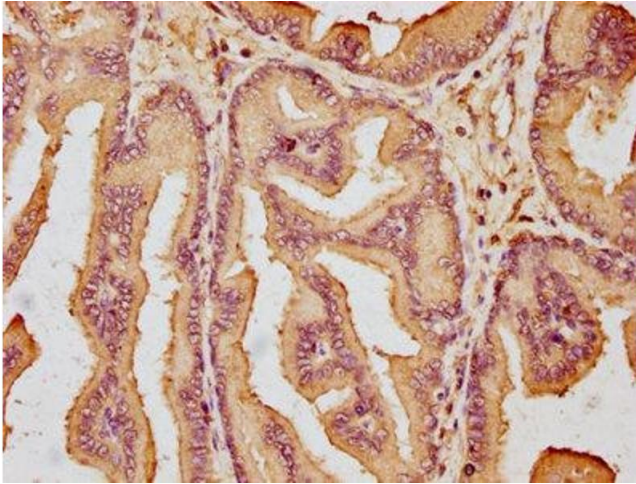
Buffer: Preservative: 0.03 % Proclin 300
Constituents: 50 % Glycerol, 0.01M PBS, PH 7.4

Preservative: ProClin

Precaution of Use: This product contains ProClin: a POISONOUS AND HAZARDOUS SUBSTANCE which should be handled by trained staff only.

Storage: -20 °C,-80 °C

Storage Comment: Upon receipt, store at -20°C or -80°C. Avoid repeated freeze.



Immunohistochemistry

Image 1. IHC image of ABIN7154318 diluted at 1:600 and staining in paraffin-embedded human prostate tissue performed on a Leica Bond™ system. After dewaxing and hydration, antigen retrieval was mediated by high pressure in a citrate buffer (pH 6.0). Section was blocked with 10% normal goat serum 30min at RT. Then primary antibody (1% BSA) was incubated at 4°C overnight. The primary is detected by a biotinylated secondary antibody and visualized using an HRP conjugated SP system.