

Datasheet for ABIN7154328

**anti-Golgin B1 (GOLGB1) (AA 1764-1869) antibody**[Go to Product page](#)**2** Images

## Overview

Quantity:	100 µL
Target:	Golgin B1 (GOLGB1)
Binding Specificity:	AA 1764-1869
Reactivity:	Human
Host:	Rabbit
Clonality:	Polyclonal
Conjugate:	Un-conjugated
Application:	ELISA, Immunohistochemistry (IHC), Immunofluorescence (IF)

## Product Details

Immunogen:	Recombinant Human Golgin subfamily B member 1 protein (1764-1869AA)
Isotype:	IgG
Cross-Reactivity:	Human
Purification:	>95%, Protein G purified

## Target Details

Target:	Golgin B1 (GOLGB1)
Alternative Name:	GOLGB1 ( <a href="#">GOLGB1 Products</a> )
Background:	Background: May participate in forming intercisternal cross-bridges of the Golgi complex. Aliases: 372 kDa Golgi complex associated protein antibody, 372 kDa Golgi complex-associated

## Target Details

protein antibody, GCP antibody, GCP372 antibody, Giantin antibody, GOGB1\_HUMAN antibody, GOLGB1 antibody, Golgi autoantigen golgin subfamily a member 1 antibody, Golgi autoantigen golgin subfamily b macrogolgin (with transmembrane signal) 1 antibody, Golgi autoantigen, golgin subfamily b, macrogolgin 1 antibody, Golgi complex associated protein 372 kDa antibody, Golgi complex-associated protein 372 kDa antibody, Golgin B1 antibody, Golgin B1, golgi integral membrane protein antibody, Golgin subfamily B member 1 antibody, GOLIM1 antibody, Macrogolgin antibody, MGC33154 antibody

UniProt: [Q14789](#)

Pathways: [SARS-CoV-2 Protein Interactome](#)

## Application Details

Application Notes: Recommended dilution: IHC:1:200-1:500, IF:1:50-1:200,

Restrictions: For Research Use only

## Handling

Format: Liquid

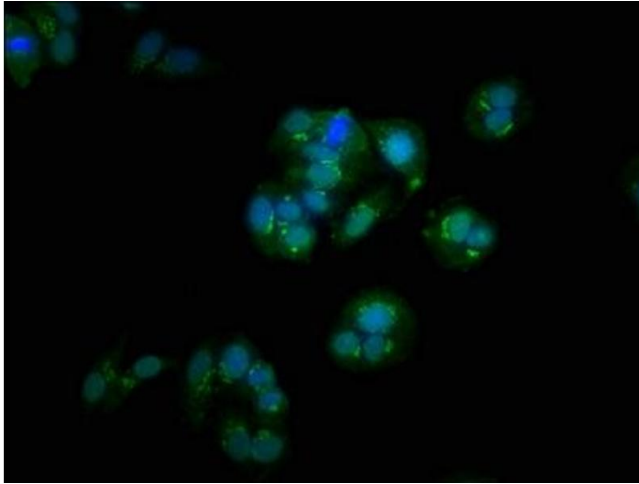
Buffer: Preservative: 0.03 % Proclin 300  
Constituents: 50 % Glycerol, 0.01M PBS, pH 7.4

Preservative: ProClin

Precaution of Use: This product contains ProClin: a POISONOUS AND HAZARDOUS SUBSTANCE which should be handled by trained staff only.

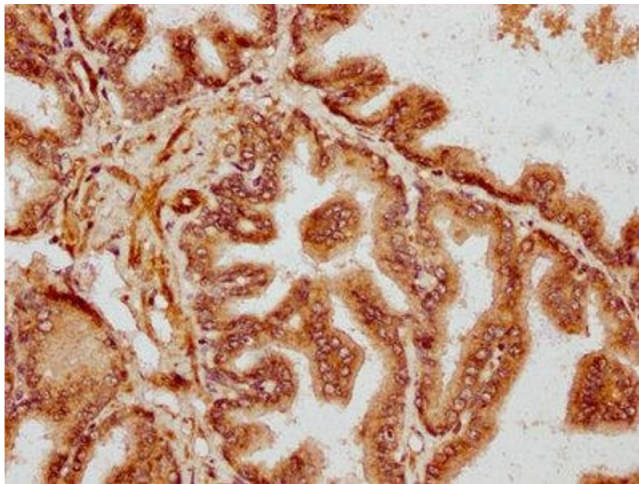
Storage: -20 °C, -80 °C

Storage Comment: Upon receipt, store at -20°C or -80°C. Avoid repeated freeze.



#### Immunofluorescence

**Image 1.** Immunofluorescence staining of HepG2 cells with ABIN7154328 at 1:100, counter-stained with DAPI. The cells were fixed in 4% formaldehyde, permeabilized using 0.2% Triton X-100 and blocked in 10% normal Goat Serum. The cells were then incubated with the antibody overnight at 4°C. The secondary antibody was Alexa Fluor 488-conjugated AffiniPure Goat Anti-Rabbit IgG(H+L).



#### Immunohistochemistry

**Image 2.** IHC image of ABIN7154328 diluted at 1:300 and staining in paraffin-embedded human prostate tissue performed on a Leica Bond™ system. After dewaxing and hydration, antigen retrieval was mediated by high pressure in a citrate buffer (pH 6.0). Section was blocked with 10% normal goat serum 30min at RT. Then primary antibody (1% BSA) was incubated at 4°C overnight. The primary is detected by a biotinylated secondary antibody and visualized using an HRP conjugated SP system.