



[Go to Product page](#)

Datasheet for ABIN7154332
anti-BLZF1 antibody (AA 11-99)

3 Images

Overview

Quantity:	100 µg
Target:	BLZF1
Binding Specificity:	AA 11-99
Reactivity:	Human
Host:	Rabbit
Clonality:	Polyclonal
Conjugate:	This BLZF1 antibody is un-conjugated
Application:	Western Blotting (WB), ELISA, Immunohistochemistry (IHC)

Product Details

Immunogen:	Recombinant Human Golgin-45 protein (11-99AA)
Isotype:	IgG
Cross-Reactivity:	Human, Mouse
Purification:	>95%, Protein G purified

Target Details

Target:	BLZF1
Alternative Name:	BLZF1 (BLZF1 Products)
Background:	Background: Required for normal Golgi structure and for protein transport from the endoplasmic reticulum (ER) through the Golgi apparatus to the cell surface.

Target Details

Aliases: 1700030G05Rik antibody, basic leucine zipper nuclear factor 1 (JEM 1) antibody, Basic leucine zipper nuclear factor 1 antibody, BLZF1 antibody, Blzf1l antibody, GO45_HUMAN antibody, GOLGIN 45 antibody, Golgin-45 antibody, JEM 1 antibody, JEM 1s antibody, JEM-1 antibody, JEM1 antibody, MGC22497 antibody, p45 basic leucine zipper nuclear factor antibody, p45 basic leucine-zipper nuclear factor antibody

UniProt: [Q9H2G9](#)

Application Details

Application Notes: Recommended dilution: WB:1:500-1:5000, IHC:1:20-1:200,

Restrictions: For Research Use only

Handling

Format: Liquid

Buffer: Preservative: 0.03 % Proclin 300
Constituents: 50 % Glycerol, 0.01M PBS, pH 7.4

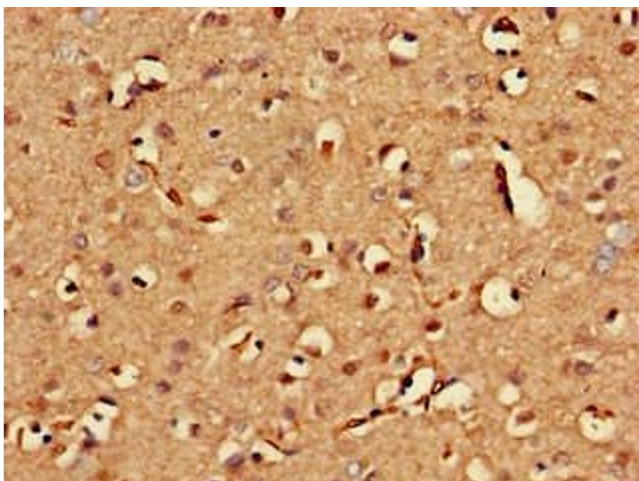
Preservative: ProClin

Precaution of Use: This product contains ProClin: a POISONOUS AND HAZARDOUS SUBSTANCE which should be handled by trained staff only.

Storage: -20 °C,-80 °C

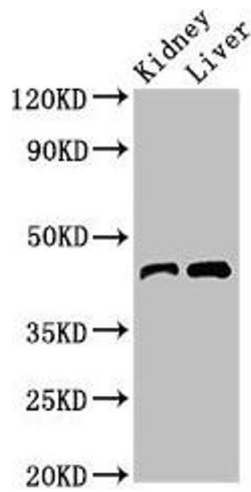
Storage Comment: Upon receipt, store at -20°C or -80°C. Avoid repeated freeze.

Images



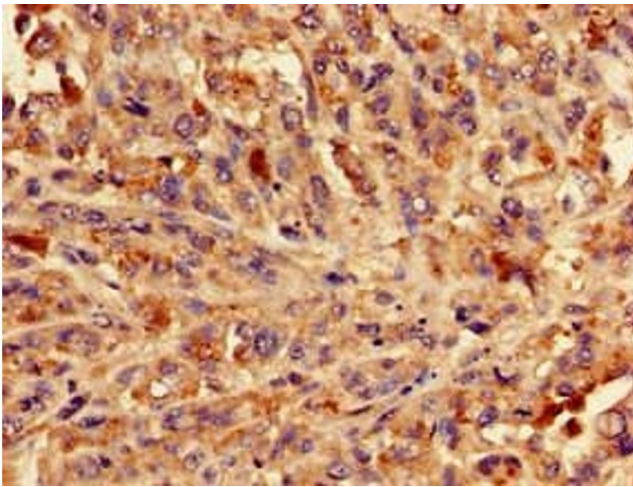
Immunohistochemistry

Image 1. Immunohistochemistry of paraffin-embedded human brain tissue using ABIN7154332 at dilution of 1:100



Western Blotting

Image 2. Western Blot Positive WB detected in: Mouse kidney tissue, Mouse liver tissue All lanes: BLZF1 antibody at 3 µg/mL Secondary Goat polyclonal to rabbit IgG at 1/50000 dilution Predicted band size: 45, 20 kDa Observed band size: 45 kDa



Immunohistochemistry

Image 3. Immunohistochemistry of paraffin-embedded human melanoma using ABIN7154332 at dilution of 1:100