

Datasheet for ABIN7154364
anti-ART1 antibody (AA 46-142)[Go to Product page](#)

1 Image

Overview

Quantity:	100 µL
Target:	ART1
Binding Specificity:	AA 46-142
Reactivity:	Human
Host:	Rabbit
Clonality:	Polyclonal
Conjugate:	This ART1 antibody is un-conjugated
Application:	ELISA, Immunohistochemistry (IHC)

Product Details

Immunogen:	Recombinant Human GPI-linked NAD(P)(+)-arginine ADP-ribosyltransferase 1 protein (46-142AA)
Isotype:	IgG
Cross-Reactivity:	Human
Purification:	>95%, Protein G purified

Target Details

Target:	ART1
Alternative Name:	ART1 (ART1 Products)
Background:	Background: Has ADP-ribosyltransferase activity toward GLP1R.

Target Details

Aliases: ART1GPI-linked NAD(P)(+)-arginine ADP-ribosyltransferase 1 antibody, EC 2.4.2.31 antibody, ADP-ribosyltransferase C2 and C3 toxin-like 1 antibody, ARTC1 antibody, Mono(ADP-ribosyl)transferase 1 antibody, CD antigen CD296 antibody

UniProt: [P52961](#)

Application Details

Application Notes: Recommended dilution: IHC:1:200-1:500,

Restrictions: For Research Use only

Handling

Format: Liquid

Buffer: Preservative: 0.03 % Proclin 300
Constituents: 50 % Glycerol, 0.01M PBS, pH 7.4

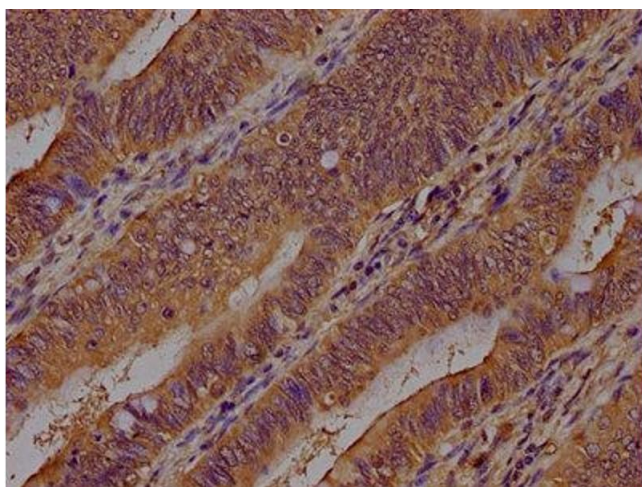
Preservative: ProClin

Precaution of Use: This product contains ProClin: a POISONOUS AND HAZARDOUS SUBSTANCE which should be handled by trained staff only.

Storage: -20 °C,-80 °C

Storage Comment: Upon receipt, store at -20°C or -80°C. Avoid repeated freeze.

Images



Immunohistochemistry

Image 1. IHC image of ABIN7154364 diluted at 1:400 and staining in paraffin-embedded human colon cancer performed on a Leica Bond™ system. After dewaxing and hydration, antigen retrieval was mediated by high pressure in a citrate buffer (pH 6.0). Section was blocked with 10 % normal goat serum 30 min at RT. Then primary antibody (1 % BSA) was incubated at 4 °C overnight. The primary is detected by a biotinylated secondary antibody and visualized using an HRP conjugated SP system.