

Datasheet for ABIN7154372
anti-GRHL1 antibody (AA 1-95)

3 Images

[Go to Product page](#)

Overview

Quantity:	100 µL
Target:	GRHL1
Binding Specificity:	AA 1-95
Reactivity:	Human
Host:	Rabbit
Clonality:	Polyclonal
Conjugate:	This GRHL1 antibody is un-conjugated
Application:	Western Blotting (WB), ELISA, Immunohistochemistry (IHC)

Product Details

Immunogen:	Recombinant Human Grainyhead-like protein 1 homologprotein (1-95AA)
Isotype:	IgG
Cross-Reactivity:	Human
Purification:	>95%, Protein G purified

Target Details

Target:	GRHL1
Alternative Name:	GRHL1 (GRHL1 Products)
Background:	Background: Transcription factor involved in epithelial development. Binds directly to the consensus DNA sequence 5'-AACCGGTT-3' (PubMed:12175488, PubMed:18288204).

Target Details

Important regulator of DSG1 in the context of hair anchorage and epidermal differentiation, participates in the maintenance of the skin barrier. There is no genetic interaction with GRHL3, no functional cooperativity due to diverse target gene selectivity during epithelia development (By similarity). Isoform 1 may function as an activator and isoform 2 as a repressor in tissues where both forms are expressed (PubMed:12175488).

Aliases: Grainyhead-like protein 1 homolog antibody, grhl1 antibody, GRHL1_HUMAN antibody, LBP32 antibody, Mammalian grainyhead antibody, MGR antibody, NH32 antibody, TFCP2L2 antibody, Transcription factor CP2-like 2 antibody, Transcription factor LBP-32 antibody

UniProt: [Q9NZI5](#)

Pathways: [Regulation of Lipid Metabolism by PPARalpha](#)

Application Details

Application Notes: Recommended dilution: WB:1:500-1:5000, IHC:1:200-1:500,

Restrictions: For Research Use only

Handling

Format: Liquid

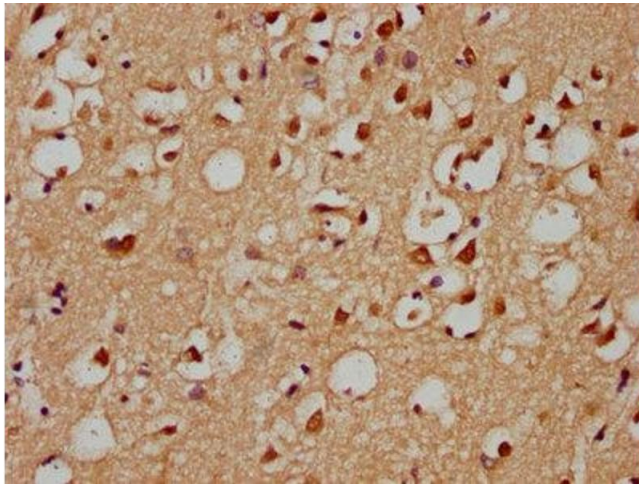
Buffer: Preservative: 0.03 % Proclin 300
Constituents: 50 % Glycerol, 0.01M PBS, pH 7.4

Preservative: ProClin

Precaution of Use: This product contains ProClin: a POISONOUS AND HAZARDOUS SUBSTANCE which should be handled by trained staff only.

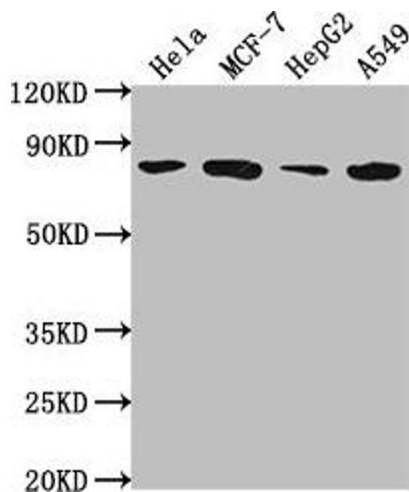
Storage: -20 °C, -80 °C

Storage Comment: Upon receipt, store at -20°C or -80°C. Avoid repeated freeze.



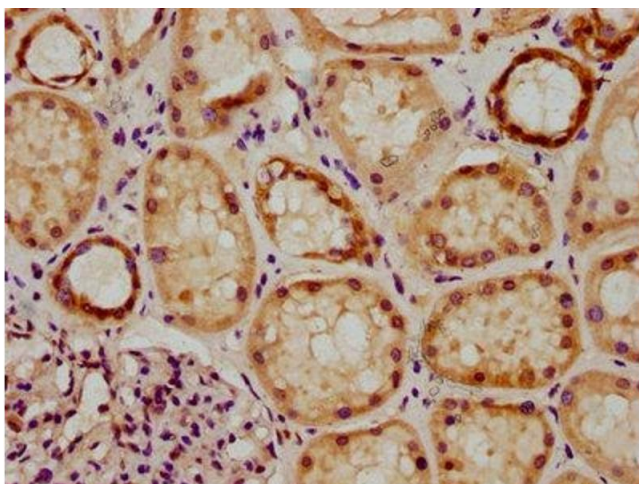
Immunohistochemistry

Image 1. IHC image of ABIN7154372 diluted at 1:300 and staining in paraffin-embedded human brain tissue performed on a Leica Bond™ system. After dewaxing and hydration, antigen retrieval was mediated by high pressure in a citrate buffer (pH 6.0). Section was blocked with 10 % normal goat serum 30 min at RT. Then primary antibody (1 % BSA) was incubated at 4 °C overnight. The primary is detected by a biotinylated secondary antibody and visualized using an HRP conjugated SP system.



Western Blotting

Image 2. Western Blot Positive WB detected in: HeLa whole cell lysate, MCF-7 whole cell lysate, HepG2 whole cell lysate, A549 whole cell lysate All lanes: GRHL1 antibody at 1:2000 Secondary Goat polyclonal to rabbit IgG at 1/50000 dilution Predicted band size: 71, 50, 58 kDa Observed band size: 71 kDa



Immunohistochemistry

Image 3. IHC image of ABIN7154372 diluted at 1:300 and staining in paraffin-embedded human kidney tissue performed on a Leica Bond™ system. After dewaxing and hydration, antigen retrieval was mediated by high pressure in a citrate buffer (pH 6.0). Section was blocked with 10 % normal goat serum 30 min at RT. Then primary antibody (1 % BSA) was incubated at 4 °C overnight. The primary is detected by a biotinylated secondary antibody and visualized using an HRP conjugated SP system.