



[Go to Product page](#)

Datasheet for ABIN7154376
anti-GRHL2 antibody (AA 1-265)

3 Images

Overview

Quantity:	100 µg
Target:	GRHL2
Binding Specificity:	AA 1-265
Reactivity:	Human
Host:	Rabbit
Clonality:	Polyclonal
Conjugate:	This GRHL2 antibody is un-conjugated
Application:	ELISA, Immunohistochemistry (IHC), Immunofluorescence (IF)

Product Details

Immunogen:	Recombinant Human Grainyhead-like protein 2 homolog protein (1-265AA)
Isotype:	IgG
Cross-Reactivity:	Human
Purification:	Antigen Affinity Purified

Target Details

Target:	GRHL2
Alternative Name:	GRHL2 (GRHL2 Products)
Background:	Background: Transcription factor playing an important role in primary neurulation and in epithelial development (PubMed:25152456). Binds directly to the consensus DNA sequence

Target Details

5'-AACCGGTT-3' acting as an activator and repressor on distinct target genes. During embryogenesis, plays unique and cooperative roles with GRHL3 in establishing distinct zones of primary neurulation. Essential for closure 3 (rostral end of the forebrain), functions cooperatively with GRHL3 in closure 2 (forebrain/midbrain boundary) and posterior neuropore closure. Regulates epithelial morphogenesis acting as a target gene-associated transcriptional activator of apical junctional complex components. Up-regulates of CLDN3 and CLDN4, as well as of RAB25, which increases the CLDN4 protein and its localization at tight junctions. Comprises an essential component of the transcriptional machinery that establishes appropriate expression levels of CLDN4 and CDH1 in different types of epithelia. Exhibits functional redundancy with GRHL3 in epidermal morphogenetic events and epidermal wound repair. In lung, forms a regulatory loop with NKX2-1 that coordinates lung epithelial cell morphogenesis and differentiation. In keratinocytes, plays a role in telomerase activation during cellular proliferation, regulates TERT expression by binding to TERT promoter region and inhibiting DNA methylation at the 5'-CpG island, possibly by interfering with DNMT1 enzyme activity (PubMed:19015635, PubMed:20938050). In addition, impairs keratinocyte differentiation and epidermal function by inhibiting the expression of genes clustered at the epidermal differentiation complex (EDC) as well as GRHL1 and GRHL3 through epigenetic mechanisms (PubMed:23254293).

Aliases: BOM antibody, Brother of mammalian grainyhead antibody, Deafness autosomal dominant 28 antibody, DFNA28 antibody, ECTDS antibody, FLJ11172 antibody, FLJ13782 antibody, Grainyhead like 2 (Drosophila) antibody, Grainyhead like 2 antibody, Grainyhead like protein 2 homolog antibody, Grainyhead like transcription factor 2 antibody, Grainyhead-like protein 2 homolog antibody, GRHL 2 antibody, GRHL2 antibody, GRHL2_HUMAN antibody, MGC149294 antibody, MGC149295 antibody, RGD1561191 antibody, TFCP2L3 antibody, Transcription factor CP2 like 3 antibody, Transcription factor CP2-like 3 antibody

UniProt: [Q6ISB3](#)

Pathways: [Tube Formation](#)

Application Details

Application Notes: Recommended dilution: IHC:1:20-1:200, IF:1:50-1:200,

Restrictions: For Research Use only

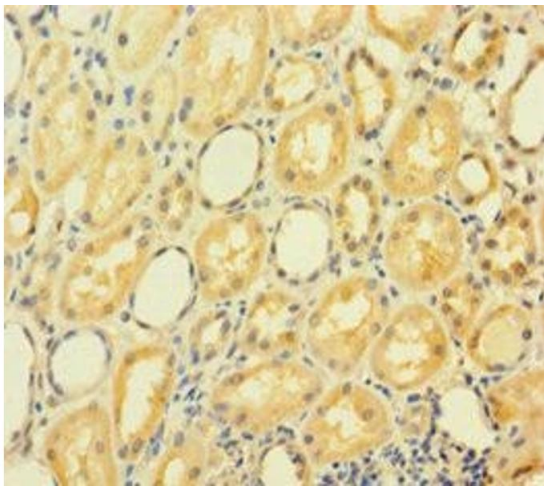
Handling

Format: Liquid

Handling

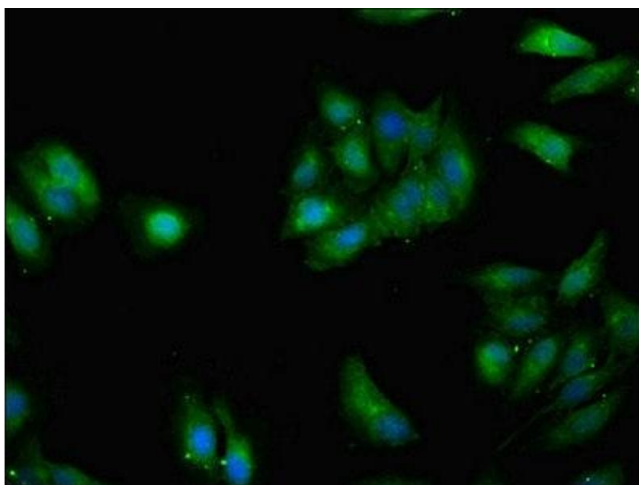
Buffer:	Preservative: 0.03 % Proclin 300 Constituents: 50 % Glycerol, 0.01M PBS, PH 7.4
Preservative:	ProClin
Precaution of Use:	This product contains ProClin: a POISONOUS AND HAZARDOUS SUBSTANCE which should be handled by trained staff only.
Storage:	-20 °C,-80 °C
Storage Comment:	Upon receipt, store at -20°C or -80°C. Avoid repeated freeze.

Images



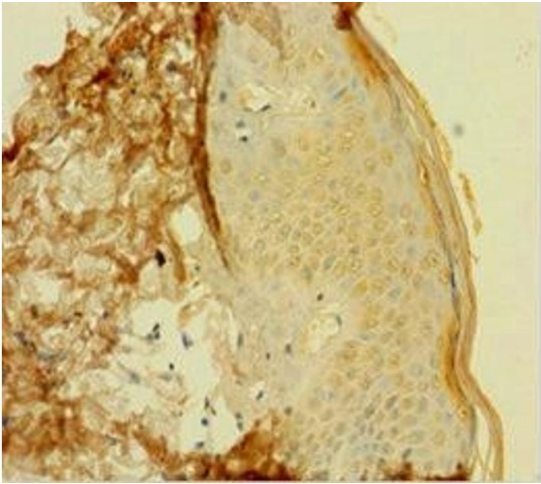
Immunohistochemistry

Image 1. Immunohistochemistry of paraffin-embedded human kidney tissue using ABIN7154376 at dilution of 1:100



Immunofluorescence

Image 2. Immunofluorescent analysis of HeLa cells using ABIN7154376 at dilution of 1:100 and Alexa Fluor 488-conjugated AffiniPure Goat Anti-Rabbit IgG(H+L)



Immunohistochemistry

Image 3. Immunohistochemistry of paraffin-embedded human skin tissue using ABIN7154376 at dilution of 1:100