



[Go to Product page](#)

Datasheet for ABIN7154415  
**anti-GZMB antibody (AA 21-247)**

3 Images

Overview

Quantity:	100 µg
Target:	GZMB
Binding Specificity:	AA 21-247
Reactivity:	Human
Host:	Rabbit
Clonality:	Polyclonal
Conjugate:	This GZMB antibody is un-conjugated
Application:	Immunohistochemistry (IHC), ELISA, Immunofluorescence (IF)

Product Details

Immunogen:	Recombinant Human Granzyme B protein (21-247AA)
Isotype:	IgG
Cross-Reactivity:	Human
Purification:	>95%, Protein G purified

Target Details

Target:	GZMB
Alternative Name:	GZMB ( <a href="#">GZMB Products</a> )
Background:	Background: This enzyme is necessary for target cell lysis in cell-mediated immune responses. It cleaves after Asp. Seems to be linked to an activation cascade of caspases (aspartate-

## Target Details

---

specific cysteine proteases) responsible for apoptosis execution. Cleaves caspase-3, -7, -9 and 10 to give rise to active enzymes mediating apoptosis.

Aliases: C11 antibody, Cathepsin G like 1 antibody, Cathepsin G-like 1 antibody, CCPI antibody, CGL 1 antibody, CGL1 antibody, CSP B antibody, CSPB antibody, CTLA 1 antibody, CTLA-1 antibody, CTLA1 antibody, CTSG1 antibody, Cytotoxic serine protease B antibody, Cytotoxic T lymphocyte associated serine esterase 1 antibody, Cytotoxic T lymphocyte proteinase 2 antibody, Cytotoxic T-lymphocyte proteinase 2 antibody, Fragmentin 2 antibody, Fragmentin-2 antibody, GRAB\_HUMAN antibody, Granzyme 2 antibody, Granzyme B (granzyme 2, cytotoxic T lymphocyte associated serine esterase 1) antibody, Granzyme B antibody, Granzyme-2 antibody, GranzymeB antibody, GRB antibody, Gzmb antibody, Hlp antibody, Human lymphocyte protein antibody, Lymphocyte protease antibody, Protease, serine, B antibody, SECT antibody, T cell serine protease 1 3E antibody, T cell serine protease 1-3E antibody, T-cell serine protease 1-3E antibody

---

UniProt: [P10144](#)

---

Pathways: [Apoptosis](#), [Caspase Cascade in Apoptosis](#)

## Application Details

---

Application Notes: Recommended dilution: IHC:1:500-1:1000, IF:1:200-1:500,

---

Restrictions: For Research Use only

## Handling

---

Format: Liquid

---

Buffer: Preservative: 0.03 % Proclin 300  
Constituents: 50 % Glycerol, 0.01M PBS, PH 7.4

---

Preservative: ProClin

---

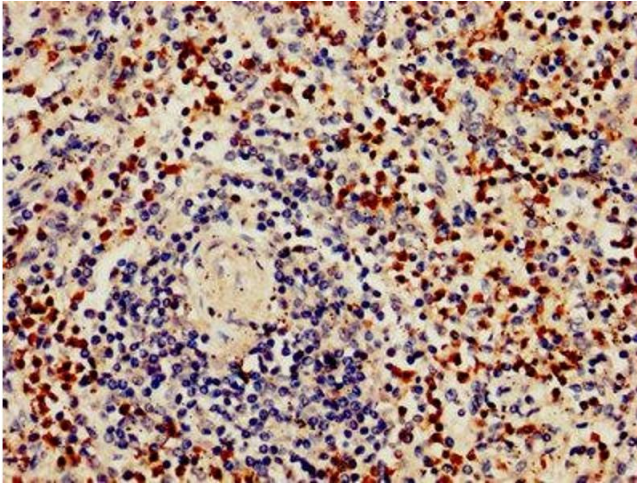
Precaution of Use: This product contains ProClin: a POISONOUS AND HAZARDOUS SUBSTANCE which should be handled by trained staff only.

---

Storage: -20 °C,-80 °C

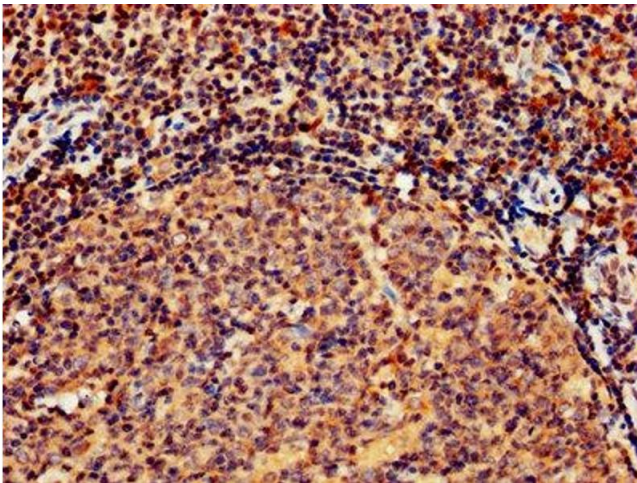
---

Storage Comment: Upon receipt, store at -20°C or -80°C. Avoid repeated freeze.



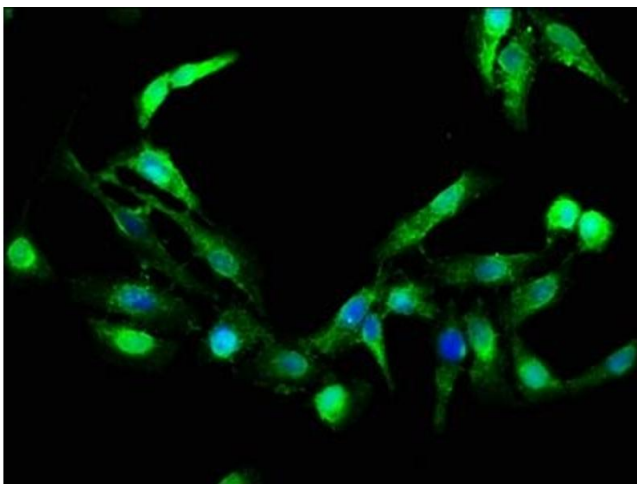
#### Immunohistochemistry

**Image 1.** IHC image of ABIN7154415 diluted at 1:800 and staining in paraffin-embedded human spleen tissue performed on a Leica Bond™ system. After dewaxing and hydration, antigen retrieval was mediated by high pressure in a citrate buffer (pH 6.0). Section was blocked with 10% normal goat serum 30min at RT. Then primary antibody (1% BSA) was incubated at 4°C overnight. The primary is detected by a biotinylated secondary antibody and visualized using an HRP conjugated SP system.



#### Immunohistochemistry

**Image 2.** IHC image of ABIN7154415 diluted at 1:800 and staining in paraffin-embedded human tonsil tissue performed on a Leica Bond™ system. After dewaxing and hydration, antigen retrieval was mediated by high pressure in a citrate buffer (pH 6.0). Section was blocked with 10% normal goat serum 30min at RT. Then primary antibody (1% BSA) was incubated at 4°C overnight. The primary is detected by a biotinylated secondary antibody and visualized using an HRP conjugated SP system.



#### Immunofluorescence

**Image 3.** Immunofluorescence staining of HeLa cells with ABIN7154415 at 1:266, counter-stained with DAPI. The cells were fixed in 4% formaldehyde, permeabilized using 0.2% Triton X-100 and blocked in 10% normal Goat Serum. The cells were then incubated with the antibody overnight at 4°C. The secondary antibody was Alexa Fluor 488-conjugated AffiniPure Goat Anti-Rabbit IgG(H+L).