



[Go to Product page](#)

Datasheet for ABIN7154440
anti-GRAP antibody (AA 1-217)

1 Image

Overview

Quantity:	100 µL
Target:	GRAP
Binding Specificity:	AA 1-217
Reactivity:	Human
Host:	Rabbit
Clonality:	Polyclonal
Conjugate:	This GRAP antibody is un-conjugated
Application:	ELISA, Immunohistochemistry (IHC)

Product Details

Immunogen:	Recombinant Human GRB2-related adapter protein (1-217AA)
Isotype:	IgG
Cross-Reactivity:	Human
Purification:	Antigen Affinity Purified

Target Details

Target:	GRAP
Alternative Name:	GRAP (GRAP Products)
Background:	Background: Couples signals from receptor and cytoplasmic tyrosine kinases to the Ras signaling pathway.

Target Details

Aliases: Grap antibody, GRAP_HUMAN antibody, GRB2 related adaptor protein antibody, GRB2-related adapter protein antibody, Growth factor receptor bound protein 2 related adaptor protein antibody, MGC64880 antibody, OTTHUMP00000065766 antibody

UniProt: [Q13588](#)

Application Details

Application Notes: Recommended dilution: IHC:1:20-1:200,

Restrictions: For Research Use only

Handling

Format: Liquid

Buffer: Preservative: 0.03 % Proclin 300
Constituents: 50 % Glycerol, 0.01M PBS, pH 7.4

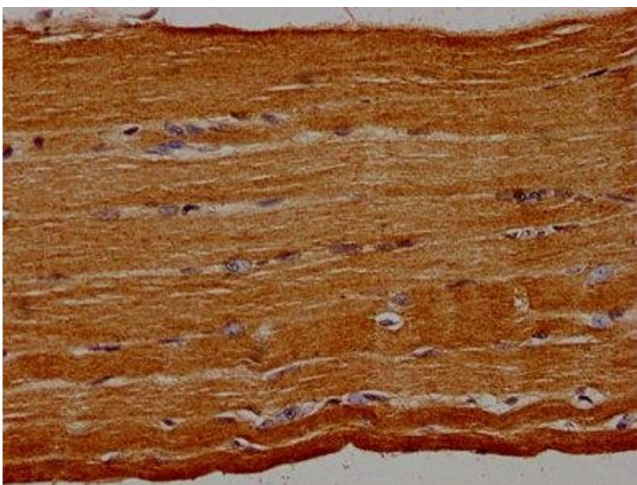
Preservative: ProClin

Precaution of Use: This product contains ProClin: a POISONOUS AND HAZARDOUS SUBSTANCE which should be handled by trained staff only.

Storage: -20 °C,-80 °C

Storage Comment: Upon receipt, store at -20°C or -80°C. Avoid repeated freeze.

Images



Immunohistochemistry

Image 1. IHC image of ABIN7154440 diluted at 1:30 and staining in paraffin-embedded human skeletal muscle tissue performed on a Leica Bond™ system. After dewaxing and hydration, antigen retrieval was mediated by high pressure in a citrate buffer (pH 6.0). Section was blocked with 10 % normal goat serum 30 min at RT. Then primary antibody (1 % BSA) was incubated at 4 °C overnight. The primary is detected by a biotinylated secondary antibody and visualized using an HRP conjugated SP system.