

Datasheet for ABIN7154448
anti-GREM1 antibody (AA 18-184)

2 Images

[Go to Product page](#)

Overview

| | |
|----------------------|--------------------------------------|
| Quantity: | 100 µg |
| Target: | GREM1 |
| Binding Specificity: | AA 18-184 |
| Reactivity: | Human |
| Host: | Rabbit |
| Clonality: | Polyclonal |
| Conjugate: | This GREM1 antibody is un-conjugated |
| Application: | Immunohistochemistry (IHC), ELISA |

Product Details

| | |
|-------------------|--|
| Immunogen: | Recombinant Human Gremlin-1 protein (18-184AA) |
| Isotype: | IgG |
| Cross-Reactivity: | Human |
| Purification: | >95%, Protein G purified |

Target Details

| | |
|-------------------|--|
| Target: | GREM1 |
| Alternative Name: | GREM1 (GREM1 Products) |
| Background: | Background: Cytokine that may play an important role during carcinogenesis and metanephric kidney organogenesis, as a BMP antagonist required for early limb outgrowth and patterning in |

Target Details

maintaining the FGF4-SHH feedback loop. Down-regulates the BMP4 signaling in a dose-dependent manner (By similarity). Antagonist of BMP2, inhibits BMP2-mediated differentiation of osteoblasts (in vitro) (PubMed:27036124). Acts as inhibitor of monocyte chemotaxis. Can inhibit the growth or viability of normal cells but not transformed cells when is overexpressed (By similarity).

Aliases: BMP antagonist 1 antibody, Cell proliferation inducing gene 2 protein antibody, Cell proliferation-inducing gene 2 protein antibody, CKTSF1B1 antibody, colorectal adenoma and carcinoma 1 antibody, Cysteine knot superfamily 1 antibody, Cysteine knot superfamily 1, BMP antagonist 1 antibody, Cysteine knot superfamily BMP antagonist 1 antibody, DAN domain family member 2 antibody, DAND2 antibody, Down regulated in Mos-transformed cells protein antibody, Down-regulated in Mos-transformed cells protein antibody, DRM antibody, grem1 antibody, GREM1_HUMAN antibody, Gremlin 1 homolog, cysteine knot superfamily antibody, Gremlin 1 like protein antibody, Gremlin 1, cysteine knot superfamily, homolog antibody, GREMLIN antibody, Gremlin-1 antibody, Gremlin1 antibody, IHG-2 antibody, IHG2 antibody, Increased in high glucose 2 antibody, Increased in high glucose protein 2 antibody, PIG2 antibody, Proliferation inducing gene 2 antibody, proliferation inducing gene 2 protein antibody

UniProt: [O60565](#)

Pathways: [Regulation of Muscle Cell Differentiation](#), [Tube Formation](#), [Maintenance of Protein Location](#)

Application Details

Application Notes: Recommended dilution: IHC:1:200-1:500,

Restrictions: For Research Use only

Handling

Format: Liquid

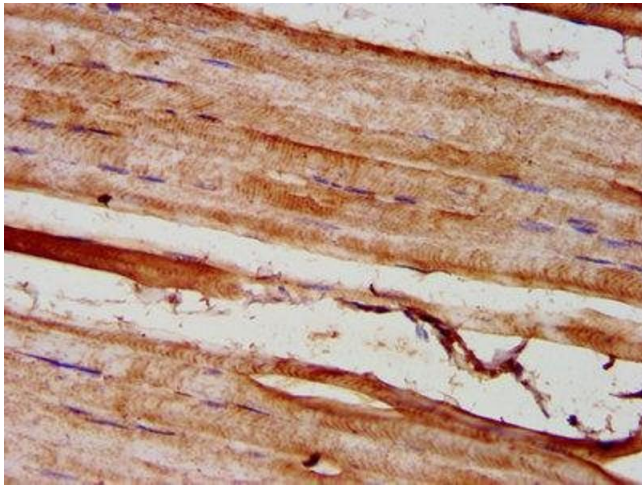
Buffer: Preservative: 0.03 % Proclin 300
Constituents: 50 % Glycerol, 0.01M PBS, pH 7.4

Preservative: ProClin

Precaution of Use: This product contains ProClin: a POISONOUS AND HAZARDOUS SUBSTANCE which should be handled by trained staff only.

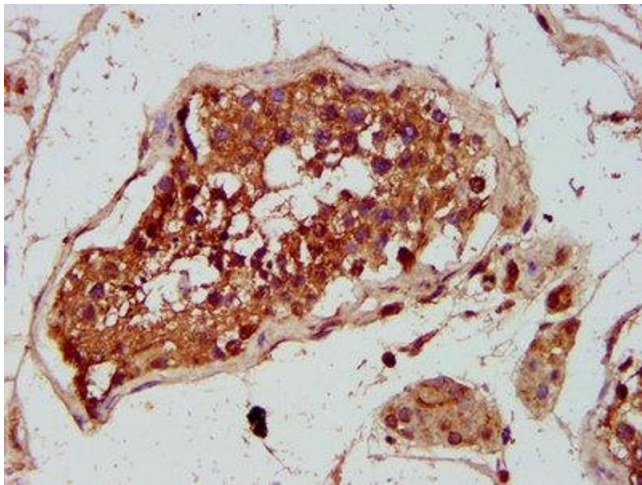
Storage: -20 °C,-80 °C

Storage Comment: Upon receipt, store at -20°C or -80°C. Avoid repeated freeze.



Immunohistochemistry

Image 1. IHC image of ABIN7154448 diluted at 1:300 and staining in paraffin-embedded human skeletal muscle tissue performed on a Leica Bond™ system. After dewaxing and hydration, antigen retrieval was mediated by high pressure in a citrate buffer (pH 6.0). Section was blocked with 10% normal goat serum 30min at RT. Then primary antibody (1% BSA) was incubated at 4°C overnight. The primary is detected by a biotinylated secondary antibody and visualized using an HRP conjugated SP system.



Immunohistochemistry

Image 2. IHC image of ABIN7154448 diluted at 1:300 and staining in paraffin-embedded human testis tissue performed on a Leica Bond™ system. After dewaxing and hydration, antigen retrieval was mediated by high pressure in a citrate buffer (pH 6.0). Section was blocked with 10% normal goat serum 30min at RT. Then primary antibody (1% BSA) was incubated at 4°C overnight. The primary is detected by a biotinylated secondary antibody and visualized using an HRP conjugated SP system.