

Datasheet for ABIN7154478  
**anti-GAS1 antibody (AA 248-318)**



[Go to Product page](#)

4 Images

## Overview

Quantity:	100 µg
Target:	GAS1
Binding Specificity:	AA 248-318
Reactivity:	Human
Host:	Rabbit
Clonality:	Polyclonal
Conjugate:	This GAS1 antibody is un-conjugated
Application:	Western Blotting (WB), ELISA, Immunohistochemistry (IHC), Immunofluorescence (IF)

## Product Details

Immunogen:	Recombinant Human Growth arrest-specific protein 1 protein (248-318AA)
Isotype:	IgG
Cross-Reactivity:	Human
Purification:	>95%, Protein G purified

## Target Details

Target:	GAS1
Alternative Name:	GAS1 ( <a href="#">GAS1 Products</a> )
Background:	Background: Specific growth arrest protein involved in growth suppression. Blocks entry to S phase. Prevents cycling of normal and transformed cells.

## Target Details

Aliases: GAS-1 antibody, Gas1 antibody, GAS1\_HUMAN antibody, Growth arrest-specific protein 1 antibody, Growth-arrest-specific protein 1 precursor antibody

UniProt: [P54826](#)

## Application Details

Application Notes: Recommended dilution: WB:1:500-1:5000, IHC:1:20-1:200, IF:1:50-1:200,

Restrictions: For Research Use only

## Handling

Format: Liquid

Buffer: Preservative: 0.03 % Proclin 300  
Constituents: 50 % Glycerol, 0.01M PBS, pH 7.4

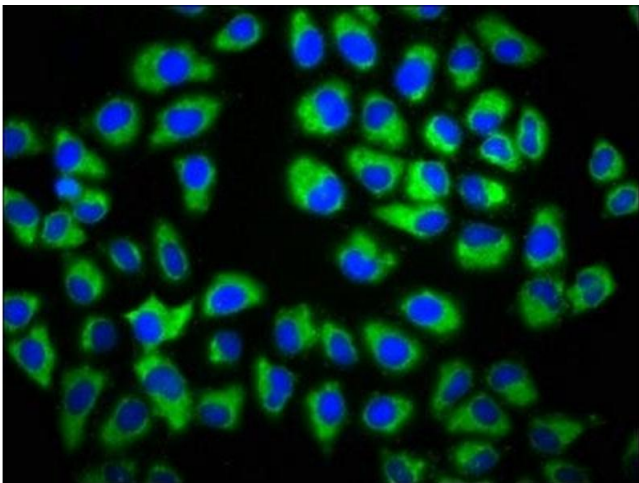
Preservative: ProClin

Precaution of Use: This product contains ProClin: a POISONOUS AND HAZARDOUS SUBSTANCE which should be handled by trained staff only.

Storage: -20 °C,-80 °C

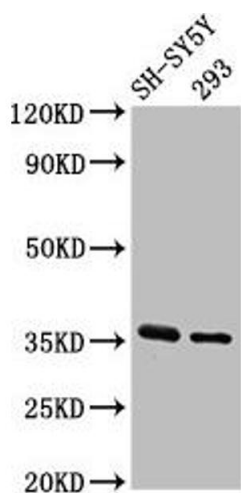
Storage Comment: Upon receipt, store at -20°C or -80°C. Avoid repeated freeze.

## Images



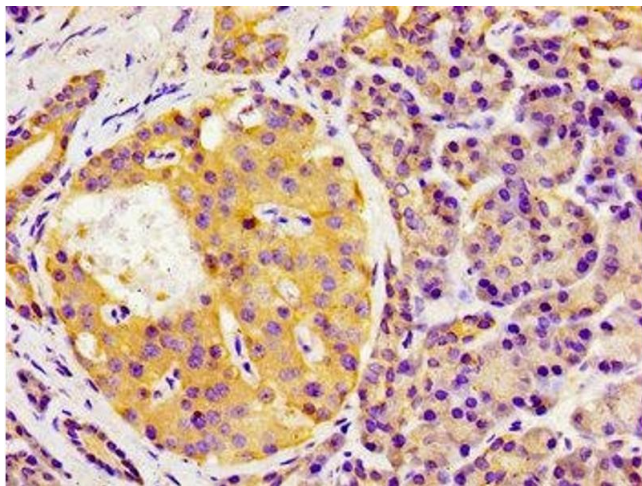
### Immunofluorescence

**Image 1.** Immunofluorescence staining of HeLa cells with ABIN7154478 at 1:133, counter-stained with DAPI. The cells were fixed in 4% formaldehyde, permeabilized using 0.2% Triton X-100 and blocked in 10% normal Goat Serum. The cells were then incubated with the antibody overnight at 4°C. The secondary antibody was Alexa Fluor 488-conjugated AffiniPure Goat Anti-Rabbit IgG(H+L).



#### Western Blotting

**Image 2.** Western Blot Positive WB detected in: SH-SY5Y whole cell lysate, 293 whole cell lysate All lanes: GAS1 antibody at 3.2 µg/mL Secondary Goat polyclonal to rabbit IgG at 1/50000 dilution Predicted band size: 36 kDa Observed band size: 36 kDa



#### Immunohistochemistry

**Image 3.** Immunohistochemistry of paraffin-embedded human pancreatic tissue using ABIN7154478 at dilution of 1:100

Please check the [product details page](#) for more images. Overall 4 images are available for ABIN7154478.