

Datasheet for ABIN7154482
anti-GAS2 antibody (AA 1-141)[Go to Product page](#)

2 Images

Overview

Quantity:	100 µg
Target:	GAS2
Binding Specificity:	AA 1-141
Reactivity:	Human
Host:	Rabbit
Clonality:	Polyclonal
Conjugate:	This GAS2 antibody is un-conjugated
Application:	Western Blotting (WB), ELISA, Immunohistochemistry (IHC)

Product Details

Immunogen:	Recombinant Human Growth arrest-specific protein 2 protein (1-141AA)
Isotype:	IgG
Cross-Reactivity:	Human, Rat
Purification:	>95%, Protein G purified

Target Details

Target:	GAS2
Alternative Name:	GAS2 (GAS2 Products)
Background:	Background: May play a role in apoptosis by acting as a cell death substrate for caspases. Is cleaved during apoptosis and the cleaved form induces dramatic rearrangements of the actin

Target Details

cytoskeleton and potent changes in the shape of the affected cells. May be involved in the membrane ruffling process.

Aliases: GAS 2 antibody, GAS-2 antibody, Gas2 antibody, GAS2_HUMAN antibody, Growth arrest specific 2 antibody, Growth arrest specific protein 2 antibody, Growth arrest-specific protein 2 antibody, MGC32610 antibody

UniProt: [O43903](#)

Pathways: [Caspase Cascade in Apoptosis](#)

Application Details

Application Notes: Recommended dilution: WB:1:500-1:5000, IHC:1:1000-1:2000,

Restrictions: For Research Use only

Handling

Format: Liquid

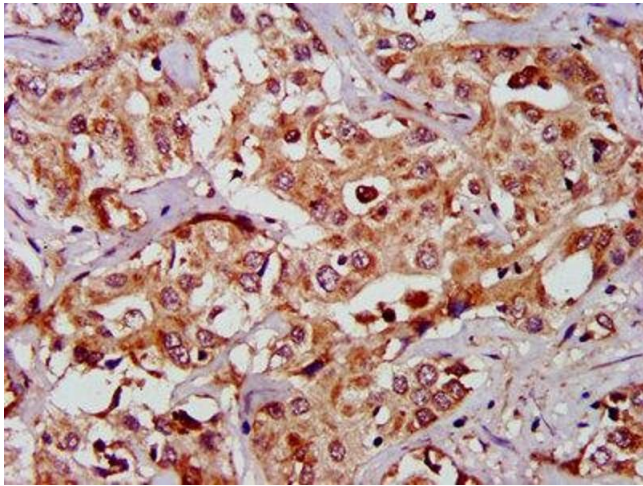
Buffer: Preservative: 0.03 % Proclin 300
Constituents: 50 % Glycerol, 0.01M PBS, PH 7.4

Preservative: ProClin

Precaution of Use: This product contains ProClin: a POISONOUS AND HAZARDOUS SUBSTANCE which should be handled by trained staff only.

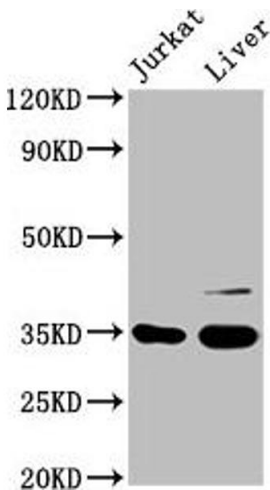
Storage: -20 °C, -80 °C

Storage Comment: Upon receipt, store at -20°C or -80°C. Avoid repeated freeze.



Immunohistochemistry

Image 1. IHC image of ABIN7154482 diluted at 1:1000 and staining in paraffin-embedded human liver cancer performed on a Leica Bond™ system. After dewaxing and hydration, antigen retrieval was mediated by high pressure in a citrate buffer (pH 6.0). Section was blocked with 10% normal goat serum 30min at RT. Then primary antibody (1% BSA) was incubated at 4°C overnight. The primary is detected by a biotinylated secondary antibody and visualized using an HRP conjugated SP system.



Western Blotting

Image 2. Western Blot Positive WB detected in: Jurkat whole cell lysate, Rat liver tissue All lanes: GAS2 antibody at 3.3 µg/mL Secondary Goat polyclonal to rabbit IgG at 1/50000 dilution Predicted band size: 35, 16 kDa Observed band size: 35 kDa