



[Go to Product page](#)

Datasheet for ABIN7154494
anti-PIK3R1 antibody (AA 15-180)

3 Images

Overview

Quantity:	100 µg
Target:	PIK3R1 (PI3K p85a)
Binding Specificity:	AA 15-180
Reactivity:	Human
Host:	Rabbit
Clonality:	Polyclonal
Conjugate:	This PIK3R1 antibody is un-conjugated
Application:	ELISA, Immunohistochemistry (IHC), Immunofluorescence (IF)

Product Details

Immunogen:	Recombinant Human Growth factor receptor-bound protein 10 protein (15-180AA)
Isotype:	IgG
Cross-Reactivity:	Human
Purification:	>95%, Protein G purified

Target Details

Target:	PIK3R1 (PI3K p85a)
Alternative Name:	GRB1 (PI3K p85a Products)
Background:	Background: Adapter protein which modulates coupling of a number of cell surface receptor kinases with specific signaling pathways. Binds to, and suppress signals from, activated

Target Details

receptors tyrosine kinases, including the insulin (INSR) and insulin-like growth factor (IGF1R) receptors. The inhibitory effect can be achieved by 2 mechanisms: interference with the signaling pathway and increased receptor degradation. Delays and reduces AKT1 phosphorylation in response to insulin stimulation. Blocks association between INSR and IRS1 and IRS2 and prevents insulin-stimulated IRS1 and IRS2 tyrosine phosphorylation. Recruits NEDD4 to IGF1R, leading to IGF1R ubiquitination, increased internalization and degradation by both the proteasomal and lysosomal pathways. May play a role in mediating insulin-stimulated ubiquitination of INSR, leading to proteasomal degradation. Negatively regulates Wnt signaling by interacting with LRP6 intracellular portion and interfering with the binding of AXIN1 to LRP6. Positive regulator of the KDR/VEGFR-2 signaling pathway. May inhibit NEDD4-mediated degradation of KDR/VEGFR-2.

Aliases: grb 10 antibody, GRB IR antibody, grb-10 antibody, GRB10 adapter protein antibody, GRB10 adaptor protein antibody, GRB10 antibody, GRB10_HUMAN antibody, GRBIR antibody, Growth factor receptor bound protein 10 antibody, Growth factor receptor-bound protein 10 antibody, Insulin receptor binding protein antibody, Insulin receptor binding protein GRB IR antibody, Insulin receptor-binding protein Grb-IR antibody, IRBP antibody, KIAA0207 antibody, Maternally expressed gene 1 antibody, MEG1 antibody, RSS antibody

UniProt: [Q13322](#)

Pathways: [TCR Signaling](#), [Response to Growth Hormone Stimulus](#), [Regulation of Muscle Cell Differentiation](#), [Skeletal Muscle Fiber Development](#), [Hepatitis C](#), [Protein targeting to Nucleus](#), [VEGF Signaling](#), [BCR Signaling](#), [Warburg Effect](#)

Application Details

Application Notes: Recommended dilution: IHC:1:20-1:200, IF:1:50-1:200,

Restrictions: For Research Use only

Handling

Format: Liquid

Buffer: Preservative: 0.03 % Proclin 300
Constituents: 50 % Glycerol, 0.01M PBS, pH 7.4

Preservative: ProClin

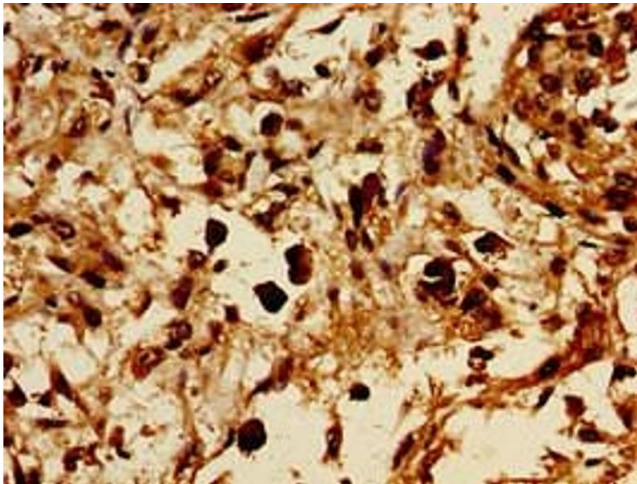
Precaution of Use: This product contains ProClin: a POISONOUS AND HAZARDOUS SUBSTANCE which should be handled by trained staff only.

Handling

Storage: -20 °C,-80 °C

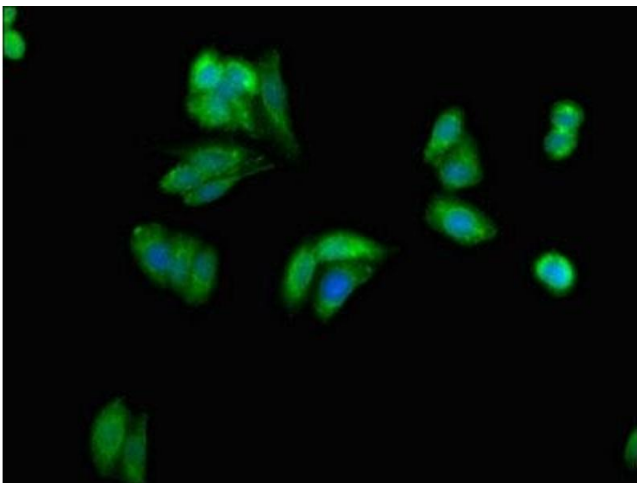
Storage Comment: Upon receipt, store at -20°C or -80°C. Avoid repeated freeze.

Images



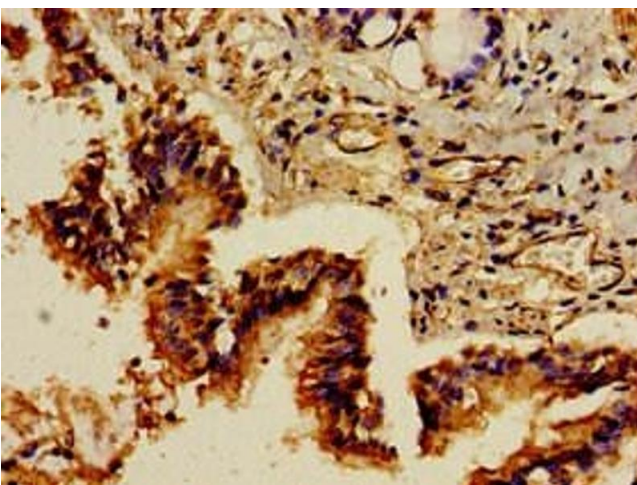
Immunohistochemistry

Image 1. Immunohistochemistry of paraffin-embedded human melanoma using ABIN7154494 at dilution of 1:100



Immunofluorescence

Image 2. Immunofluorescent analysis of HepG2 cells using ABIN7154494 at dilution of 1:100 and Alexa Fluor 488-conjugated AffiniPure Goat Anti-Rabbit IgG(H+L)



Immunohistochemistry

Image 3. Immunohistochemistry of paraffin-embedded human lung tissue using ABIN7154494 at dilution of 1:100