

Datasheet for ABIN7154521
anti-GHITM antibody (AA 293-345)[Go to Product page](#)

4 Images

Overview

Quantity:	100 µg
Target:	GHITM
Binding Specificity:	AA 293-345
Reactivity:	Human
Host:	Rabbit
Clonality:	Polyclonal
Conjugate:	This GHITM antibody is un-conjugated
Application:	ELISA, Western Blotting (WB), Immunohistochemistry (IHC), Immunofluorescence (IF)

Product Details

Immunogen:	Recombinant Human Growth hormone-inducible transmembrane protein (293-345AA)
Isotype:	IgG
Cross-Reactivity:	Human, Rat
Purification:	>95%, Protein G purified

Target Details

Target:	GHITM
Alternative Name:	GHITM (GHITM Products)
Background:	Background: Required for the mitochondrial tubular network and cristae organization. Involved in apoptotic release of cytochrome c.

Target Details

Aliases: Dermal papilla derived protein 2 antibody, Dermal papilla-derived protein 2 antibody, DERP2 antibody, Ghitm antibody, GHITM_HUMAN antibody, Growth hormone inducible transmembrane protein antibody, Growth hormone-inducible transmembrane protein antibody, HSPC282 antibody, MICS1 antibody, Mitochondrial morphology and cristae structure 1 antibody, My021 antibody, PTD010 antibody, TMBIM5 antibody, Transmembrane BAX inhibitor motif containing 5 antibody, Transmembrane BAX inhibitor motif containing protein 5 antibody, Transmembrane BAX inhibitor motif-containing protein 5 antibody

UniProt: [Q9H3K2](#)

Pathways: [SARS-CoV-2 Protein Interactome](#)

Application Details

Application Notes: Recommended dilution: WB:1:500-1:5000, IHC:1:200-1:500, IF:1:50-1:500,

Restrictions: For Research Use only

Handling

Format: Liquid

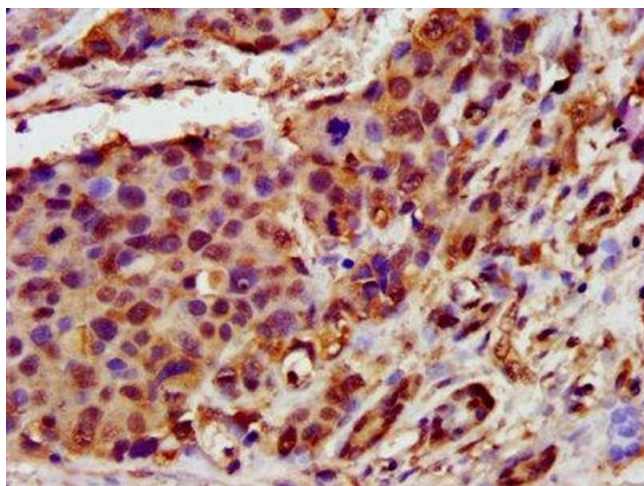
Buffer: Preservative: 0.03 % Proclin 300
Constituents: 50 % Glycerol, 0.01M PBS, PH 7.4

Preservative: ProClin

Precaution of Use: This product contains ProClin: a POISONOUS AND HAZARDOUS SUBSTANCE which should be handled by trained staff only.

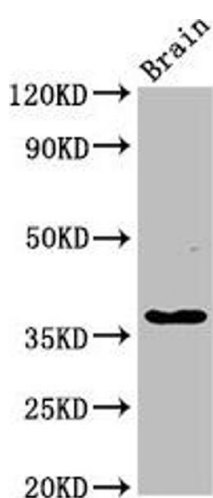
Storage: -20 °C,-80 °C

Storage Comment: Upon receipt, store at -20°C or -80°C. Avoid repeated freeze.



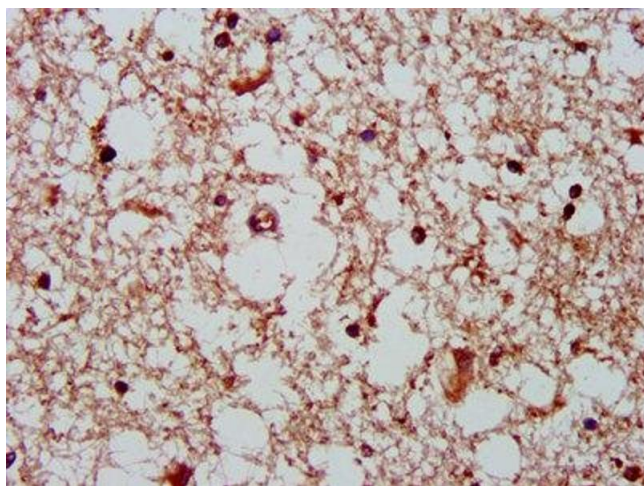
Immunohistochemistry

Image 1. IHC image of ABIN7154521 diluted at 1:400 and staining in paraffin-embedded human pancreatic cancer performed on a Leica Bond™ system. After dewaxing and hydration, antigen retrieval was mediated by high pressure in a citrate buffer (pH 6.0). Section was blocked with 10% normal goat serum 30min at RT. Then primary antibody (1% BSA) was incubated at 4°C overnight. The primary is detected by a biotinylated secondary antibody and visualized using an HRP conjugated SP system.



Western Blotting

Image 2. Western Blot Positive WB detected in: Rat brain tissue All lanes: GHITM antibody at 2.7 µg/mL Secondary Goat polyclonal to rabbit IgG at 1/50000 dilution Predicted band size: 38 kDa Observed band size: 38 kDa



Immunohistochemistry

Image 3. IHC image of ABIN7154521 diluted at 1:400 and staining in paraffin-embedded human brain tissue performed on a Leica Bond™ system. After dewaxing and hydration, antigen retrieval was mediated by high pressure in a citrate buffer (pH 6.0). Section was blocked with 10% normal goat serum 30min at RT. Then primary antibody (1% BSA) was incubated at 4°C overnight. The primary is detected by a biotinylated secondary antibody and visualized using an HRP conjugated SP system.

Please check the [product details page](#) for more images. Overall 4 images are available for ABIN7154521.