



[Go to Product page](#)

Datasheet for ABIN7154525  
**anti-GHRHR antibody (AA 23-127)**

2 Images

Overview

Quantity:	100 µg
Target:	GHRHR
Binding Specificity:	AA 23-127
Reactivity:	Human
Host:	Rabbit
Clonality:	Polyclonal
Conjugate:	This GHRHR antibody is un-conjugated
Application:	ELISA, Immunofluorescence (IF), Immunohistochemistry (IHC)

Product Details

Immunogen:	Recombinant Human Growth hormone-releasing hormone receptor protein (23-127AA)
Isotype:	IgG
Cross-Reactivity:	Human
Purification:	>95%, Protein G purified

Target Details

Target:	GHRHR
Alternative Name:	GHRHR ( <a href="#">GHRHR Products</a> )
Background:	Background: Receptor for GRF, coupled to G proteins which activate adenylyl cyclase. Stimulates somatotroph cell growth, growth hormone gene transcription and growth hormone

## Target Details

---

secretion.

Aliases: GHRFR antibody, GHRH R antibody, GHRH receptor antibody, Ghrhr antibody, GHRHR\_HUMAN antibody, GHRHRpsv antibody, GRF R antibody, GRF receptor antibody, GRFR antibody, Growth hormone releasing factor receptor antibody, Growth hormone releasing hormone receptor antibody, Growth hormone-releasing factor receptor antibody, Growth hormone-releasing hormone receptor antibody

---

UniProt: [Q02643](#)

---

Pathways: [Intracellular Steroid Hormone Receptor Signaling Pathway](#), [Hormone Transport](#), [Regulation of Intracellular Steroid Hormone Receptor Signaling](#), [cAMP Metabolic Process](#)

---

## Application Details

---

Application Notes: Recommended dilution: IHC:1:200-1:500, IF:1:50-1:200,

---

Restrictions: For Research Use only

---

## Handling

---

Format: Liquid

---

Buffer: Preservative: 0.03 % Proclin 300  
Constituents: 50 % Glycerol, 0.01M PBS, pH 7.4

---

Preservative: ProClin

---

Precaution of Use: This product contains ProClin: a POISONOUS AND HAZARDOUS SUBSTANCE which should be handled by trained staff only.

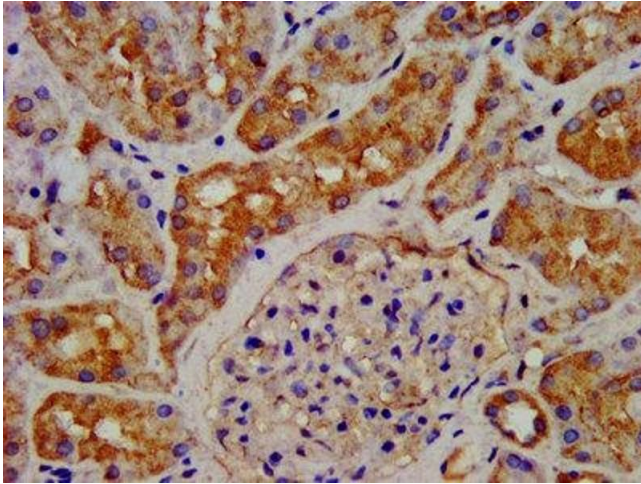
---

Storage: -20 °C,-80 °C

---

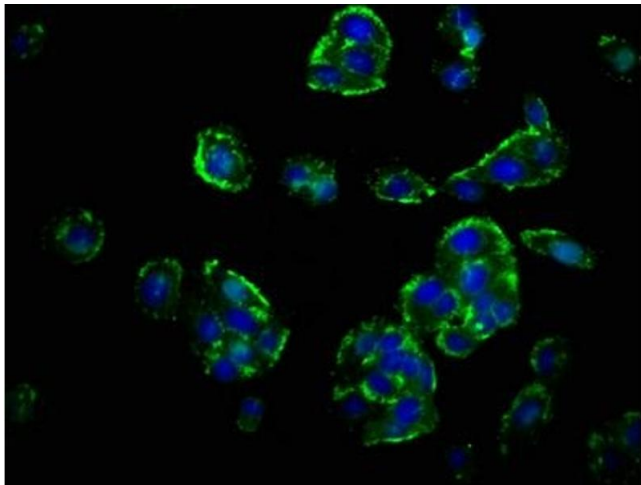
Storage Comment: Upon receipt, store at -20°C or -80°C. Avoid repeated freeze.

---



### Immunohistochemistry

**Image 1.** IHC image of ABIN7154525 diluted at 1:200 and staining in paraffin-embedded human kidney tissue performed on a Leica Bond™ system. After dewaxing and hydration, antigen retrieval was mediated by high pressure in a citrate buffer (pH 6.0). Section was blocked with 10% normal goat serum 30min at RT. Then primary antibody (1% BSA) was incubated at 4°C overnight. The primary is detected by a biotinylated secondary antibody and visualized using an HRP conjugated SP system.



### Immunofluorescence

**Image 2.** Immunofluorescence staining of HepG2 cells with ABIN7154525 at 1:67, counter-stained with DAPI. The cells were fixed in 4% formaldehyde, permeabilized using 0.2% Triton X-100 and blocked in 10% normal Goat Serum. The cells were then incubated with the antibody overnight at 4°C. The secondary antibody was Alexa Fluor 488-conjugated AffiniPure Goat Anti-Rabbit IgG(H+L).