

Datasheet for ABIN7154541
anti-GDF15 antibody (AA 198-308)[Go to Product page](#)

2 Images

Overview

Quantity:	100 µg
Target:	GDF15
Binding Specificity:	AA 198-308
Reactivity:	Human
Host:	Rabbit
Clonality:	Polyclonal
Conjugate:	This GDF15 antibody is un-conjugated
Application:	Western Blotting (WB), ELISA, Immunohistochemistry (IHC)

Product Details

Immunogen:	Recombinant Human Growth/differentiation factor 15 protein (198-308AA)
Isotype:	IgG
Cross-Reactivity:	Human
Purification:	>95%, Protein G purified

Target Details

Target:	GDF15
Alternative Name:	GDF15 (GDF15 Products)
Background:	Background: Growth differentiation factor-15 (GDF-15) is disclosed along with its polynucleotide sequence and amino acid sequence. Also disclosed are diagnostic and

Target Details

therapeutic methods of using the GDF-15 polypeptide and polynucleotide sequences

Aliases: GDF 15 antibody, GDF-15 antibody, Gdf15 antibody, GDF15_HUMAN antibody, Growth differentiation factor 15 antibody, Growth/differentiation factor 15 antibody, Macrophage inhibitory cytokine 1 antibody, MIC 1 antibody, Mic-1 antibody, MIC1 antibody, NAG 1 antibody, NAG-1 antibody, NAG1 antibody, NRG 1 antibody, NRG-1 antibody, NRG1 antibody, NSAID (nonsteroidal anti inflammatory drug) activated protein 1 antibody, NSAID antibody, NSAID regulated protein 1 antibody, NSAID-activated gene 1 protein antibody, NSAID-regulated gene 1 protein antibody, PDF antibody, PLAB antibody, Placental bone morphogenetic protein antibody, Placental bone morphogenic protein antibody, Placental TGF beta antibody, Placental TGF-beta antibody, Prostate differentiation factor antibody, PTGF beta antibody, PTGFB antibody

UniProt: [Q99988](#)

Pathways: [SARS-CoV-2 Protein Interactome](#)

Application Details

Application Notes: Recommended dilution: WB:1:1000-1:5000, IHC:1:20-1:200,

Restrictions: For Research Use only

Handling

Format: Liquid

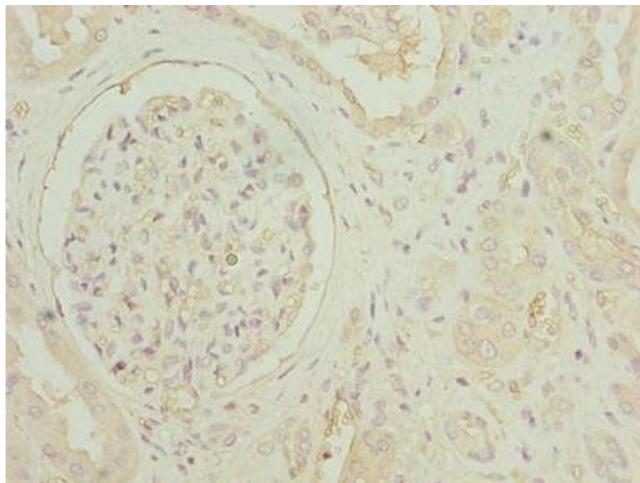
Buffer: Preservative: 0.03 % Proclin 300
Constituents: 50 % Glycerol, 0.01M PBS, PH 7.4

Preservative: ProClin

Precaution of Use: This product contains ProClin: a POISONOUS AND HAZARDOUS SUBSTANCE which should be handled by trained staff only.

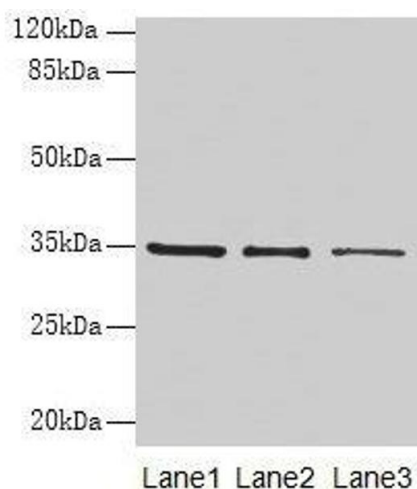
Storage: -20 °C,-80 °C

Storage Comment: Upon receipt, store at -20°C or -80°C. Avoid repeated freeze.



Immunohistochemistry

Image 1. Immunohistochemistry of paraffin-embedded human kidney tissue using ABIN7154541 at dilution of 1:100



Western Blotting

Image 2. Western blot All lanes: GDF15 antibody at 4 µg/mL
Lane 1: HepG2 whole cell lysate Lane 2: Human placenta tissue Lane 3: A549 whole cell lysate Secondary Goat polyclonal to rabbit IgG at 1/10000 dilution Predicted band size: 35 kDa Observed band size: 35 kDa