

Datasheet for ABIN7154549  
**anti-GDF5 antibody (AA 202-501)**

## 5 Images

[Go to Product page](#)

## Overview

Quantity:	100 µL
Target:	GDF5
Binding Specificity:	AA 202-501
Reactivity:	Human
Host:	Rabbit
Clonality:	Polyclonal
Conjugate:	This GDF5 antibody is un-conjugated
Application:	Western Blotting (WB), Immunohistochemistry (IHC), ELISA, Immunofluorescence (IF)

## Product Details

Immunogen:	Recombinant Human Growth/differentiation factor 5 protein (202-501AA)
Isotype:	IgG
Cross-Reactivity:	Human
Purification:	Antigen Affinity Purified

## Target Details

Target:	GDF5
Alternative Name:	GDF5 ( <a href="#">GDF5 Products</a> )
Background:	Background: Required to prevent excessive muscle loss upon denervation. This function requires SMAD4 and is mediated by phosphorylated SMAD1/5/8 (By similarity). Could be

## Target Details

involved in bone and cartilage formation. Chondrogenic signaling is mediated by the high-affinity receptor BMPR1B. Binds bacterial lipopolysaccharide (LPS) et mediates LPS-induced inflammatory response, including TNF secretion by monocytes.

Aliases: BMP14 antibody, Cartilage derived morphogenetic protein 1 antibody, Cartilage-derived morphogenetic protein 1 antibody, CDMP-1 antibody, CDMP1 antibody, GDF-5 antibody, Gdf5 antibody, GDF5\_HUMAN antibody, Growth differentiation factor 5 antibody, Growth/differentiation factor 5 antibody, LAP4 antibody, OS5 antibody, Radotermin antibody, SYNS2 antibody

UniProt: [P43026](#)

## Application Details

Application Notes: Recommended dilution: WB:1:500-1:5000, IHC:1:20-1:200, IF:1:20-1:200,

Restrictions: For Research Use only

## Handling

Format: Liquid

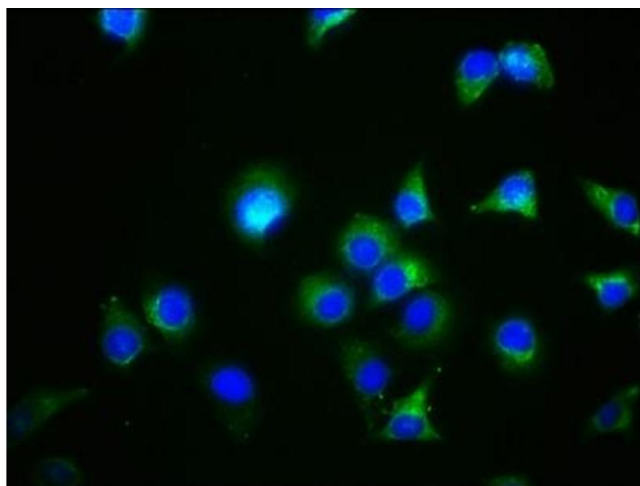
Buffer: PBS with 0.02 % sodium azide, 50 % glycerol, pH 7.3.

Preservative: Sodium azide

Precaution of Use: This product contains Sodium azide: a POISONOUS AND HAZARDOUS SUBSTANCE which should be handled by trained staff only.

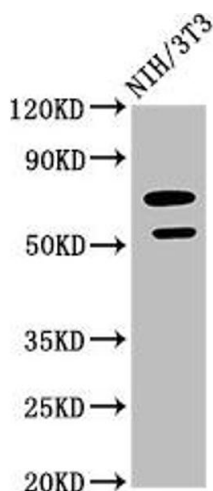
Storage: -20 °C, -80 °C

Storage Comment: Upon receipt, store at -20°C or -80°C. Avoid repeated freeze.



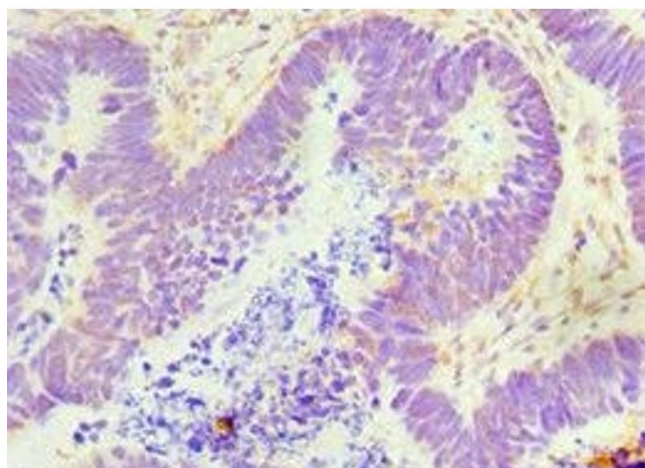
#### Immunofluorescence

**Image 1.** Immunofluorescence staining of A549 cells with ABIN7154549 at 1:44, counter-stained with DAPI. The cells were fixed in 4 % formaldehyde, permeabilized using 0.2 % Triton X-100 and blocked in 10 % normal Goat Serum. The cells were then incubated with the antibody overnight at 4 °C. The secondary antibody was Alexa Fluor 488-conjugated AffiniPure Goat Anti-Rabbit IgG(H+L).



#### Western Blotting

**Image 2.** Western Blot Positive WB detected in: NIH/3T3 whole cell lysate All lanes: GDF5 antibody at 2.64 µg/mL Secondary Goat polyclonal to rabbit IgG at 1/50000 dilution Predicted band size: 56 kDa Observed band size: 56 kDa



#### Immunohistochemistry

**Image 3.** Immunohistochemistry of paraffin-embedded human ovarian cancer using ABIN7154549 at dilution of 1:100

Please check the [product details page](#) for more images. Overall 5 images are available for ABIN7154549.