

Datasheet for ABIN7154569  
**anti-GSX2 antibody (AA 15-118)**[Go to Product page](#)

## 1 Image

## Overview

|                      |                                     |
|----------------------|-------------------------------------|
| Quantity:            | 100 µg                              |
| Target:              | GSX2                                |
| Binding Specificity: | AA 15-118                           |
| Reactivity:          | Human                               |
| Host:                | Rabbit                              |
| Clonality:           | Polyclonal                          |
| Conjugate:           | This GSX2 antibody is un-conjugated |
| Application:         | ELISA, Immunohistochemistry (IHC)   |

## Product Details

|                   |  |
|-------------------|--|
| Immunogen:        | Recombinant Human GS homeobox 2 protein (15-118AA) |
| Isotype:          | IgG  |
| Cross-Reactivity: | Human  |
| Purification:     | >95%, Protein G purified                           |

## Target Details

|                   |  |
|-------------------|--|
| Target:           | GSX2   |
| Alternative Name: | GSX2 ( <a href="#">GSX2 Products</a> )   |
| Background:       | Background: During telencephalic development, causes ventralization of pallial progenitors and, depending on the developmental stage, specifies different neuronal fates. At early stages, |

## Target Details

necessary and sufficient to correctly specify the ventral lateral ganglionic eminence (LGE) and its major derivatives, the striatal projection neurons. At later stages, may specify LGE progenitors toward dorsal LGE fates, including olfactory bulb interneurons (By similarity).

Transcription factor that binds 5\\\'-CNAATTAG-3\\\' DNA sequence.

Aliases: GS homeobox 2 antibody, GSX2 antibody, GSX2\_HUMAN antibody, Homeobox protein GSH 2 antibody, Homeobox protein GSH-2 antibody

UniProt: [Q9BZM3](#)

## Application Details

Application Notes: Recommended dilution: IHC:1:200-1:500,

Restrictions: For Research Use only

## Handling

Format: Liquid

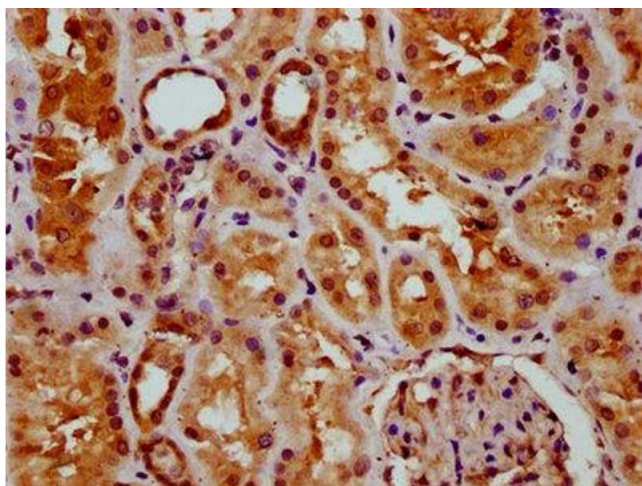
Buffer: Preservative: 0.03 % Proclin 300  
Constituents: 50 % Glycerol, 0.01M PBS, pH 7.4

Preservative: ProClin

Precaution of Use: This product contains ProClin: a POISONOUS AND HAZARDOUS SUBSTANCE which should be handled by trained staff only.

Storage: -20 °C,-80 °C

Storage Comment: Upon receipt, store at -20°C or -80°C. Avoid repeated freeze.



#### Immunohistochemistry

**Image 1.** IHC image of ABIN7154569 diluted at 1:400 and staining in paraffin-embedded human kidney tissue performed on a Leica Bond™ system. After dewaxing and hydration, antigen retrieval was mediated by high pressure in a citrate buffer (pH 6.0). Section was blocked with 10% normal goat serum 30min at RT. Then primary antibody (1% BSA) was incubated at 4°C overnight. The primary is detected by a biotinylated secondary antibody and visualized using an HRP conjugated SP system.