

Datasheet for ABIN7154588
anti-REM1 antibody (AA 2-153)[Go to Product page](#)

1 Image

Overview

Quantity:	100 µg
Target:	REM1
Binding Specificity:	AA 2-153
Reactivity:	Human
Host:	Rabbit
Clonality:	Polyclonal
Conjugate:	This REM1 antibody is un-conjugated
Application:	ELISA, Immunofluorescence (IF)

Product Details

Immunogen:	Recombinant Human GTP-binding protein REM 1 protein (2-153AA)
Isotype:	IgG
Cross-Reactivity:	Human
Purification:	>95%, Protein G purified

Target Details

Target:	REM1
Alternative Name:	REM1 (REM1 Products)
Background:	Background: Promotes endothelial cell sprouting and actin cytoskeletal reorganization. May be involved in angiogenesis. May function in Ca(2+) signaling.

Target Details

Aliases: E030011C07Rik antibody, GD:REM antibody, GES antibody, GTP binding protein REM antibody, GTP binding protein REM 1 antibody, GTP binding protein REM1 antibody, GTP-binding protein REM 1 antibody, GTPase GES antibody, GTPase regulating endothelial cell sprouting antibody, GTPase-regulating endothelial cell sprouting antibody, MGC114556 antibody, MGC48669 antibody, OTTMUSP00000016855 antibody, Rad and Gem like GTP binding protein 1 antibody, Rad and Gem-like GTP-binding protein 1 antibody, RAS (RAD and GEM) like GTP binding antibody, RAS like GTP binding antibody, RAS like GTP binding protein REM antibody, REM 1 antibody, Rem1 antibody, REM1_HUMAN antibody, RP23-35I8.9 antibody

UniProt: [O75628](#)

Application Details

Application Notes: Recommended dilution: IF:1:50-1:200,

Restrictions: For Research Use only

Handling

Format: Liquid

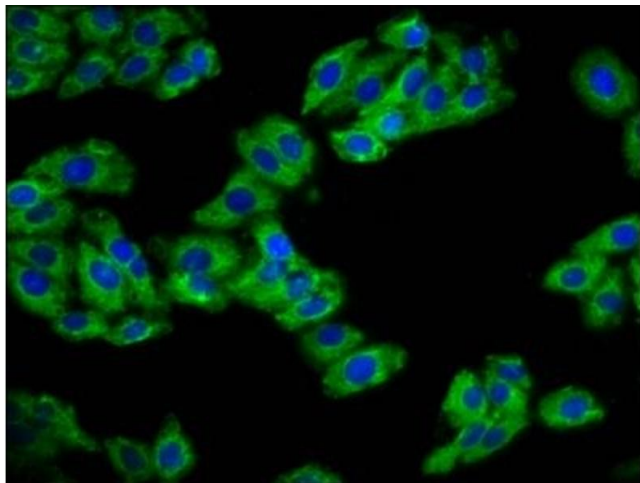
Buffer: Preservative: 0.03 % Proclin 300
Constituents: 50 % Glycerol, 0.01M PBS, pH 7.4

Preservative: ProClin

Precaution of Use: This product contains ProClin: a POISONOUS AND HAZARDOUS SUBSTANCE which should be handled by trained staff only.

Storage: -20 °C,-80 °C

Storage Comment: Upon receipt, store at -20°C or -80°C. Avoid repeated freeze.



Immunofluorescence

Image 1. Immunofluorescence staining of HepG2 cells with ABIN7154588 at 1:133, counter-stained with DAPI. The cells were fixed in 4% formaldehyde, permeabilized using 0.2% Triton X-100 and blocked in 10% normal Goat Serum. The cells were then incubated with the antibody overnight at 4°C. The secondary antibody was Alexa Fluor 488-conjugated AffiniPure Goat Anti-Rabbit IgG(H+L).