

Datasheet for ABIN7154596
anti-RIT1 antibody (AA 1-219)[Go to Product page](#)

2 Images

Overview

Quantity:	100 µg
Target:	RIT1
Binding Specificity:	AA 1-219
Reactivity:	Human
Host:	Rabbit
Clonality:	Polyclonal
Conjugate:	This RIT1 antibody is un-conjugated
Application:	ELISA, Immunohistochemistry (IHC)

Product Details

Immunogen:	Recombinant Human GTP-binding protein Rit1 protein (1-219AA)
Isotype:	IgG
Cross-Reactivity:	Human
Purification:	>95%, Protein G purified

Target Details

Target:	RIT1
Alternative Name:	RIT1 (RIT1 Products)
Background:	Background: Plays a crucial role in coupling NGF stimulation to the activation of both EPHB2 and MAPK14 signaling pathways and in NGF-dependent neuronal differentiation. Involved in

Target Details

ELK1 transactivation through the Ras-MAPK signaling cascade that mediates a wide variety of cellular functions, including cell proliferation, survival, and differentiation.

Aliases: GTP binding protein Roc1 antibody, GTP-binding protein Rit1 antibody, NS8 antibody, Ras like protein expressed in many tissues antibody, Ras like without CAAX 1 antibody, Ras-like protein expressed in many tissues antibody, Ras-like without CAAX protein 1 antibody, RIBB antibody, Ric like expressed in many tissues antibody, Ric-like protein without CAAX motif 1 antibody, RIT antibody, RIT1 antibody, RIT1_HUMAN antibody, ROC1 antibody

UniProt: [Q92963](#)

Pathways: [Neurotrophin Signaling Pathway](#)

Application Details

Application Notes: Recommended dilution: IHC:1:20-1:200,

Restrictions: For Research Use only

Handling

Format: Liquid

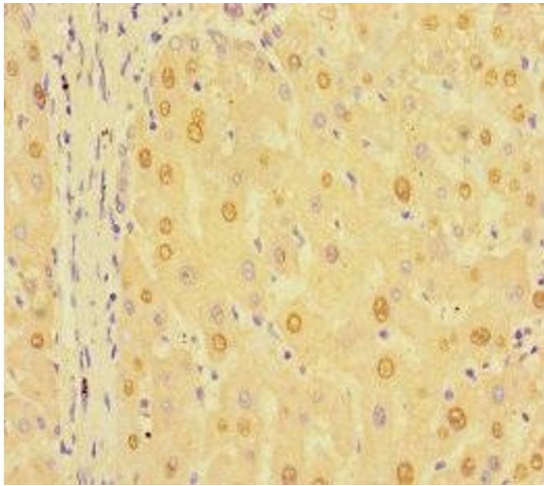
Buffer: Preservative: 0.03 % Proclin 300
Constituents: 50 % Glycerol, 0.01M PBS, PH 7.4

Preservative: ProClin

Precaution of Use: This product contains ProClin: a POISONOUS AND HAZARDOUS SUBSTANCE which should be handled by trained staff only.

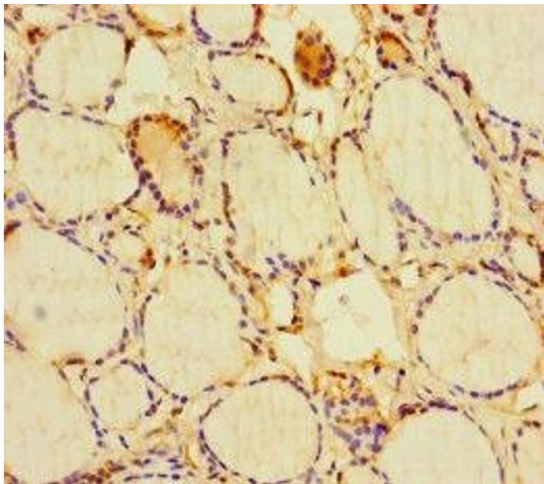
Storage: -20 °C,-80 °C

Storage Comment: Upon receipt, store at -20°C or -80°C. Avoid repeated freeze.



Immunohistochemistry

Image 1. Immunohistochemistry of paraffin-embedded human liver tissue using ABIN7154596 at dilution of 1:100



Immunohistochemistry

Image 2. Immunohistochemistry of paraffin-embedded human thyroid tissue using ABIN7154596 at dilution of 1:100