

Datasheet for ABIN7154600  
**anti-RIT2 antibody (AA 1-150)**[Go to Product page](#)

## 2 Images

## Overview

Quantity:	100 µg
Target:	RIT2
Binding Specificity:	AA 1-150
Reactivity:	Human
Host:	Rabbit
Clonality:	Polyclonal
Conjugate:	This RIT2 antibody is un-conjugated
Application:	ELISA, Immunohistochemistry (IHC), Immunofluorescence (IF)

## Product Details

Immunogen:	Recombinant Human GTP-binding protein Rit2 protein (1-150AA)
Isotype:	IgG
Cross-Reactivity:	Human
Purification:	>95%, Protein G purified

## Target Details

Target:	RIT2
Alternative Name:	RIT2 ( <a href="#">RIT2 Products</a> )
Background:	Background: Binds and exchanges GTP and GDP. Aliases: GTP binding protein Rit2 antibody, GTP binding protein Roc2 antibody, GTP-binding

## Target Details

protein Rit2 antibody, Ras like protein expressed in neurons antibody, Ras like without CAAX 2 antibody, Ras like without CAAX protein 2 antibody, Ras-like protein expressed in neurons antibody, Ras-like without CAAX protein 2 antibody, RIBA antibody, Ric (Drosophila) like antibody, Ric like antibody, Ric like, expressed in neurons antibody, RIN antibody, RIT2 antibody, RIT2\_HUMAN antibody, ROC2 antibody

UniProt: [Q99578](#)

Pathways: [Neurotrophin Signaling Pathway](#)

## Application Details

Application Notes: Recommended dilution: IHC:1:20-1:200, IF:1:50-1:200,

Restrictions: For Research Use only

## Handling

Format: Liquid

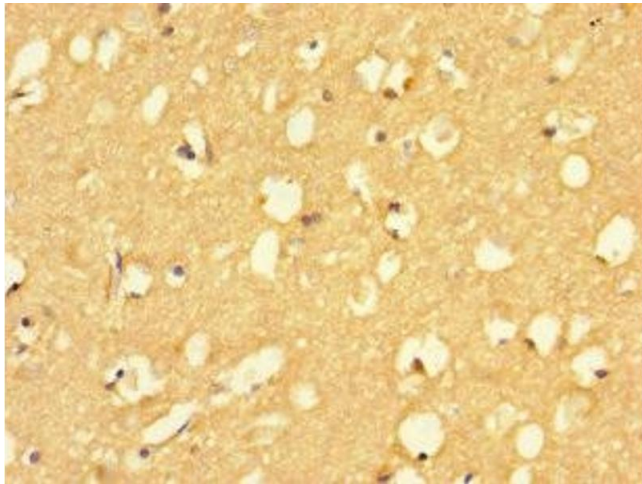
Buffer: Preservative: 0.03 % Proclin 300  
Constituents: 50 % Glycerol, 0.01M PBS, PH 7.4

Preservative: ProClin

Precaution of Use: This product contains ProClin: a POISONOUS AND HAZARDOUS SUBSTANCE which should be handled by trained staff only.

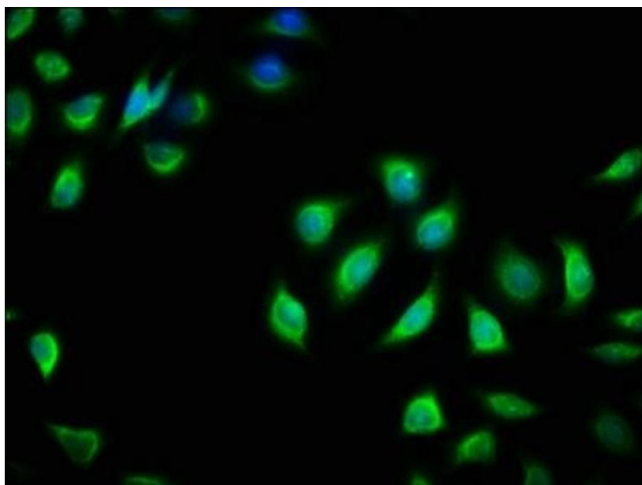
Storage: -20 °C,-80 °C

Storage Comment: Upon receipt, store at -20°C or -80°C. Avoid repeated freeze.



#### Immunohistochemistry

**Image 1.** Immunohistochemistry of paraffin-embedded human brain tissue using ABIN7154600 at dilution of 1:100



#### Immunofluorescence

**Image 2.** Immunofluorescence staining of A549 cells with ABIN7154600 at 1:166, counter-stained with DAPI. The cells were fixed in 4% formaldehyde, permeabilized using 0.2% Triton X-100 and blocked in 10% normal Goat Serum. The cells were then incubated with the antibody overnight at 4°C. The secondary antibody was Alexa Fluor 488-conjugated AffiniPure Goat Anti-Rabbit IgG(H+L).