



[Go to Product page](#)

Datasheet for ABIN7154609
anti-ERAL1 antibody (AA 271-382)

3 Images

Overview

Quantity:	100 µg
Target:	ERAL1
Binding Specificity:	AA 271-382
Reactivity:	Human
Host:	Rabbit
Clonality:	Polyclonal
Conjugate:	This ERAL1 antibody is un-conjugated
Application:	ELISA, Immunohistochemistry (IHC), Immunofluorescence (IF)

Product Details

Immunogen:	Recombinant Human GTPase Era, mitochondrial protein (271-382AA)
Isotype:	IgG
Cross-Reactivity:	Human
Purification:	>95%, Protein G purified

Target Details

Target:	ERAL1
Alternative Name:	ERAL1 (ERAL1 Products)
Background:	Background: Probable GTPase that plays a role in the mitochondrial ribosomal small subunit assembly. Specifically binds the 12S mitochondrial rRNA (12S mt-rRNA) to a 33 nucleotide

Target Details

section delineating the 3' terminal stem-loop region. May act as a chaperone that protects the 12S mt-rRNA on the 28S mitoribosomal subunit during ribosomal small subunit assembly. Aliases: CEGA antibody, Conserved ERA like GTPase antibody, Conserved ERA-like GTPase antibody, ERA antibody, Era (E. coli G protein homolog) like 1 antibody, Era G protein like 1 (E. coli) antibody, Era G protein like 1 antibody, ERA W antibody, ERA-like protein 1 antibody, ERA-W antibody, Eral1 antibody, ERAL1_HUMAN antibody, ERAL1A antibody, ERAW antibody, GTP binding protein era homolog antibody, GTPase Era antibody, GTPase Era, mitochondrial antibody, GTPase human homolog of E. coli essential cell cycle protein Era antibody, H-ERA antibody, HERA A antibody, hERA antibody, HERA B antibody, HERAA antibody, HERAB antibody, mitochondrial antibody

UniProt: [O75616](#)

Pathways: [Ribonucleoprotein Complex Subunit Organization](#), [Ribosome Assembly](#)

Application Details

Application Notes: Recommended dilution: IHC:1:20-1:200, IF:1:50-1:200,

Restrictions: For Research Use only

Handling

Format: Liquid

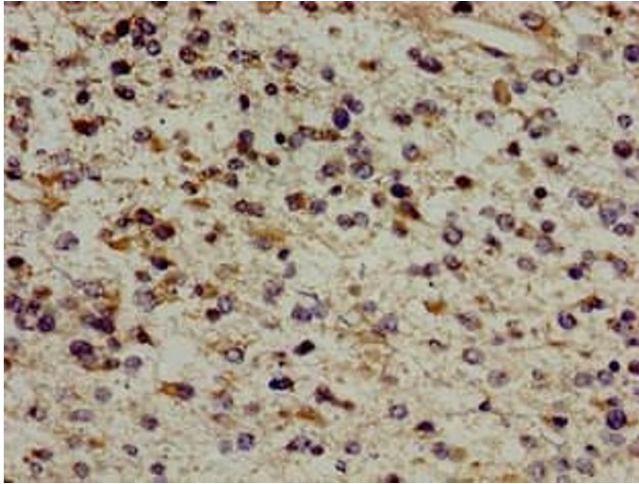
Buffer: Preservative: 0.03 % Proclin 300
Constituents: 50 % Glycerol, 0.01M PBS, PH 7.4

Preservative: ProClin

Precaution of Use: This product contains ProClin: a POISONOUS AND HAZARDOUS SUBSTANCE which should be handled by trained staff only.

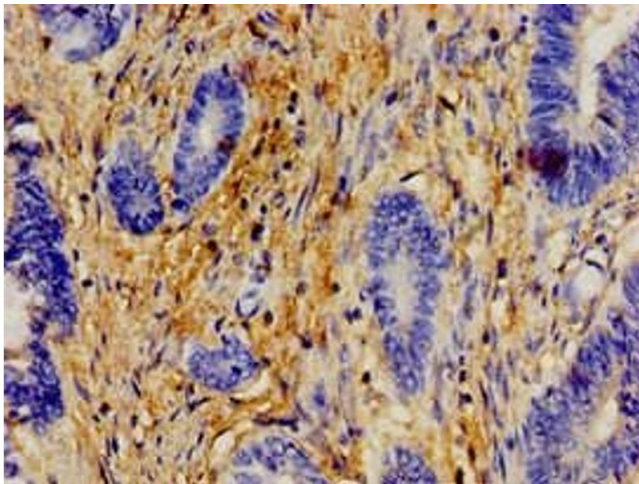
Storage: -20 °C,-80 °C

Storage Comment: Upon receipt, store at -20°C or -80°C. Avoid repeated freeze.



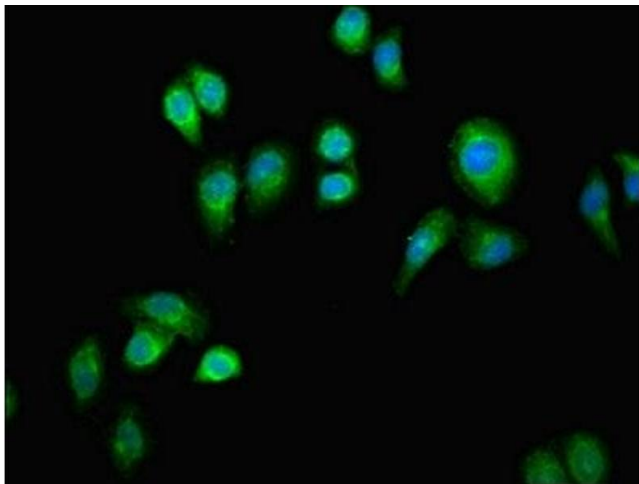
Immunohistochemistry

Image 1. Immunohistochemistry of paraffin-embedded human glioma using ABIN7154609 at dilution of 1:100



Immunohistochemistry

Image 2. Immunohistochemistry of paraffin-embedded human colon cancer using ABIN7154609 at dilution of 1:100



Immunofluorescence

Image 3. Immunofluorescent analysis of A549 cells using ABIN7154609 at dilution of 1:100 and Alexa Fluor 488-conjugated AffiniPure Goat Anti-Rabbit IgG(H+L)