

Datasheet for ABIN7154621
anti-GIMAP4 antibody (AA 5-101)[Go to Product page](#)

1 Image

Overview

Quantity:	100 µL
Target:	GIMAP4
Binding Specificity:	AA 5-101
Reactivity:	Human
Host:	Rabbit
Clonality:	Polyclonal
Conjugate:	This GIMAP4 antibody is un-conjugated
Application:	ELISA, Immunofluorescence (IF)

Product Details

Immunogen:	Recombinant Human GTPase IMAP family member 4 protein (5-101AA)
Isotype:	IgG
Cross-Reactivity:	Human
Purification:	>95%, Protein G purified

Target Details

Target:	GIMAP4
Alternative Name:	GIMAP4 (GIMAP4 Products)
Background:	Background: May play a role in regulating lymphocyte apoptosis (By similarity). Exhibits intrinsic GTPase activity. Shows a higher affinity for GDP over GTP (about 12-fold higher), and

Target Details

binding shows an absolute requirement for magnesium.

Aliases: FLJ11110 antibody, GIMA4_HUMAN antibody, Gimap4 antibody, GTPase IMAP family member 4 antibody, GTPase IMAP family member 4 antibody, hIAN1 antibody, HIMAP4 antibody, Human immune associated nucleotide 1 antibody, IAN-1 antibody, IAN1 antibody, IMAP4 antibody, Immunity associated nucleotide 1 protein antibody, Immunity associated protein 4 antibody, Immunity-associated nucleotide 1 protein antibody, Immunity-associated protein 4 antibody, MSTP062 antibody

UniProt: [Q9NUV9](#)

Application Details

Application Notes: Recommended dilution: IF:1:50-1:200,

Restrictions: For Research Use only

Handling

Format: Liquid

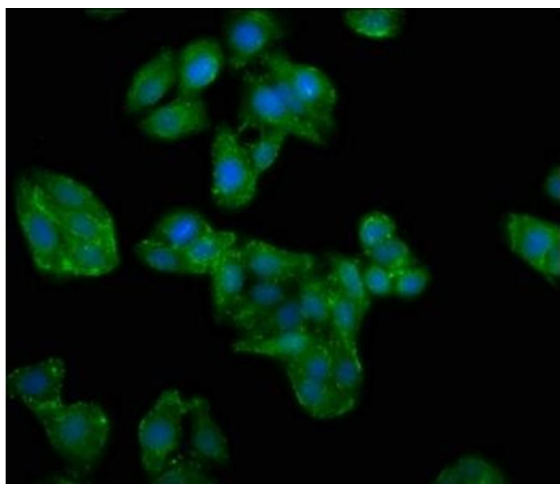
Buffer: Preservative: 0.03 % Proclin 300
Constituents: 50 % Glycerol, 0.01M PBS, pH 7.4

Preservative: ProClin

Precaution of Use: This product contains ProClin: a POISONOUS AND HAZARDOUS SUBSTANCE which should be handled by trained staff only.

Storage: -20 °C, -80 °C

Storage Comment: Upon receipt, store at -20°C or -80°C. Avoid repeated freeze.



Immunofluorescence

Image 1. Immunofluorescence staining of HepG2 cells with ABIN7154621 at 1:100, counter-stained with DAPI. The cells were fixed in 4% formaldehyde, permeabilized using 0.2% Triton X-100 and blocked in 10% normal Goat Serum. The cells were then incubated with the antibody overnight at 4°C. The secondary antibody was Alexa Fluor 488-conjugated AffiniPure Goat Anti-Rabbit IgG(H+L).