

Datasheet for ABIN7154731  
**anti-GNA12 antibody (AA 112-270)**[Go to Product page](#)

## 4 Images

## Overview

Quantity:	100 µg
Target:	GNA12
Binding Specificity:	AA 112-270
Reactivity:	Human
Host:	Rabbit
Clonality:	Polyclonal
Conjugate:	This GNA12 antibody is un-conjugated
Application:	Western Blotting (WB), ELISA, Immunohistochemistry (IHC), Immunofluorescence (IF)

## Product Details

Immunogen:	Recombinant Human Guanine nucleotide-binding protein subunit alpha-12 protein (112-270AA)
Isotype:	IgG
Cross-Reactivity:	Human
Purification:	>95%, Protein G purified

## Target Details

Target:	GNA12
Alternative Name:	GNA12 ( <a href="#">GNA12 Products</a> )
Background:	Background: Guanine nucleotide-binding proteins (G proteins) are involved as modulators or transducers in various transmembrane signaling systems (PubMed:22609986,

## Target Details

PubMed:15525651, PubMed:15240885, PubMed:17565996, PubMed:12515866, PubMed:16787920, PubMed:16705036, PubMed:23762476, PubMed:27084452). Activates effector molecule RhoA by binding and activating RhoGEFs (ARHGEF12/LARG) (PubMed:15240885, PubMed:12515866, PubMed:16202387). GNA12-dependent Rho signaling subsequently regulates transcription factor AP-1 (activating protein-1) (By similarity). GNA12-dependent Rho signaling also regulates protein phosphatase 2A activation causing dephosphorylation of its target proteins (PubMed:15525651, PubMed:17565996). Promotes tumor cell invasion and metastasis by activating RhoA/ROCK signaling pathway and up-regulating proinflammatory cytokine production (PubMed:23762476, PubMed:16787920, PubMed:16705036, PubMed:27084452). Inhibits CDH1-mediated cell adhesion in process independent from Rho activation (PubMed:11976333, PubMed:16787920). Together with NAPA promotes CDH5 localization to plasma membrane (PubMed:15980433). May play a role in the control of cell migration through the TOR signaling cascade (PubMed:22609986).

Aliases: G alpha 12 antibody, G alpha-12 antibody, G-protein subunit alpha-12 antibody, gep antibody, Gna12 antibody, GNA12\_HUMAN antibody, guanine nucleotide binding protein (G protein) alpha 12 antibody, Guanine nucleotide binding protein alpha 12 subunit antibody, Guanine nucleotide-binding protein subunit alpha-12 antibody, MGC104623 antibody, MGC99644 antibody, NNX3 antibody, RMP antibody, WUGSC:H\_GS165014.2 antibody

UniProt: [Q03113](#)

## Application Details

Application Notes: Recommended dilution: WB:1:500-1:5000, IHC:1:200-1:500, IF:1:50-1:200,

Restrictions: For Research Use only

## Handling

Format: Liquid

Buffer: Preservative: 0.03 % Proclin 300  
Constituents: 50 % Glycerol, 0.01M PBS, pH 7.4

Preservative: ProClin

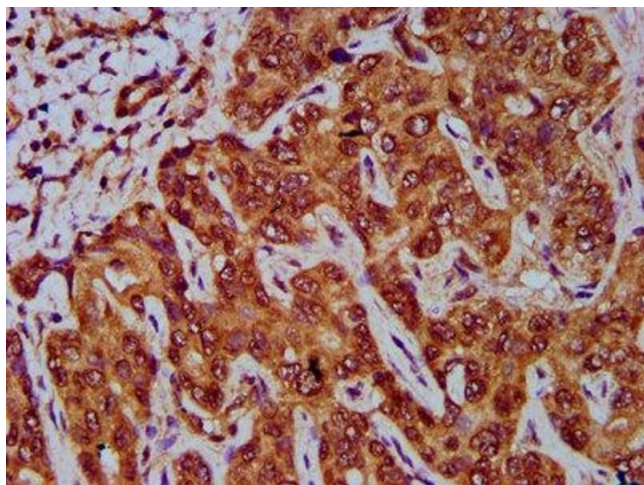
Precaution of Use: This product contains ProClin: a POISONOUS AND HAZARDOUS SUBSTANCE which should be handled by trained staff only.

Storage: -20 °C,-80 °C

## Handling

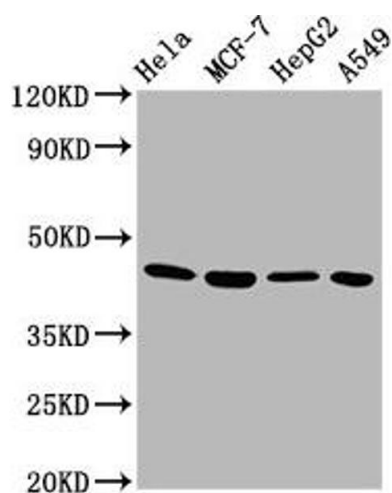
Storage Comment: Upon receipt, store at -20°C or -80°C. Avoid repeated freeze.

## Images



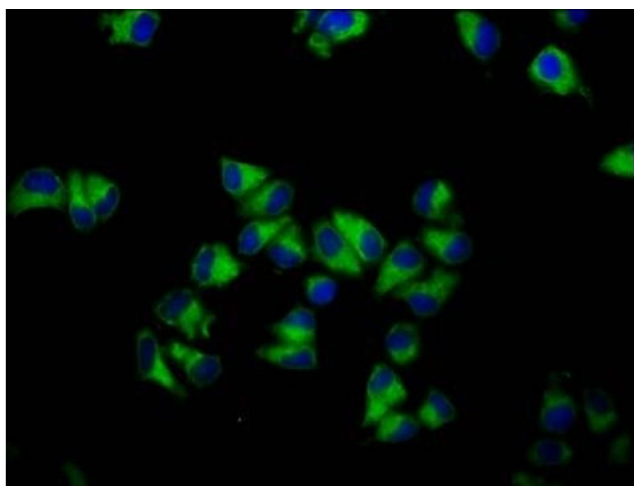
### Immunohistochemistry

**Image 1.** IHC image of ABIN7154731 diluted at 1:400 and staining in paraffin-embedded human liver cancer performed on a Leica Bond™ system. After dewaxing and hydration, antigen retrieval was mediated by high pressure in a citrate buffer (pH 6.0). Section was blocked with 10% normal goat serum 30min at RT. Then primary antibody (1% BSA) was incubated at 4°C overnight. The primary is detected by a biotinylated secondary antibody and visualized using an HRP conjugated SP system.



### Western Blotting

**Image 2.** Western Blot Positive WB detected in: HeLa whole cell lysate, MCF-7 whole cell lysate, HepG2 whole cell lysate, A549 whole cell lysate. All lanes: GNA12 antibody at 5.8 µg/mL. Secondary Goat polyclonal to rabbit IgG at 1/50000 dilution. Predicted band size: 45, 38, 35 kDa. Observed band size: 45 kDa.



### Immunofluorescence

**Image 3.** Immunofluorescence staining of HeLa cells with ABIN7154731 at 1:133, counter-stained with DAPI. The cells were fixed in 4% formaldehyde, permeabilized using 0.2% Triton X-100 and blocked in 10% normal Goat Serum. The cells were then incubated with the antibody overnight at 4°C. The secondary antibody was Alexa Fluor 488-conjugated AffiniPure Goat Anti-Rabbit IgG(H+L).

Please check the [product details page](#) for more images. Overall 4 images are available for ABIN7154731.