



[Go to Product page](#)

Datasheet for ABIN7154749  
**anti-GNB1L antibody (AA 1-327)**

1 Image

### Overview

Quantity:	100 µL
Target:	GNB1L
Binding Specificity:	AA 1-327
Reactivity:	Human
Host:	Rabbit
Clonality:	Polyclonal
Conjugate:	This GNB1L antibody is un-conjugated
Application:	Western Blotting (WB), ELISA

### Product Details

Immunogen:	Recombinant Human Guanine nucleotide-binding protein subunit beta-like protein 1 protein (1-327AA)
Isotype:	IgG
Cross-Reactivity:	Human
Purification:	Antigen Affinity Purified

### Target Details

Target:	GNB1L
Alternative Name:	GNB1L ( <a href="#">GNB1L Products</a> )
Background:	Background: cytoplasmic side of plasma membrane, G-protein coupled receptor signaling

## Target Details

---

pathway, intracellular signal transduction

Aliases: DGCRK3 antibody, ESTM55 antibody, fb98e06 antibody, fj09d12 antibody, FKSG1 antibody, G protein subunit beta-like protein 1 antibody, G-protein beta subunit-like protein antibody, GNB1L antibody, GNB1L\_HUMAN antibody, guanine nucleotide binding protein (G protein), beta polypeptide 1-like antibody, guanine nucleotide binding protein beta-subunit-like polypeptide antibody, Guanine nucleotide-binding protein subunit beta-like protein 1 antibody, GY2 antibody, KIAA1645 antibody, WD repeat-containing protein 14 antibody, WD40 repeat-containing protein deleted in VCFS antibody, WDR14 antibody, WDVCF antibody, wu:fb98e06 antibody, wu:fj09d12 antibody, zgc:55774 antibody

---

UniProt: [Q9BYB4](#)

## Application Details

---

Application Notes: Recommended dilution: WB:1:1000-1:5000,

Restrictions: For Research Use only

## Handling

---

Format: Liquid

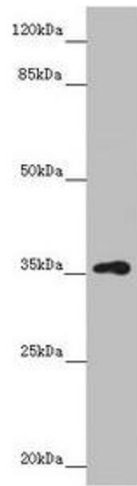
Buffer: PBS with 0.02 % sodium azide, 50 % glycerol, pH 7.3.

Preservative: Sodium azide

Precaution of Use: This product contains Sodium azide: a POISONOUS AND HAZARDOUS SUBSTANCE which should be handled by trained staff only.

Storage: -20 °C,-80 °C

Storage Comment: Upon receipt, store at -20°C or -80°C. Avoid repeated freeze.



### Western Blotting

**Image 1.** Western blot All lanes: GNB1L antibody at 3.37  $\mu$ g/mL + A549 whole cell lysate Secondary Goat polyclonal to rabbit IgG at 1/10000 dilution Predicted band size: 36, 23 kDa Observed band size: 36 kDa