



[Go to Product page](#)

Datasheet for ABIN7154750
anti-GNB1L antibody (AA 1-327)

3 Images

Overview

Quantity:	100 µL
Target:	GNB1L
Binding Specificity:	AA 1-327
Reactivity:	Human
Host:	Rabbit
Clonality:	Polyclonal
Conjugate:	This GNB1L antibody is un-conjugated
Application:	Western Blotting (WB), Immunohistochemistry (IHC), ELISA

Product Details

Immunogen:	Recombinant Human Guanine nucleotide-binding protein subunit beta-like protein 1 protein (1-327AA)
Isotype:	IgG
Cross-Reactivity:	Human, Mouse
Purification:	Antigen Affinity Purified

Target Details

Target:	GNB1L
Alternative Name:	GNB1L (GNB1L Products)
Background:	Background: cytoplasmic side of plasma membrane, G-protein coupled receptor signaling

Target Details

pathway, intracellular signal transduction

Aliases: DGCRK3 antibody, ESTM55 antibody, fb98e06 antibody, fj09d12 antibody, FKSG1 antibody, G protein subunit beta-like protein 1 antibody, G-protein beta subunit-like protein antibody, GNB1L antibody, GNB1L_HUMAN antibody, guanine nucleotide binding protein (G protein), beta polypeptide 1-like antibody, guanine nucleotide binding protein beta-subunit-like polypeptide antibody, Guanine nucleotide-binding protein subunit beta-like protein 1 antibody, GY2 antibody, KIAA1645 antibody, WD repeat-containing protein 14 antibody, WD40 repeat-containing protein deleted in VCFS antibody, WDR14 antibody, WDVCF antibody, wu:fb98e06 antibody, wu:fj09d12 antibody, zgc:55774 antibody

UniProt: [Q9BYB4](#)

Application Details

Application Notes: Recommended dilution: WB:1:1000-1:5000, IHC:1:20-1:200,

Restrictions: For Research Use only

Handling

Format: Liquid

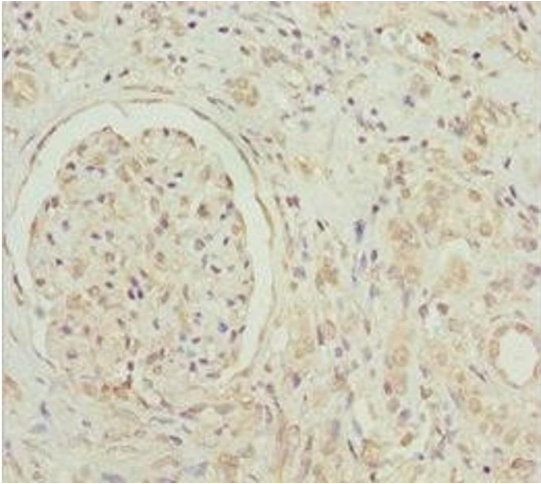
Buffer: PBS with 0.02 % sodium azide, 50 % glycerol, pH 7.3.

Preservative: Sodium azide

Precaution of Use: This product contains Sodium azide: a POISONOUS AND HAZARDOUS SUBSTANCE which should be handled by trained staff only.

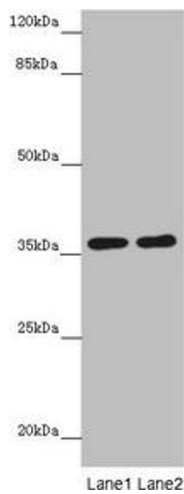
Storage: -20 °C,-80 °C

Storage Comment: Upon receipt, store at -20°C or -80°C. Avoid repeated freeze.



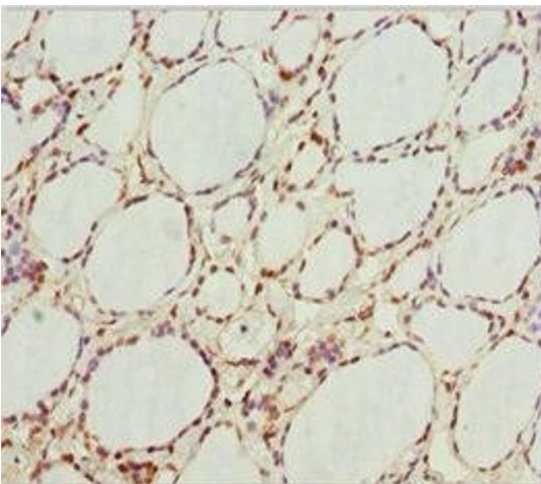
Immunohistochemistry

Image 1. Immunohistochemistry of paraffin-embedded human kidney tissue using ABIN7154750 at dilution of 1:100



Western Blotting

Image 2. Western blot All lanes: GNB1L antibody at 3.69 μ g/mL Lane 1: Mouse brain tissue Lane 2: Jurkat whole cell lysate Secondary Goat polyclonal to rabbit IgG at 1/10000 dilution Predicted band size: 36, 23 kDa Observed band size: 36 kDa



Immunohistochemistry

Image 3. Immunohistochemistry of paraffin-embedded human thyroid tissue using ABIN7154750 at dilution of 1:100